

Tallapoosa County Profile

Alabama Department of Workforce
Labor Market Information Division

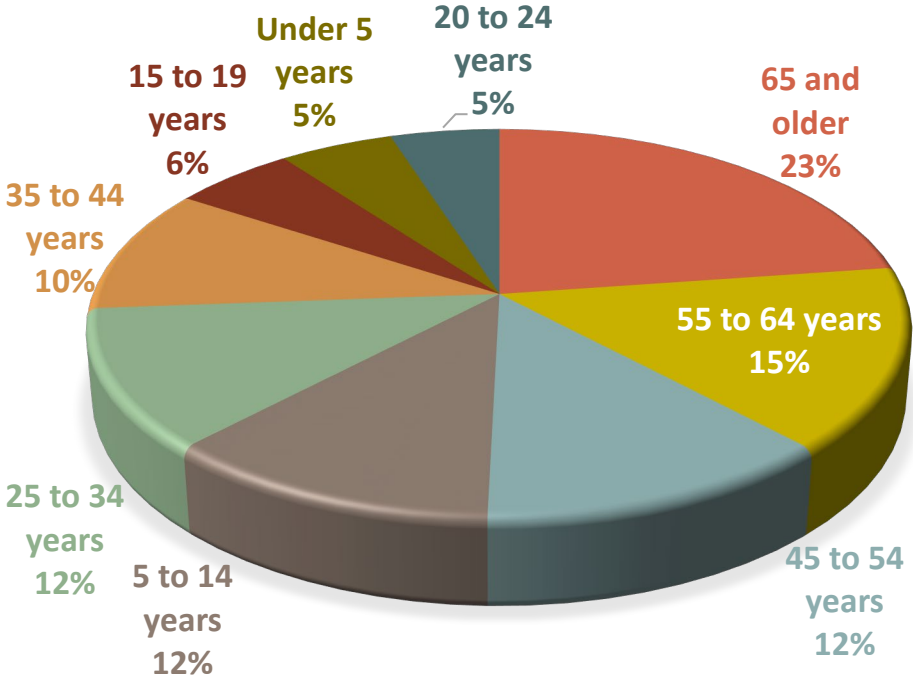
Demographics

American Community Survey Average Population Estimates for 2019-2023

Age	Estimate
Under 5 years	2,140
5 to 14 years	4,825
15 to 19 years	2,303
20 to 24 years	2,045
25 to 34 years	4,791
35 to 44 years	4,266
45 to 54 years	5,100
55 to 64 years	6,258
65 and older	9,342

Total Population
41,070

Population By Age Group:



Source: U.S. Census Bureau, 2019-2023 5-Year American Community Survey Table DP05: Demographic and Housing Estimates

Demographics

American Community Survey Average Population Estimates for 2019-2023

School Enrollment	Estimate
Population 3 years and over enrolled in school	7,937
Nursery school, preschool	575
Kindergarten	558
Elementary school (grades 1-8)	3,495
High school (grades 9-12)	2,009
College or graduate school	1,300
Educational Attainment	Estimate
Population 25 years and over	29,757
Less than 9 th grade	1,357
9 th to 12 th grade, no diploma	3,461
High school graduate (includes equivalency)	9,741
Some college, no degree	6,916
Associate's degree	2,710
Bachelor's degree	3,560
Graduate or professional degree	2,012

Unemployment Data

November 2024 Unemployment & Underemployment Data

County	Civilian Labor Force	Employment	Unemployment	Unemployment Rate	Under-Employment	Available Labor Pool
Bullock	4,658	4,471	187	3.6%	1,453	1,640
Chambers	17,192	16,657	535	3.0%	4,214	4,749
Coosa	4,584	4,404	180	4.0%	951	1,131
Lee	84,247	81,616	2,631	2.8%	16,976	19,607
Macon	7,893	7,526	367	4.1%	2,152	2,519
Russell	24,152	23,230	922	3.6%	5,343	6,265
Tallapoosa	17,779	17,174	605	3.3%	3,040	3,645

Unemployment + Underemployment = Potential Available Labor Pool

Source: LAUS data, County Unemployment Rates, Unemployment Data for Labor Force, Employment, Unemployment, and Unemployment Rate Data. Underemployment in Alabama WIA Areas, Published September 2023, CBER @ UA, Underemployment and Available Labor Pool Data.

Unemployment Data

Initial Claims by Occupation 2024, Annual

Occupation	Number Unemployed	Occupation	Number Unemployed
Team Assemblers	27	Cooks and Food Preparation Workers	9
Management Occupations	23	Food Service Managers	9
Industrial Truck and Tractor Operators	22	Maintenance and Repair Workers, General	9
Production Workers, All Other	20	Heavy and Tractor-Trailer Truck Drivers	8
General and Operations Managers	18	Inspectors, Testers, Sorters, Samplers, and Weighers	8
Nursing Assistants	17	Janitors and Cleaners, Except Maids and Housekeeping Cleaners	8
Assemblers and Fabricators	16	Registered Nurses	8
Cashiers	16	Retail Salespersons	8
Production Occupations	16	Cooks, Fast Food	7
Customer Service Representatives	14	Receptionists and Information Clerks	7
Stockers and Order Fillers	14	Construction Laborers	6
Helpers--Production Workers	13	Industrial Production Managers	6
Laborers and Freight, Stock, and Material Movers, Hand	13	Packaging and Filling Machine Operators and Tenders	6
Office Clerks, General	12	Pharmacy Technicians	6
Fast Food and Counter Workers	11	Retail Sales Workers	6



Help Wanted OnLine[®] Annual Job Postings

2024 Top Occupations with Most Ads Posted

Occupation	# of Ads	Occupation	# of Ads
Registered Nurses	130	Health Technologists and Technicians, All Other	23
Retail Salespersons	78	Supervisors of Food Preparation and Serving Workers	23
Supervisors of Retail Sales Workers	75	Supervisors of Office and Admin Support Workers	23
Customer Service Representatives	53	Nursing Assistants	22
Food Service Managers	52	Cooks, Restaurant	22
Merchandise Displayers and Window Trimmers	45	General and Operations Managers	21
Fast Food and Counter Workers	39	Pharmacy Technicians	20
Licensed Practical & Vocational Nurses	36	Stockers and Order Fillers	19
Personal Care Aides	36	Medical Assistants	18
Heavy and Tractor-Trailer Truck Drivers	33	Security Guards	18
Maintenance and Repair Workers, General	27	Computer User Support Specialists	17
Cashiers	25	Waiters and Waitresses	16
Secretaries and Administrative Assistants, Except Legal, Medical, and Executive	25	Shipping, Receiving, and Inventory Clerks	16
Laborers and Freight, Stock, and Material Movers, Hand	25	Maids and Housekeeping Cleaners	15
Medical and Health Services Managers	23	Inspectors, Testers, Sorters, Samplers, and Weighers	15



Expected Worker Shortfall

	2022-2032	2022-2040	2022-2045
Total Population Growth	-3.7%	-8.1%	-11.3%
Age 20-64 Population Growth	-9.8%	-15.7%	-18.7%
Nonagricultural Job Growth	7.9%	14.4%	18.2%
Worker Shortfall	17.6%	30.1%	36.8%
Worker Shortfall	2,405	4,109	5,026

Note: A negative Worker Shortfall indicates a projected surplus of workers versus available jobs.



Occupational Wages

Tallapoosa County Average Hourly Wage All Occupations

Entry	Median	Mean	Experienced
\$11.74	\$17.96	\$21.94	\$27.05

Tallapoosa County Average Hourly Wage Manufacturing

Entry	Median	Mean	Experienced
\$12.82	\$18.26	\$21.80	\$26.29

Source: Alabama Department of Workforce, Labor Market Information Division in cooperation with the U.S. Bureau of Labor Statistics. The data is based on the 2024 release of the Occupational Employment Statistics report, employment and wage estimate file. Wage data has been aged using the latest quarterly Employment Cost Index (ECI) factors. 'NA' indicates data not available for publication.

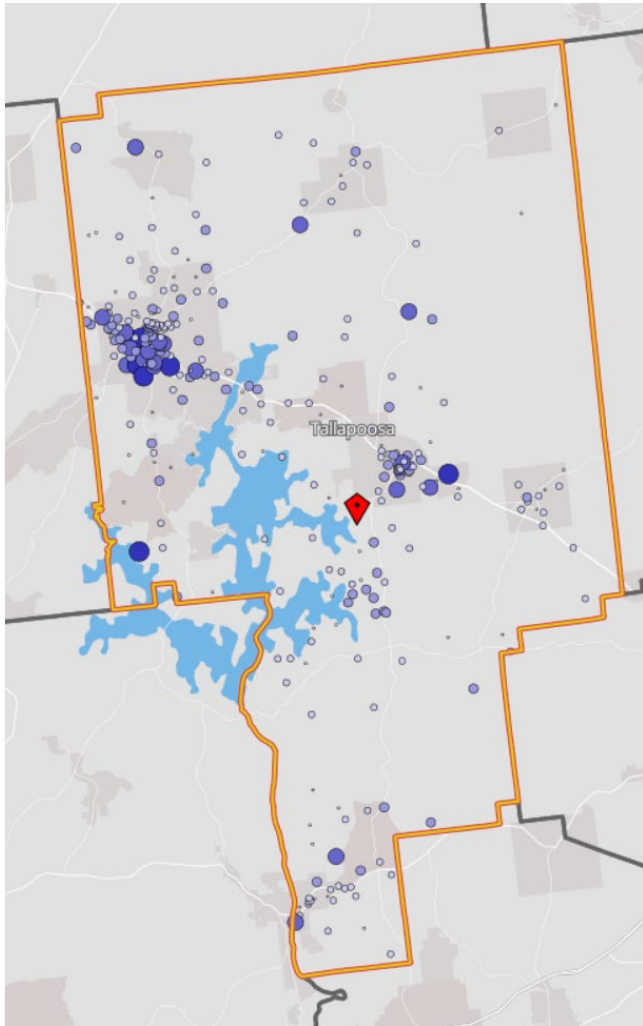
Occupational Wages

Annual Salary Area Comparison

	Entry	Median	Mean	Experienced
Alabama				
Total	\$27,814	\$45,371	\$57,292	\$72,030
Manufacturing	\$33,704	\$48,848	\$58,571	\$71,005
Tallapoosa County				
Total	\$24,408	\$37,358	\$45,644	\$56,264
Manufacturing	\$26,663	\$37,980	\$45,351	\$54,695
Lee County				
Total	\$25,355	\$38,951	\$51,322	\$64,306
Manufacturing	\$32,946	\$44,990	\$54,642	\$65,490
Montgomery County				
Total	\$28,231	\$45,709	\$57,183	\$71,660
Manufacturing	\$34,264	\$49,042	\$55,710	\$66,432

Source: Alabama Department of Workforce, Labor Market Information Division in cooperation with the U.S. Bureau of Labor Statistics. The data is based on the 2024 release of the Occupational Employment Statistics report, employment and wage estimate file. Wage data has been aged using the latest quarterly Employment Cost Index (ECI) factors. 'NA' indicates data not available for publication.

2022 Workforce Characteristics

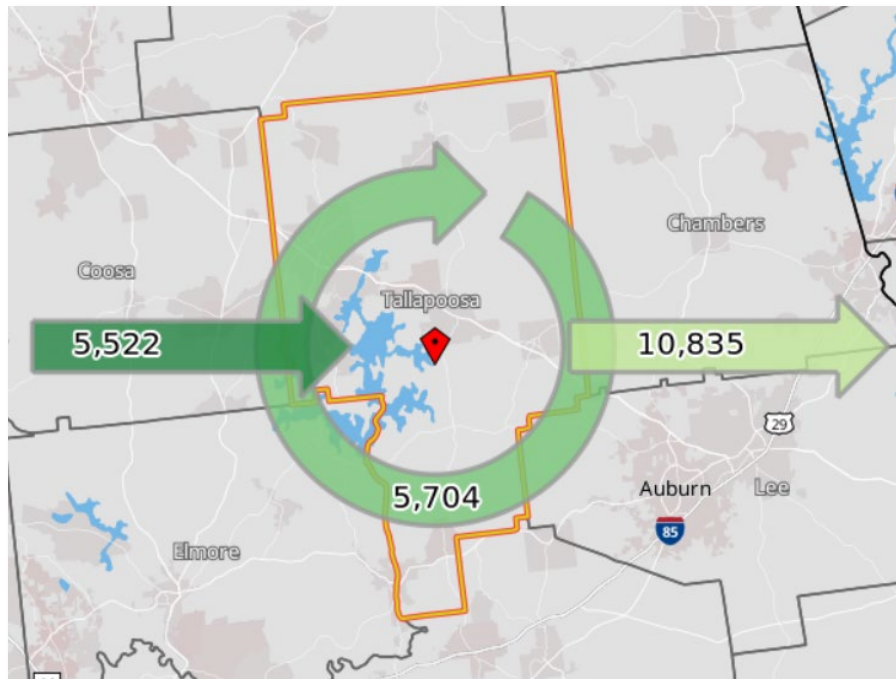


Jobs by Worker Age	Count	Share
Age 29 or younger	2,639	23.5%
Age 30 to 54	5,714	50.9%
Age 55 or older	2,873	25.6%
Jobs by Worker Educational Attainment	Count	Share
Less than high school	1,303	11.6%
High school or equivalent, no college	2,845	25.3%
Some college or Associate degree	2,732	24.3%
Bachelor's degree or advanced degree	1,707	15.2%
Educational attainment not available (workers aged 29 or younger)	2,639	23.5%
Jobs by Worker Sex	Count	Share
Male	5,427	48.3%
Female	5,799	51.7%
Jobs by Earnings	Count	Share
\$1,250 per month or less	2,245	20.0%
\$1,251 to \$3,333 per month	4,394	39.1%
More than \$3,333 per month	4,587	40.9%

Source: U.S. Census Bureau, OnTheMap Application and LEHD Origin-Destination Employment Statistics in Partnership with the Alabama Department of Workforce, Labor Market Information Division.

2022 Commuting Patterns

Labor Force Characteristics



Outflow Job Characteristics	Count	Share
External Jobs Filled by Residents	10,835	100.0%
Workers Aged 29 or younger	2,627	24.2%
Workers Aged 30 to 54	5,555	51.3%
Workers Aged 55 or older	2,653	24.5%
Workers Earning \$1,250 per month or less	1,888	17.4%
Workers Earning \$1,251 to \$3,333 per month	3,398	31.4%
Workers Earning More than \$3,333 per month	5,549	51.2%
Workers in the "Goods Producing" Industry Class	2,290	21.1%
Workers in the "Trade, Transportation, and Utilities" Industry Class	2,647	24.4%
Workers in the "All Other Services" Industry Class	5,898	54.4%

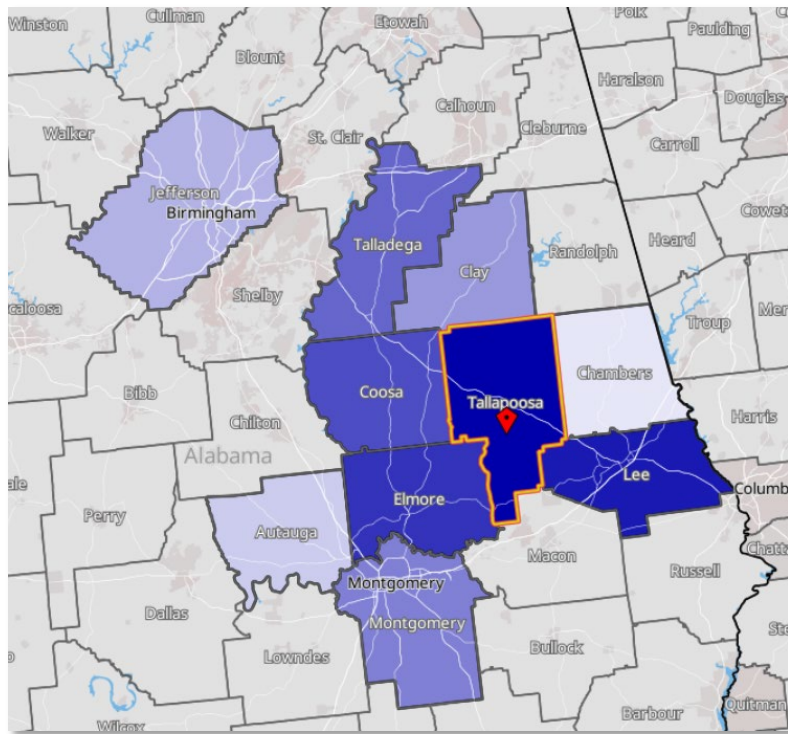
Live in the County but Work Elsewhere
49.1%

Live and Work in the County
25.9%

Live Elsewhere but Work in the County
25.0%

2022 Commuting Patterns

Where People Live who Work in This County



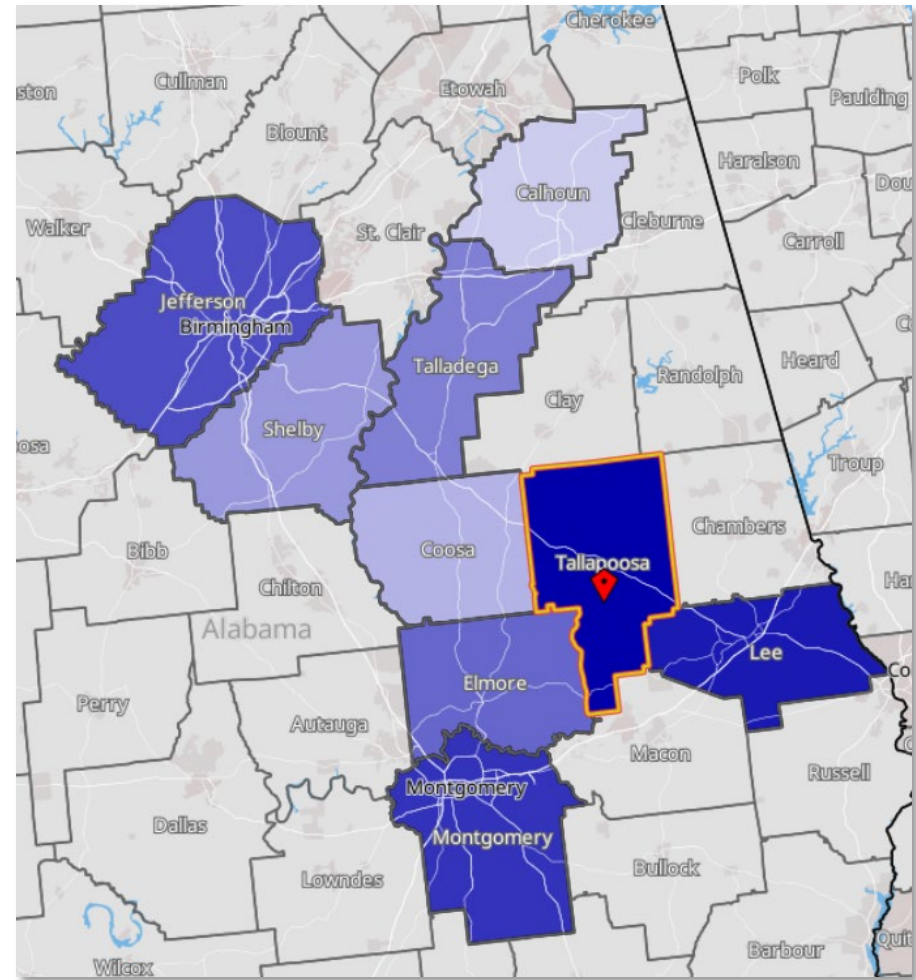
	Count	Share
Tallapoosa County, AL	5,704	50.8%
Lee County, AL	688	6.1%
Elmore County, AL	541	4.8%
Coosa County, AL	527	4.7%
Talladega County, AL	464	4.1%
Montgomery County, AL	307	2.7%
Clay County, AL	225	2.0%
Jefferson County, AL	209	1.9%
Autauga County, AL	182	1.6%
Chambers County, AL	172	1.5%
All Other Locations	2,207	19.7%

Source: U.S. Census Bureau, OnTheMap Application and LEHD Origin-Destination Employment Statistics in Partnership with the Alabama Department of Workforce, Labor Market Information Division.

2022 Commuting Patterns

Where People Work who Live in This County

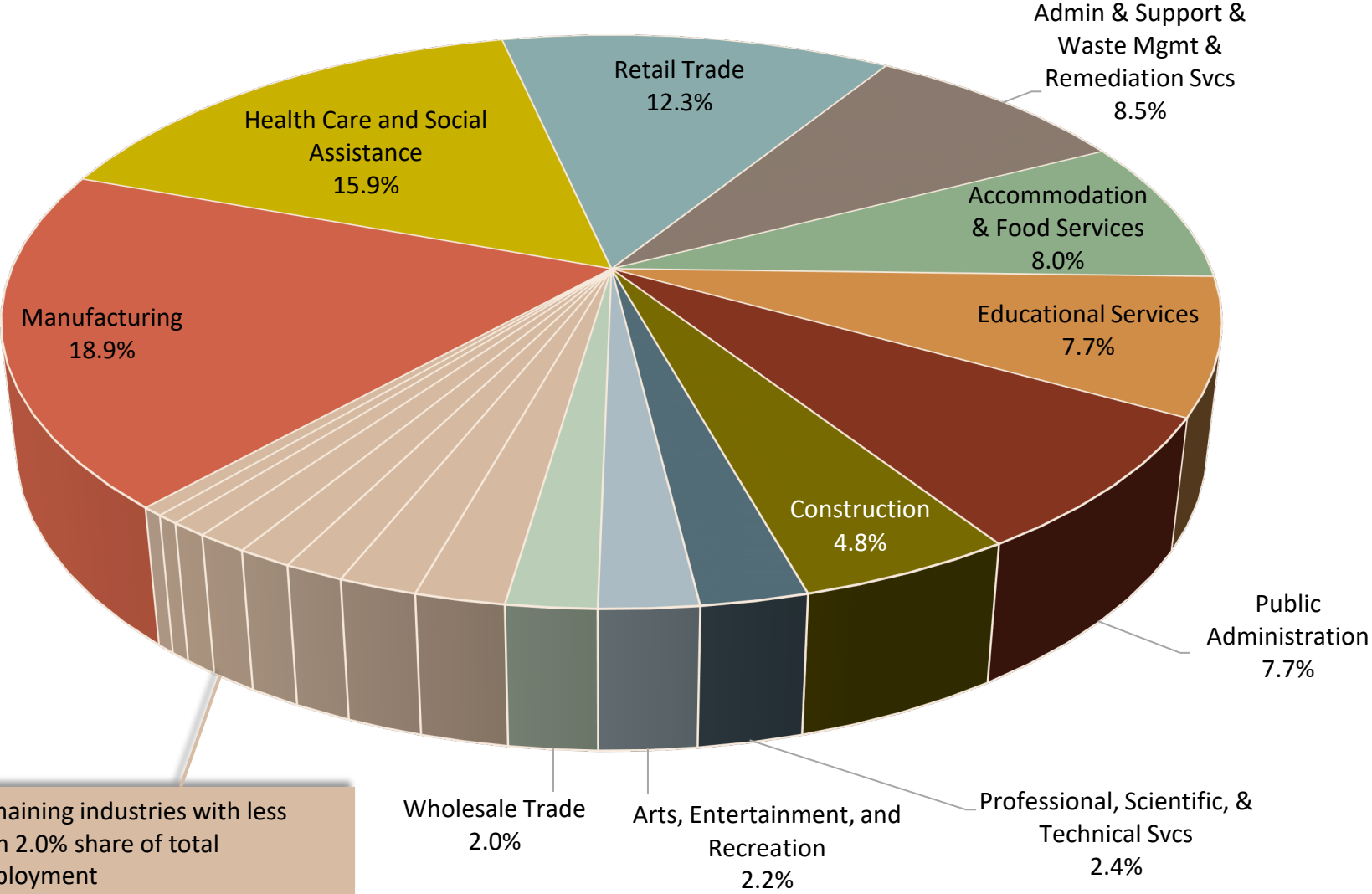
	Count	Share
Tallapoosa County, AL	5,704	34.5%
Lee County, AL	2,023	12.2%
Montgomery County, AL	1,634	9.9%
Jefferson County, AL	1,338	8.1%
Elmore County, AL	992	6.0%
Talladega County, AL	513	3.1%
Shelby County, AL	442	2.7%
Coosa County, AL	329	2.0%
Calhoun County, AL	304	1.8%
Madison County, AL	223	1.3%
All Other Locations	3,037	18.4%



Source: U.S. Census Bureau, OnTheMap Application and LEHD Origin-Destination Employment Statistics in Partnership with the Alabama Department of Workforce, Labor Market Information Division.

Tallapoosa County Industry Distribution

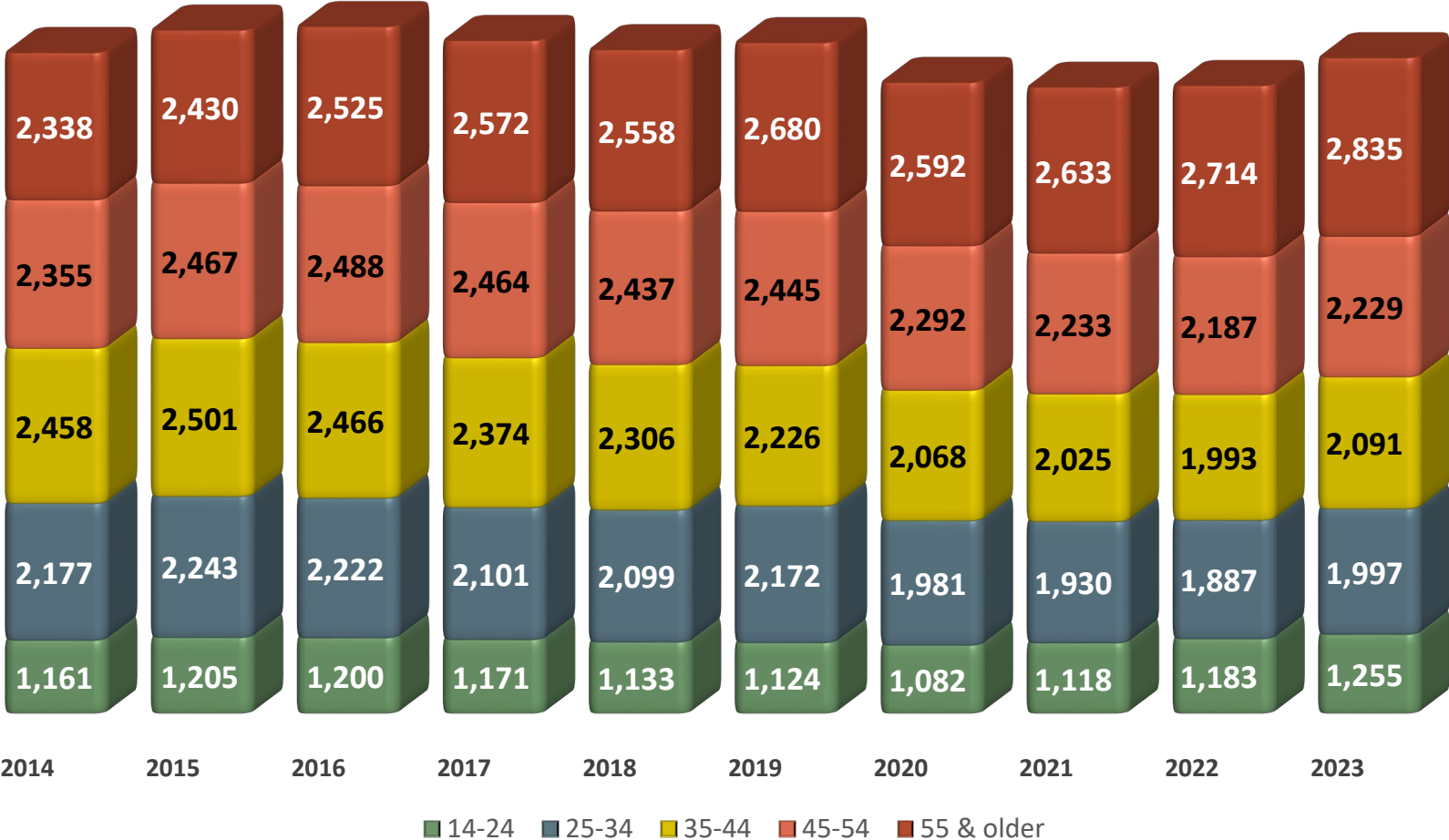
2023



Source: Longitudinal Employer Household Dynamics program which is a partnership between the Census Bureau and the Alabama Department of Workforce, Labor Market Information Division.

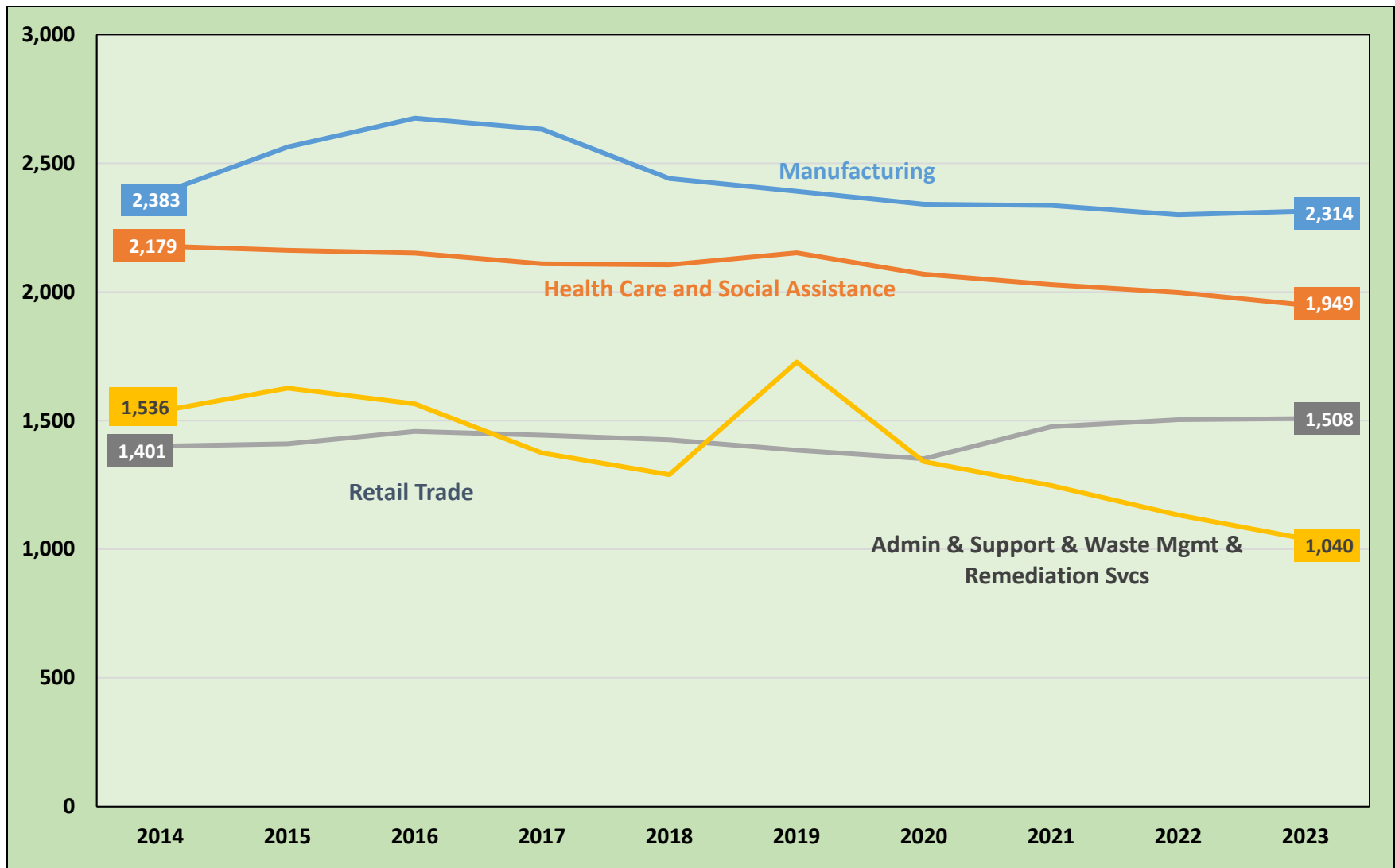
Employment by Age Group

Total All Industries

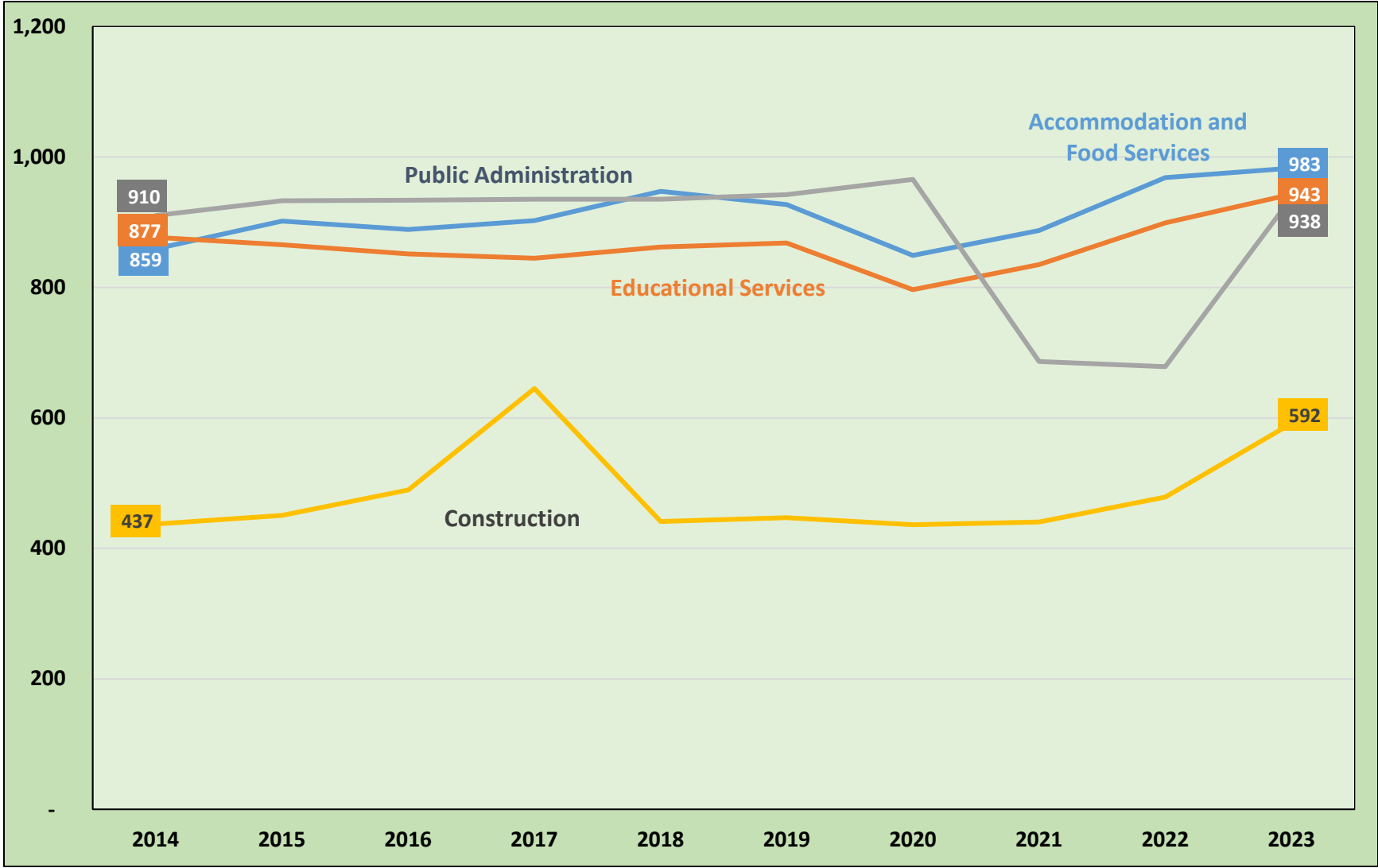


Source: Longitudinal Employer Household Dynamics program which is a partnership between the Census Bureau and the Alabama Department of Workforce, Labor Market Information Division.

Industry Sector Employment Trends

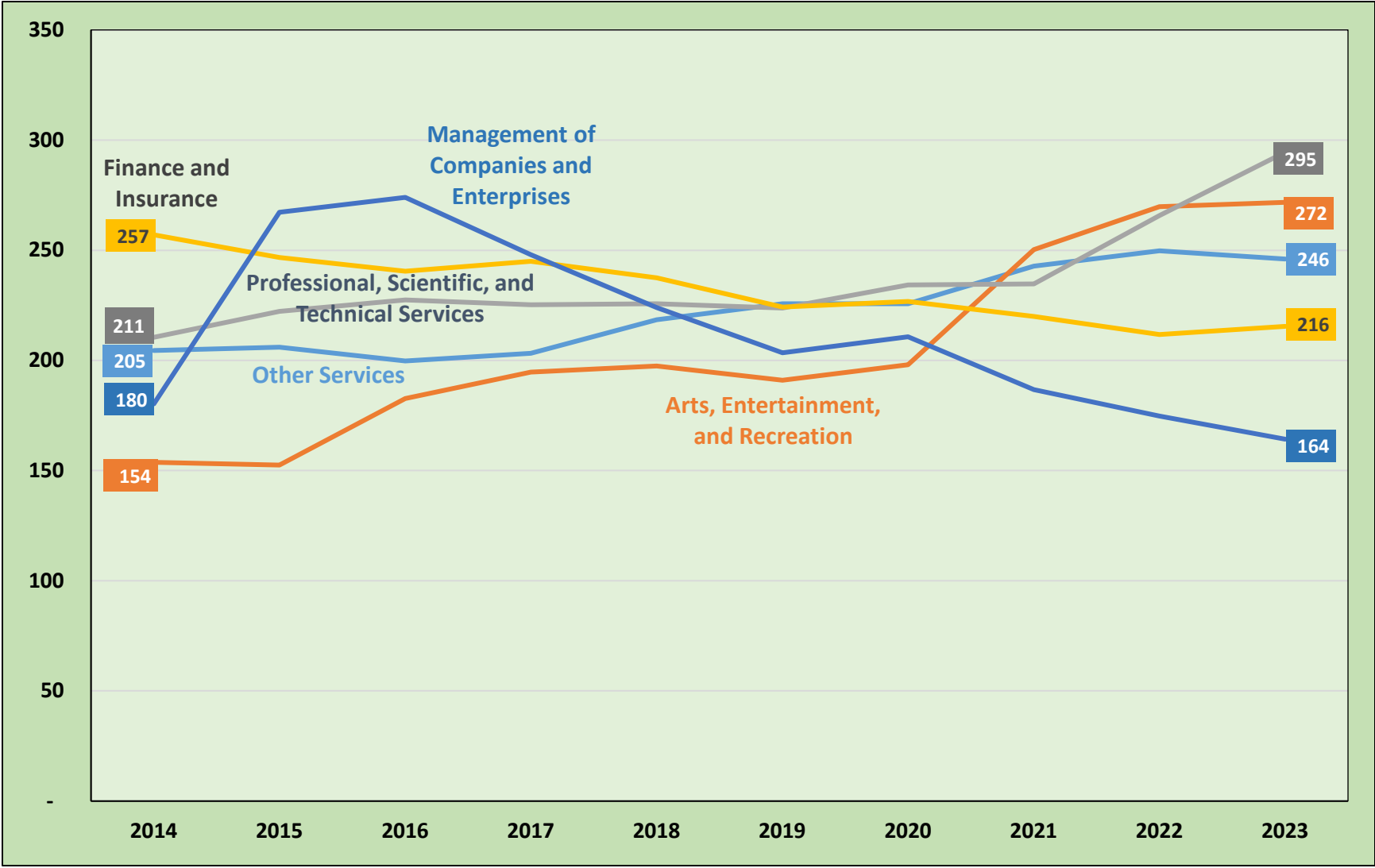


Industry Sector Employment Trends



Source: Longitudinal Employer Household Dynamics program which is a partnership between the Census Bureau and the Alabama Department of Workforce, Labor Market Information Division.

Industry Sector Employment Trends



Source: Longitudinal Employer Household Dynamics program which is a partnership between the Census Bureau and the Alabama Department of Workforce, Labor Market Information Division.

Average Monthly Earnings Trend



Source: Longitudinal Employer Household Dynamics program which is a partnership between the Census Bureau and the Alabama Department of Workforce, Labor Market Information Division.

Postsecondary Education

HS Graduates Enrolled in Alabama Public Colleges Fall 2024

High School	HS Grads	Enrolled in AL Public Colleges	Enrolled in Remedial Course(s)				Enrollment Status	
			Math Only	English Only	Both	Total	Full Time	Part Time/ Other
Benjamin Russell High School	167	82	10	3	2	15	74	8
Dadeville High School	74	25	3	1	0	4	21	4
Horseshoe Bend High School	58	21	1	1	1	3	19	2
Reeltown High School	51	18	1	1	2	4	15	3

Source: Alabama Commission on Higher Education; 2023-2024 High School Report.

Postsecondary Education

Fall 2024 Undergraduate Enrollment of Students Attending Alabama Public Two-Year and Four-Year Institutions

Tallapoosa County		# Undergrads	# First-Time Freshman
Major	Grand Total	1,077	194
	Undeclared	258	3
	General Studies	233	85
	Registered Nursing/Registered Nurse	65	9
	Multi-/Interdisciplinary Studies, Other	48	14
	Business Administration and Management, General	46	15
	Psychology, General	21	5
	Computer and Information Sciences, General	19	7
	Liberal Arts and Sciences/Liberal Studies	18	5
	Accounting	14	0
	Biomedical Sciences, General	13	4
	Business/Commerce, General	13	2
	Elementary Education and Teaching	13	2
	Civil Engineering, General	11	1
	Marketing/Marketing Management, General	11	1
	Social Work	11	0

Postsecondary Education

Summer 2023 thru Spring 2024 Completions of Students from Alabama Public Two-Year and Four-Year Institutions

Major	Less than 1 year	Less than 2 years	Associate	Less than 4 years	Bachelor	Post-Bachelor	Master	Post-Master	Doctoral	Tallapoosa Total	* State Totals
General Studies	30	-	35	-	-	-	-	-	-	65	6,081
Registered Nursing/Registered Nurse	-	-	20	-	14	2	5	-	-	41	3,947
Computer and Information Sciences, General	17	-	7	-	4	-	-	-	-	28	1,429
Medical/Clinical Assistant	10	2	3	-	-	-	-	-	-	15	263
Licensed Practical/Vocational Nurse Training	-	14	-	-	-	-	-	-	-	14	1,501
Elementary Education and Teaching	-	-	-	-	9	-	2	1	-	12	1,071
Business Administration and Management, General	1	1	-	-	6	-	3	-	-	11	2,265
Marketing/Marketing Management, General	-	-	-	-	6	-	1	-	-	7	570
Automotive Engineering Technology/Technician	6	-	-	-	-	-	-	-	-	6	156
Cosmetology/Cosmetologist, General	3	2	-	-	-	-	-	-	-	5	337
Emergency Medical Technology/Technician (EMT Paramedic)	5	-	-	-	-	-	-	-	-	5	782
Special Education and Teaching, General	-	-	-	-	1	-	3	1	-	5	287
Accounting	-	-	-	-	3	-	1	-	-	4	793
Biomedical Sciences, General	-	-	-	-	4	-	-	-	-	4	441
Educational Leadership and Administration, General	-	-	-	-	-	1	1	2	-	4	362



Source: Alabama Commission on Higher Education: Alabama Statewide Student Database.

Questions???

Alabama Department of Workforce
Labor Market Information Division
LMI.LABOR@labor.Alabama.gov