

St. Clair County Profile

Alabama Department of Labor
Labor Market Information Division

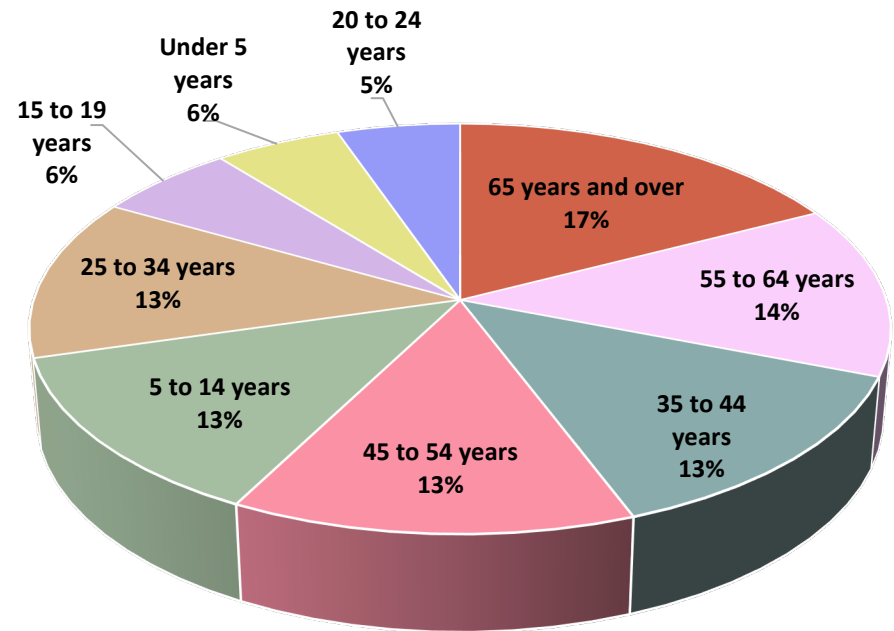
Demographics

American Community Survey Average Population Estimates for 2018-2022

Age	Estimate
Under 5 years	4,981
5 to 14 years	11,845
15 to 19 years	5,524
20 to 24 years	4,846
25 to 34 years	11,701
35 to 44 years	12,238
45 to 54 years	12,224
55 to 64 years	12,405
65 and older	15,955

Total Population
91,719

Population By Age Group:



Demographics

American Community Survey Average Population Estimates for 2018-2022

School Enrollment	Estimate
Population 3 years and over enrolled in school	20,225
Nursery school, preschool	1,384
Kindergarten	974
Elementary school (grades 1-8)	9,486
High school (grades 9-12)	4,942
College or graduate school	3,439
Educational Attainment	Estimate
Population 25 years and over	64,523
Less than 9 th grade	5,585
9 th to 12 th grade, no diploma	5,585
High school graduate (includes equivalency)	22,916
Some college, no degree	14,983
Associate's degree	5,950
Bachelor's degree	8,608
Graduate or professional degree	3,863

Unemployment Data

November 2023 Unemployment & Underemployment Data

County	Civilian Labor Force	Employment	Unemployment	Unemployment Rate	Under-Employment	Available Labor Pool
Blount	26,379	25,823	556	2.1%	5,681	6,237
Chilton	20,747	20,303	444	2.1%	3,330	3,774
Jefferson	329,385	321,418	7,967	2.4%	58,177	66,144
Shelby	43,108	42,159	949	2.2%	6,029	6,978
St. Clair	123,861	121,576	2,285	1.8%	19,938	22,223
Walker	26,050	25,389	661	2.5%	6,423	7,084

Unemployment + Underemployment = Potential Available Labor Pool

Source: LAUS data, County Unemployment Rates, Unemployment Data for Labor Force, Employment, Unemployment, and Unemployment Rate Data.
Underemployment in Alabama WIA Areas, Published September 2023, CBER @ UA, Underemployment and Available Labor Pool Data.

Unemployment Data

Initial Claims by Occupation 2023, Annual

Occupation	Number Unemployed	Occupation	Number Unemployed
Customer Service Representatives	71	Laborers and Freight, Stock, and Material Movers	22
Helpers--Production Workers	47	Light Truck Drivers	21
Cashiers	44	Sales Managers	19
Heavy and Tractor-Trailer Truck Drivers	42	Production Workers, All Other	18
Retail Salespersons	40	Managers, All Other	17
Waiters and Waitresses	39	Bookkeeping, Accounting, and Auditing Clerks	17
General and Operations Managers	37	Receptionists and Information Clerks	17
Medical Assistants	35	Packaging and Filling Machine Operators and Tenders	17
Welders, Cutters, Solderers, and Brazers	30	Stockers and Order Fillers	16
Office Clerks, General	29	Supervisors of Production and Operating Workers	16
Industrial Truck and Tractor Operators	29	Construction Managers	15
Team Assemblers	28	Human Resources Specialists	14
Automotive Service Technicians and Mechanics	26	Teacher Assistants	14
Nursing Assistants	24	Security Guards	14
Office and Administrative Support Workers, All Other	22	Sales Reps, Wholesale & Mfg, Exc. Technical & Scientific Products	14



Help Wanted OnLine[®] Annual Job Postings

2023 Top Occupations with Most Ads Posted

Occupation	# of Ads	Occupation	# of Ads
Registered Nurses	207	Merchandise Displayers & Window Trimmers	51
Retail Salespersons	190	Nursing Assistants	48
Supervisors of Retail Sales Workers	140	Stockers & Order Fillers	47
Laborers & Freight, Stock, & Material Movers, Hand	126	Janitors & Cleaners, Except Maids & Housekeeping Cleaners	44
Licensed Practical & Vocational Nurses	117	Inspectors, Testers, Sorters, Samplers, & Weighers	43
Customer Service Representatives	101	Welders, Cutters, Solderers, & Brazers	39
Food Service Managers	79	Supervisors of Food Preparation & Serving Workers	38
Fast Food & Counter Workers	76	Shipping, Receiving, & Inventory Clerks	38
Production Workers, All Other	69	General & Operations Managers	36
Sales Reps, Wholesale & Manufacturing, Exc Technical & Scientific Products	65	Medical Assistants	36
Heavy & Tractor-Trailer Truck Drivers	60	Postal Service Clerks	36
Cashiers	57	Driver/Sales Workers	36
Medical & Health Services Managers	55	Light Truck Drivers	35
Automotive Service Technicians & Mechanics	52	Physical Therapists	32
Maintenance & Repair Workers, General	52	Construction Laborers	32



Expected Worker Shortfall

	2020-2030	2020-2035
Total Population Growth	14.4%	21.1%
Age 20-64 Population Growth	14.3%	20.9%
Nonagricultural Job Growth	6.4%	8.0%
Worker Shortfall	-7.9%	-12.9%
Worker Shortfall	-1,597	-2,615

Note: A negative Worker Shortfall indicates a projected surplus of workers versus available jobs.



Occupational Wages

St. Clair County Average Hourly Wage All Occupations

Entry	Median	Mean	Experienced
\$12.36	\$18.84	\$23.27	\$28.74

St. Clair County Average Hourly Wage Manufacturing

Entry	Median	Mean	Experienced
\$15.13	\$20.71	\$25.73	\$31.04

Source: Alabama Department of Labor, Labor Market Information Division in cooperation with the U.S. Bureau of Labor Statistics. The data is based on the 2022 release of the Occupational Employment Statistics report, employment and wage estimate file. Wage data has been aged using the latest quarterly Employment Cost Index (ECI) factors. 'NA' indicates data not available for publication.

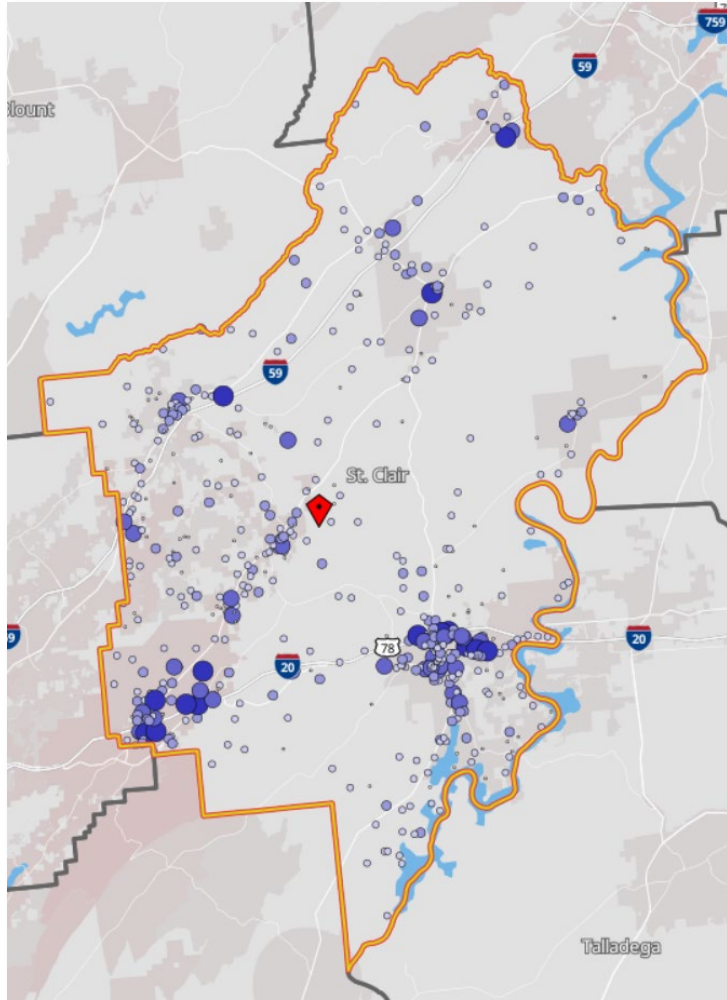
Occupational Wages

Annual Salary Area Comparison

	Entry	Median	Mean	Experienced
Alabama				
Total	\$27,775	\$47,005	\$61,395	\$78,205
Manufacturing	\$30,764	\$45,305	\$55,077	\$67,233
St. Clair County				
Total	\$25,704	\$39,174	\$48,419	\$59,777
Manufacturing	\$31,481	\$43,078	\$53,534	\$64,560
Jefferson County				
Total	\$27,585	\$45,980	\$59,514	\$75,480
Manufacturing	\$33,496	\$48,103	\$55,159	\$65,990
Shelby County				
Total	\$26,809	\$42,496	\$57,034	\$72,147
Manufacturing	\$32,125	\$43,890	\$54,259	\$65,327

Source: Alabama Department of Labor, Labor Market Information Division in cooperation with the U.S. Bureau of Labor Statistics. The data is based on the 2022 release of the Occupational Employment Statistics report, employment and wage estimate file. Wage data has been aged using the latest quarterly Employment Cost Index (ECI) factors. 'NA' indicates data not available for publication.

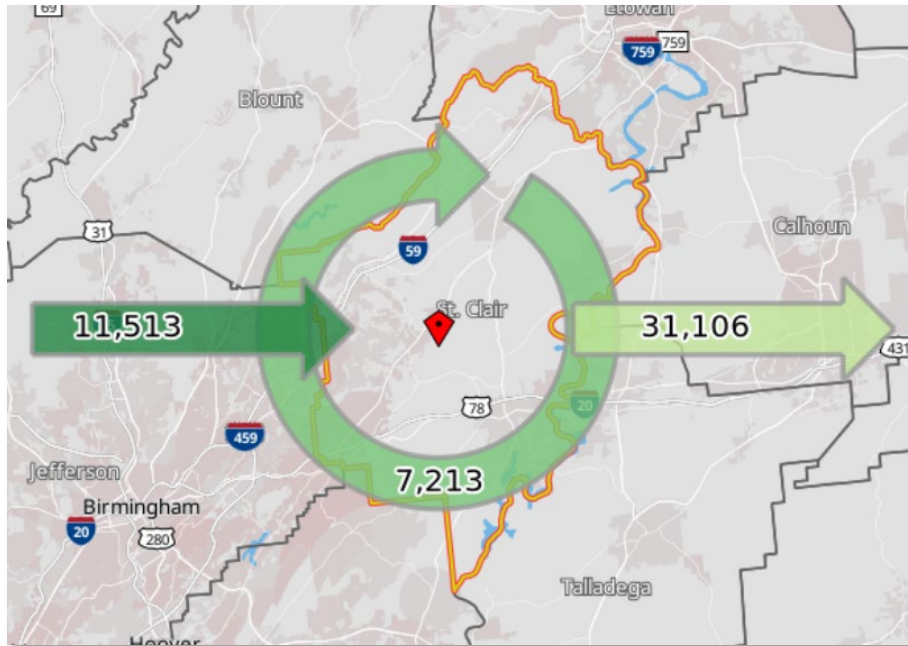
2021 Workforce Characteristics



Jobs by Worker Age	Count	Share
Age 29 or younger	4,788	25.6%
Age 30 to 54	9,894	52.8%
Age 55 or older	4,044	21.6%
Jobs by Worker Educational Attainment	Count	Share
Less than high school	1,964	10.5%
High school or equivalent, no college	4,610	24.6%
Some college or Associate degree	4,508	24.1%
Bachelor's degree or advanced degree	2,856	15.3%
Educational attainment not available (workers aged 29 or younger)	4,788	25.6%
Jobs by Worker Sex	Count	Share
Male	9,763	52.1%
Female	8,963	47.9%
Jobs by Earnings	Count	Share
\$1,250 per month or less	3,304	17.6%
\$1,251 to \$3,333 per month	7,020	37.5%
More than \$3,333 per month	8,402	44.9%

2021 Commuting Patterns

Labor Force Characteristics



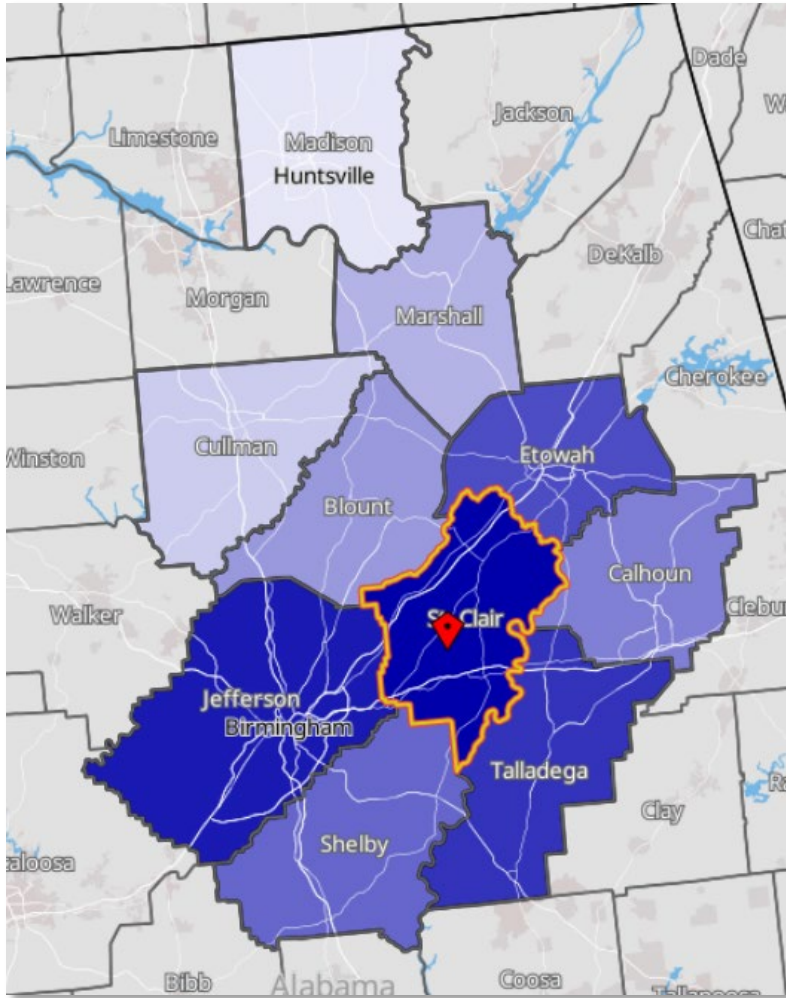
Outflow Job Characteristics	Count	Share
External Jobs Filled by Residents	31,106	100.0%
Workers Aged 29 or younger	7,083	22.8%
Workers Aged 30 to 54	16,951	54.5%
Workers Aged 55 or older	7,072	22.7%
Workers Earning \$1,250 per month or less	4,168	13.4%
Workers Earning \$1,251 to \$3,333 per month	8,599	27.6%
Workers Earning More than \$3,333 per month	18,339	59.0%
Workers in the "Goods Producing" Industry Class	6,080	19.5%
Workers in the "Trade, Transportation, and Utilities" Industry Class	7,564	24.3%
Workers in the "All Other Services" Industry Class	17,462	56.1%

**Live in the County
but Work Elsewhere**
81.2%

**Live and Work
in the County**
18.8%

2021 Commuting Patterns

Where People Live who Work in This County



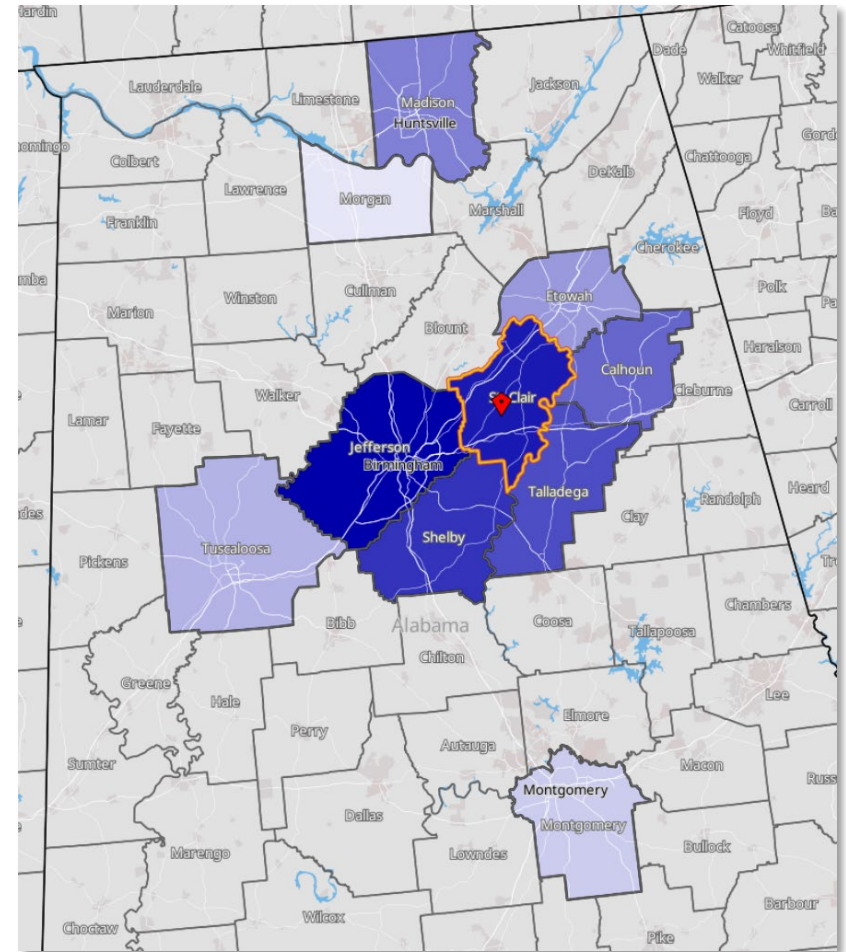
	Count	Share
St. Clair County, AL	7,213	38.5%
Jefferson County, AL	2,541	13.6%
Talladega County, AL	1,435	7.7%
Etowah County, AL	999	5.3%
Shelby County, AL	987	5.3%
Calhoun County, AL	952	5.1%
Blount County, AL	584	3.1%
Marshall County, AL	288	1.5%
Cullman County, AL	273	1.5%
Madison County, AL	272	1.5%
All Other Locations	3,182	17.0%

Source: U.S. Census Bureau, OnTheMap Application and LEHD Origin-Destination Employment Statistics in Partnership with the Alabama Department of Labor, Labor Market Information Division.

2021 Commuting Patterns

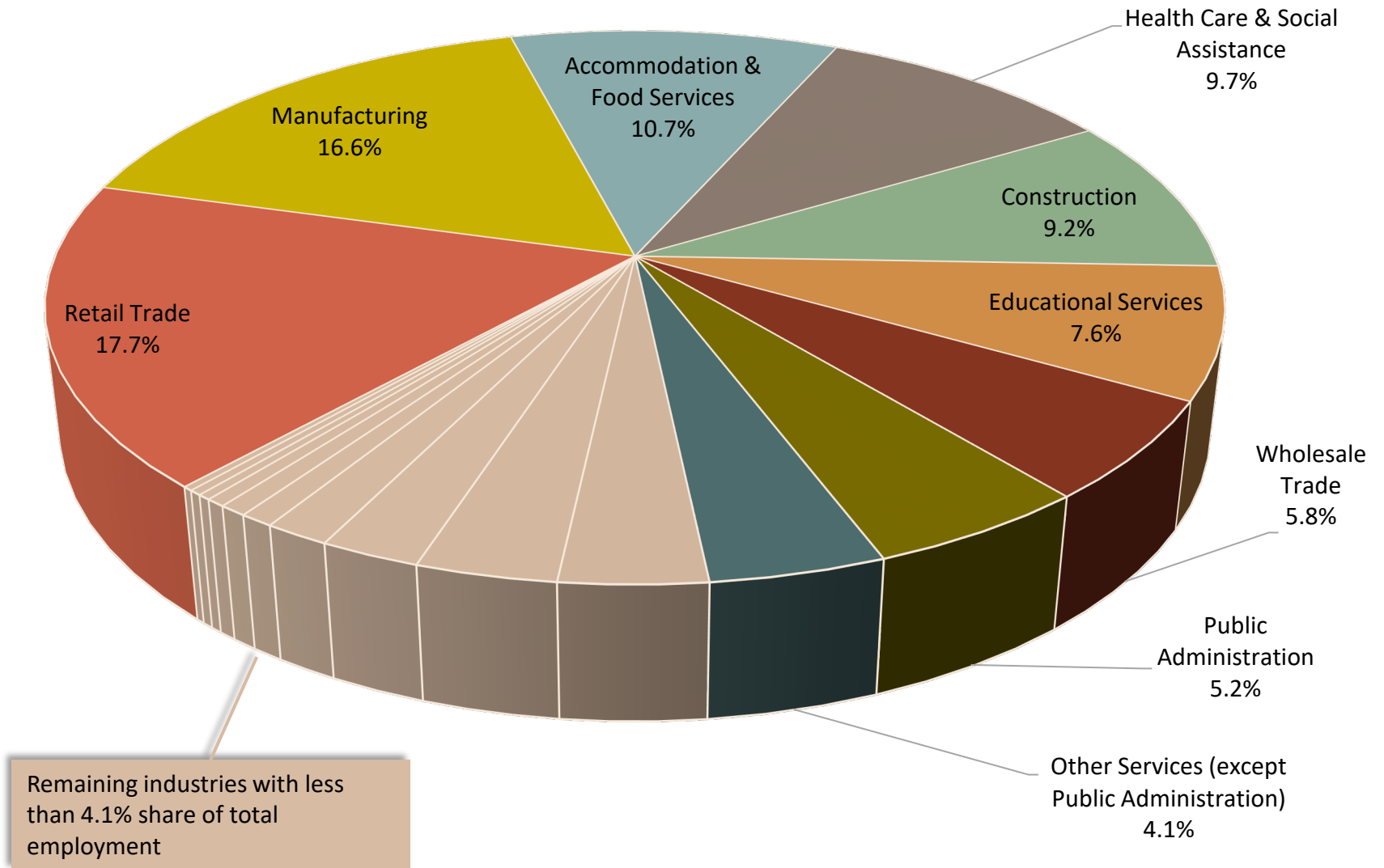
Where People Work who Live in This County

	Count	Share
Jefferson County, AL	17,172	44.8%
St. Clair County, AL	7,213	18.8%
Shelby County, AL	2,995	7.8%
Talladega County, AL	1,991	5.2%
Calhoun County, AL	1,201	3.1%
Madison County, AL	1,068	2.8%
Etowah County, AL	1,043	2.7%
Tuscaloosa County, AL	682	1.8%
Montgomery County, AL	434	1.1%
Morgan County, AL	421	1.1%
All Other Locations	4,099	10.7%



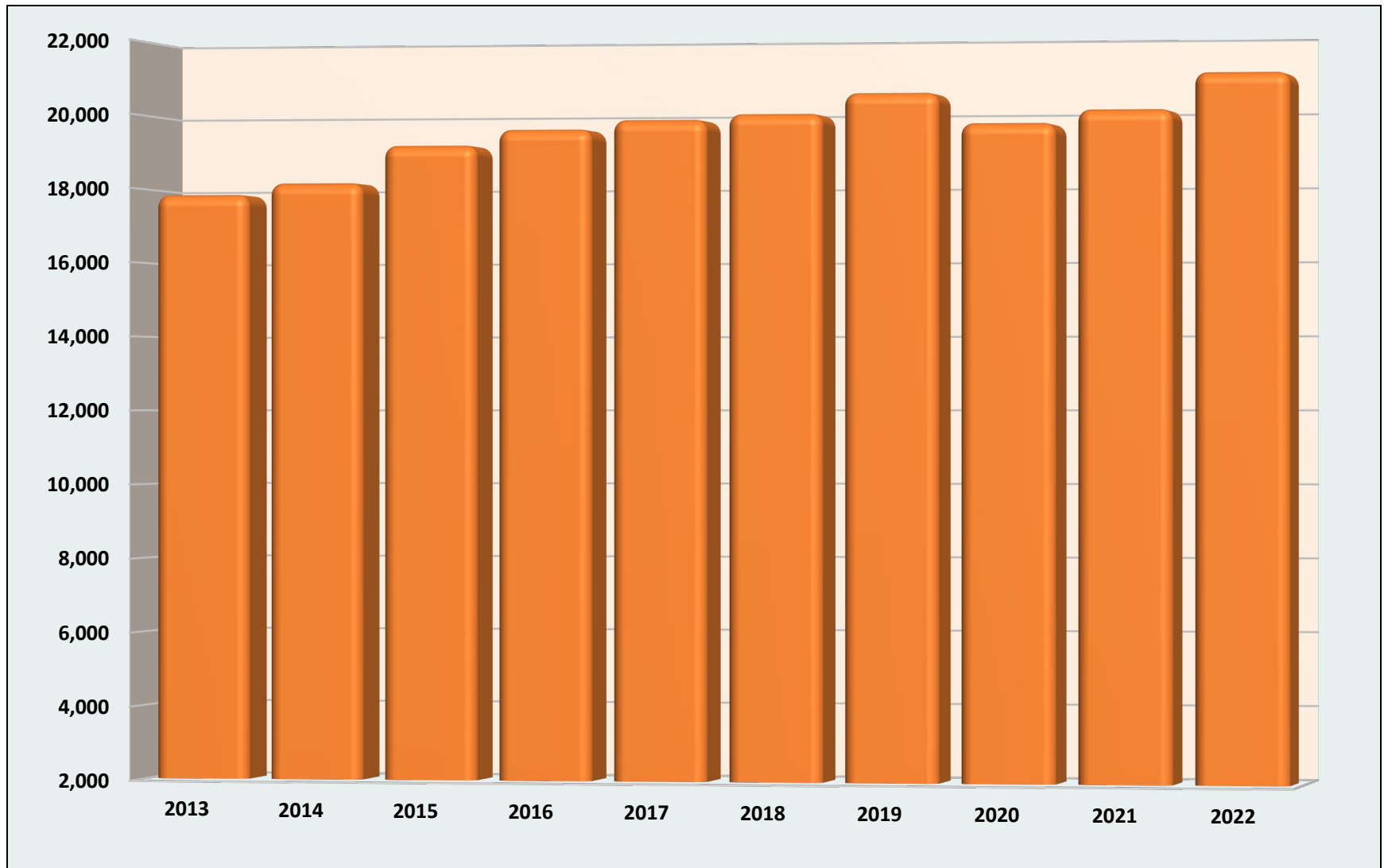
St. Clair County Industry Distribution

2022

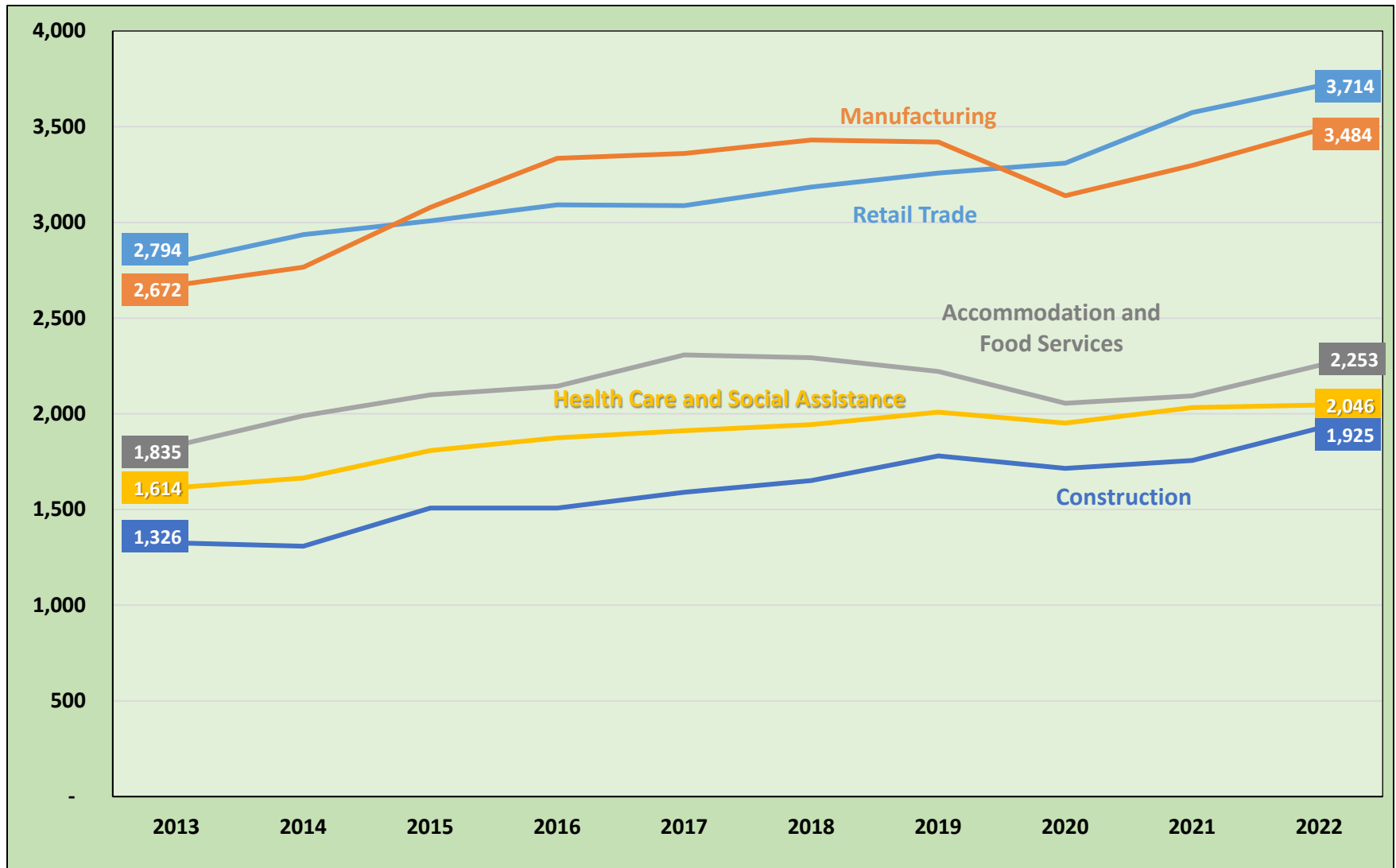


Source: Longitudinal Employer Household Dynamics program which is a partnership between the Census Bureau and the Alabama Department of Labor, Labor Market Information Division.

Industry Total Employment Trend

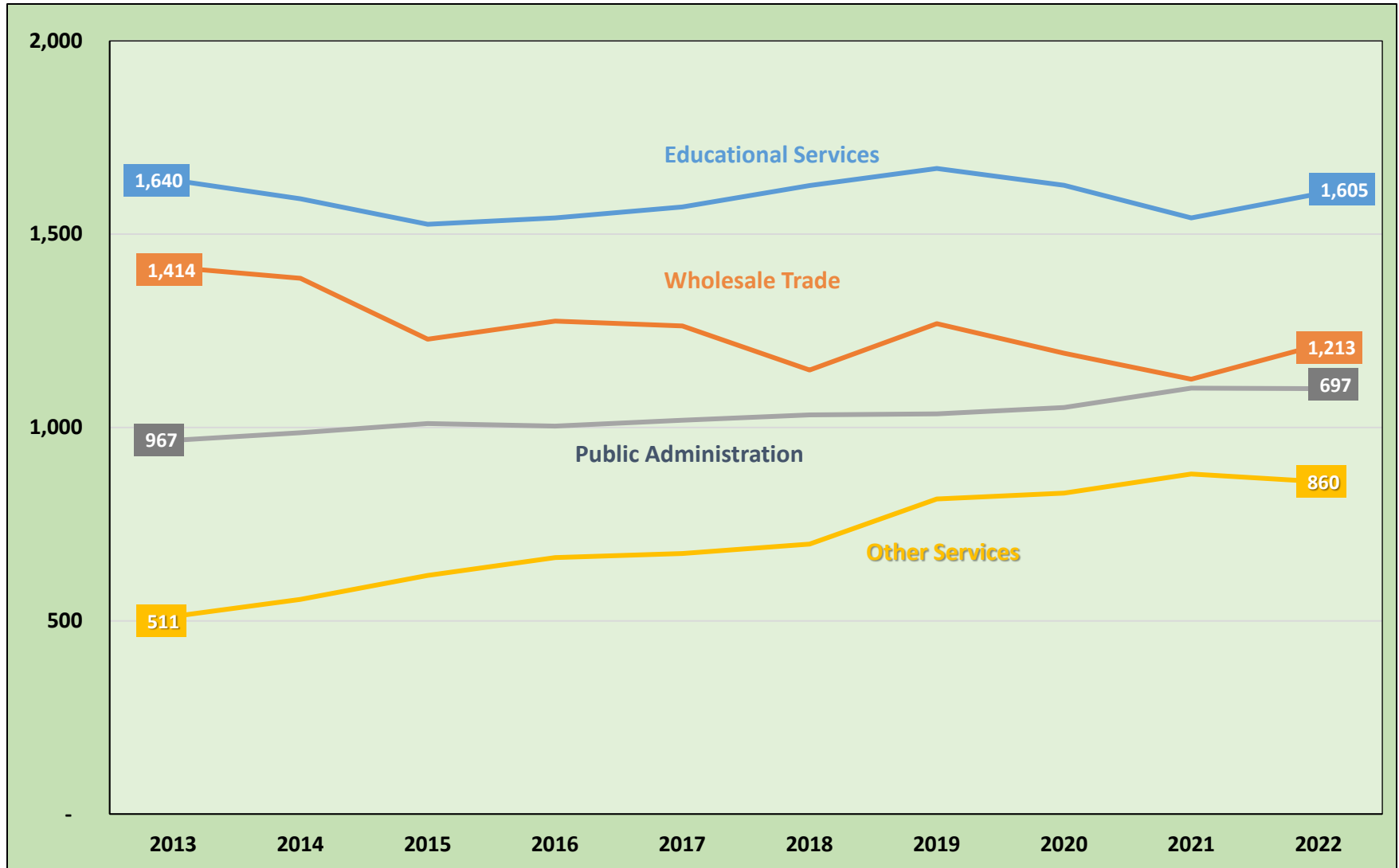


Industry Sector Employment Trends



Source: Longitudinal Employer Household Dynamics program which is a partnership between the Census Bureau and the Alabama Department of Labor, Labor Market Information Division.

Industry Sector Employment Trends



Source: Longitudinal Employer Household Dynamics program which is a partnership between the Census Bureau and the Alabama Department of Labor, Labor Market Information Division.

Average Monthly Earnings Trend



Postsecondary Education

2021-2022 HS Graduates Enrolled in Alabama Public Colleges

High School	HS Grads	Enrolled in AL Public Colleges	Enrolled in Remedial Course(s)				Enrollment Status	
			Math Only	English Only	Both	Total	Full Time	Part Time/Other
Ashville High School	67	26	2	2	2	6	23	3
Moody High School	153	89	13	4	5	22	81	8
Pell City High School	228	85	13	2	1	16	83	2
Ragland High School	25	10	3	0	0	3	6	4
Saint Clair County High School	138	53	12	2	3	17	49	4
SCC Virtual Preparatory Academy	98	21	1	0	1	2	15	6
Springville High School	187	108	15	1	3	19	97	11



Source: Alabama Commission on Higher Education; 2022 High School Report.

Postsecondary Education

Fall 2022 Undergraduate Enrollment of Students Attending Alabama Public Two-Year and Four-Year Institutions

St. Clair County		# Undergrads	# First-Time Freshman
Major	Grand Total	2,459	514
	Undeclared/NotReported	439	25
	General Studies	430	130
	Registered Nursing/Registered Nurse	220	43
	Business Administration and Management, General	85	22
	Psychology, General	60	11
	Elementary Education and Teaching	59	12
	Computer and Information Sciences, General	49	8
	Liberal Arts and Sciences/Liberal Studies	47	16
	Biology/Biological Sciences, General	32	10
	Marketing/Marketing Management, General	31	4
	Accounting	29	3
	Office Management and Supervision	27	5
	Radiologic Technology/Science - Radiographer	25	8
	Social Work	24	5
	Finance, General	23	2

Postsecondary Education

Summer 2021 thru Spring 2022 Completions of Students from Alabama Public Two-Year and Four-Year Institutions

Major	Less than 1 year	Less than 2 years	Associate	Less than 4 years	Bachelor	Post-Bachelor	Master	Post-Master	Doctoral	St. Clair Total	* State Totals
Registered Nursing/Registered Nurse	0	0	33	0	33	0	10	0	0	76	3,814
Liberal Arts and Sciences/Liberal Studies	0	0	50	0	4	0	0	0	0	54	1,089
General Studies	3	0	46	0	4	0	0	0	0	53	6,052
Engineering Technologies/Technicians, General	13	10	9	0	0	0	0	0	0	32	251
Business Administration and Management, General	1	1	2	0	10	0	8	0	0	22	2,201
Elementary Education and Teaching	0	0	0	0	11	0	8	0	0	19	1,158
Computer and Information Sciences, General	4	4	4	0	5	0	1	0	0	18	1,304
Welding Technology/Welder	14	2	0	0	0	0	0	0	0	16	1,136
Accounting	0	1	0	0	12	0	1	0	0	14	819
Respiratory Care Therapy/Therapist	0	0	11	0	2	0	0	0	0	13	112
Marketing/Marketing Management, General	0	0	0	0	11	0	1	0	0	12	659
Psychology, General	0	0	0	0	12	0	0	0	0	12	836
Finance, General	0	0	0	0	11	0	0	0	0	11	457
Educational Leadership and Administration, General	0	0	0	0	0	0	7	3	0	10	409
Licensed Practical/Vocational Nurse Training	0	10	0	0	0	0	0	0	0	10	1,186

Questions???

Alabama Department of Labor
Labor Market Information Division
LMI.LABOR@labor.Alabama.gov

Phone (334) 956-7465