



Elmore County Profile

Alabama Department of Workforce
Labor Market Information Division

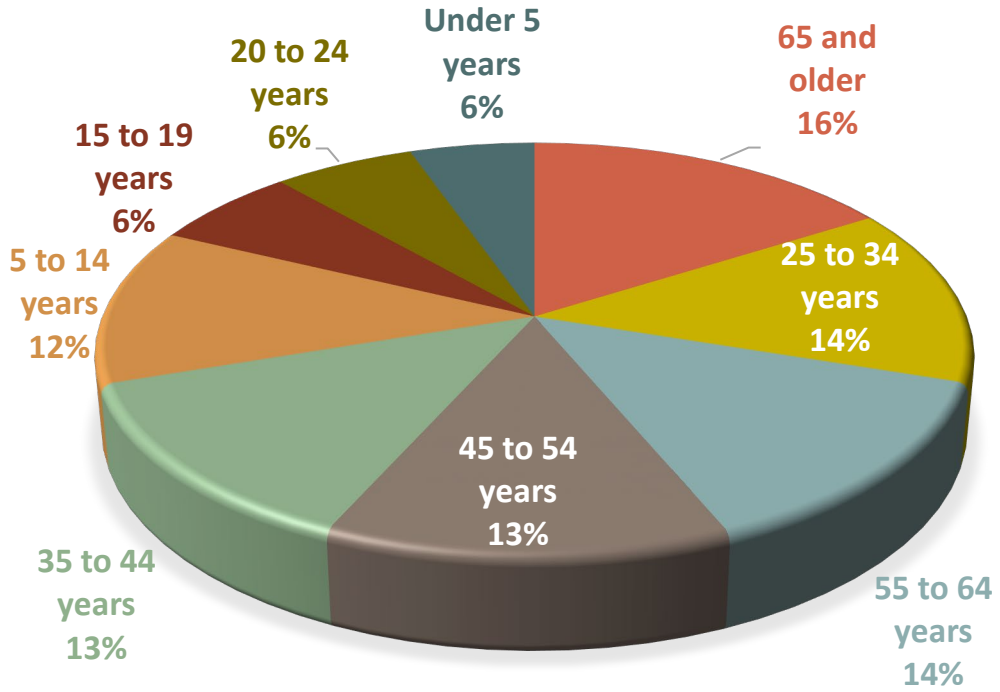
Demographics

American Community Survey Average Population Estimates for 2019-2023

Age	Estimate
Under 5 years	4,782
5 to 14 years	10,902
15 to 19 years	5,657
20 to 24 years	5,412
25 to 34 years	12,412
35 to 44 years	11,587
45 to 54 years	11,602
55 to 64 years	12,071
65 and older	14,244

Total Population
88,669

Population By Age Group:



Source: U.S. Census Bureau, 2019-2023 5-Year American Community Survey Table DP05: Demographic and Housing Estimates

Demographics

American Community Survey Average Population Estimates for 2019-2023

School Enrollment	Estimate
Population 3 years and over enrolled in school	19,618
Nursery school, preschool	1,319
Kindergarten	830
Elementary school (grades 1-8)	8,720
High school (grades 9-12)	4,713
College or graduate school	4,036
Educational Attainment	Estimate
Population 25 years and over	61,916
Less than 9 th grade	1,933
9 th to 12 th grade, no diploma	4,513
High school graduate (includes equivalency)	21,341
Some college, no degree	12,917
Associate's degree	6,108
Bachelor's degree	9,976
Graduate or professional degree	5,128

Unemployment Data

November 2024 Unemployment & Underemployment Data

County	Civilian Labor Force	Employment	Unemployment	Unemployment Rate	Under-Employment	Available Labor Pool
Autauga	27,583	26,746	837	2.8%	5,322	6,159
Dallas	13,550	12,682	868	6.2%	4,223	5,091
Elmore	39,381	38,222	1,159	2.8%	6,995	8,154
Lowndes	3,584	3,386	198	5.2%	962	1,160
Macon	7,893	7,526	367	4.1%	2,152	2,519
Montgomery	110,023	106,135	3,888	3.4%	23,350	27,238
Perry	3,112	2,918	194	5.3%	972	1,166

Unemployment + Underemployment = Potential Available Labor Pool

Source: LAUS data, County Unemployment Rates, Unemployment Data for Labor Force, Employment, Unemployment, and Unemployment Rate Data. Underemployment in Alabama WIA Areas, Published September 2023, CBER @ UA, Underemployment and Available Labor Pool Data.

Unemployment Data

Initial Claims by Occupation 2024, Annual

Occupation	Number Unemployed	Occupation	Number Unemployed
Customer Service Representatives	70	Inspectors, Testers, Sorters, Samplers, and Weighers	13
Management Occupations	32	Insurance Sales Agents	13
General and Operations Managers	31	Accountants and Auditors	12
Team Assemblers	28	Janitors and Cleaners, Except Maids and Housekeeping Cleaners	12
Office Clerks, General	27	Medical and Health Services Managers	12
Cashiers	24	Helpers--Production Workers	11
Retail Sales Workers	24	Laborers and Freight, Stock, and Material Movers, Hand	11
Stockers and Order Fillers	21	Production Occupations	11
Retail Salespersons	19	Administrative Services Managers	10
Medical Assistants	18	Construction Laborers	10
Driver/Sales Workers and Truck Drivers	16	Industrial Truck and Tractor Operators	10
Electricians	15	Production Workers, All Other	10
Heavy and Tractor-Trailer Truck Drivers	15	Receptionists and Information Clerks	10
Managers, All Other	15	Sales Representatives, Services	10
Welders, Cutters, Solderers, and Brazers	14	Advertising, Marketing, Promotions, Public Relations, and Sales Managers	9



Help Wanted OnLine[®] Annual Job Postings

2024 Top Occupations with Most Ads Posted

Occupation	# of Ads	Occupation	# of Ads
Registered Nurses	151	Supervisors of Food Preparation and Serving Workers	29
Retail Salespersons	132	Cooks, Restaurant	28
Fast Food and Counter Workers	103	Waiters and Waitresses	28
Personal Care Aides	101	Janitors and Cleaners, Except Maids and Housekeeping Cleaners	27
Supervisors of Retail Sales Workers	88	Correctional Officers and Jailers	26
Food Service Managers	85	Maintenance and Repair Workers, General	26
Licensed Practical & Vocational Nurses	83	Stockers and Order Fillers	26
Customer Service Representatives	57	Supervisors of Office and Administrative Support Workers	24
Heavy and Tractor-Trailer Truck Drivers	56	Nursing Assistants	23
Merchandise Displayers and Window Trimmers	55	Sales Reps of Services, Except Advertising, Insurance, Financial Services, and Travel	23
General and Operations Managers	53	Security Guards	22
Cashiers	42	Hotel, Motel, and Resort Desk Clerks	22
Pharmacy Technicians	35	Laborers and Freight, Stock, and Material Movers, Hand	22
Medical and Health Services Managers	33	Chief Executives	21
Automotive Service Technicians and Mechanics	33	Amusement and Recreation Attendants	21



Expected Worker Shortfall

	2022-2032	2022-2040	2022-2045
Total Population Growth	8.7%	15.0%	18.8%
Age 20-64 Population Growth	5.6%	10.7%	14.4%
Nonagricultural Job Growth	1.4%	0.8%	0.8%
Worker Shortfall	-4.2%	-9.9%	-13.6%
Worker Shortfall	-904	-2,139	-2,943

Note: A negative Worker Shortfall indicates a projected surplus of workers versus available jobs.

Occupational Wages

Elmore County Average Hourly Wage All Occupations

Entry	Median	Mean	Experienced
\$12.15	\$18.46	\$23.46	\$29.10

Elmore County Average Hourly Wage Manufacturing

Entry	Median	Mean	Experienced
\$17.79	\$24.52	\$31.24	\$37.97

Source: Alabama Department of Workforce, Labor Market Information Division in cooperation with the U.S. Bureau of Labor Statistics. The data is based on the 2024 release of the Occupational Employment Statistics report, employment and wage estimate file. Wage data has been aged using the latest quarterly Employment Cost Index (ECI) factors. 'NA' indicates data not available for publication.

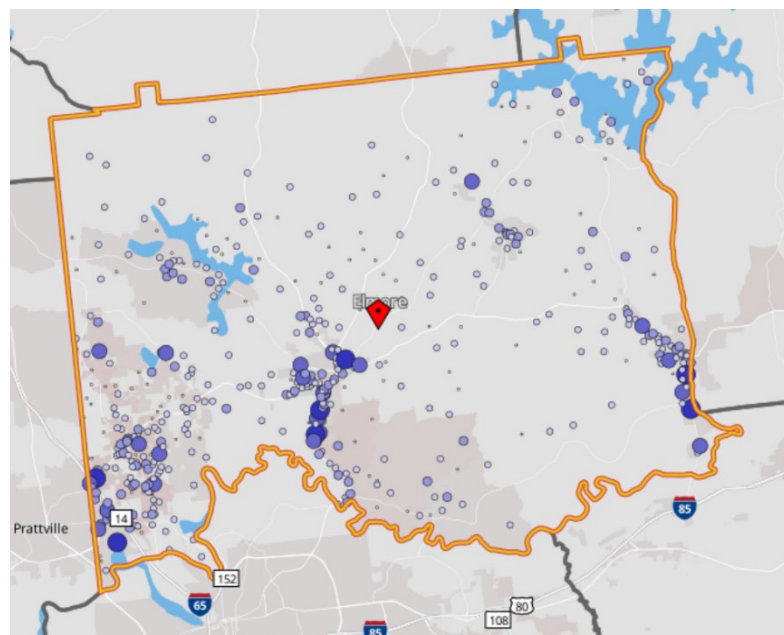
Occupational Wages

Annual Salary Area Comparison

	Entry	Median	Mean	Experienced
Alabama				
Total	\$27,814	\$45,371	\$57,292	\$72,030
Manufacturing	\$33,704	\$48,848	\$58,571	\$71,005
Elmore County				
Total	\$25,284	\$38,388	\$48,783	\$60,532
Manufacturing	\$37,018	\$51,014	\$64,989	\$78,976
Montgomery County				
Total	\$28,231	\$45,709	\$57,183	\$71,660
Manufacturing	\$34,264	\$49,042	\$55,710	\$66,432
Jefferson County				
Total	\$30,200	\$48,936	\$62,222	\$78,233
Manufacturing	\$36,500	\$49,876	\$59,395	\$70,843

Source: Alabama Department of Workforce, Labor Market Information Division in cooperation with the U.S. Bureau of Labor Statistics. The data is based on the 2024 release of the Occupational Employment Statistics report, employment and wage estimate file. Wage data has been aged using the latest quarterly Employment Cost Index (ECI) factors. 'NA' indicates data not available for publication.

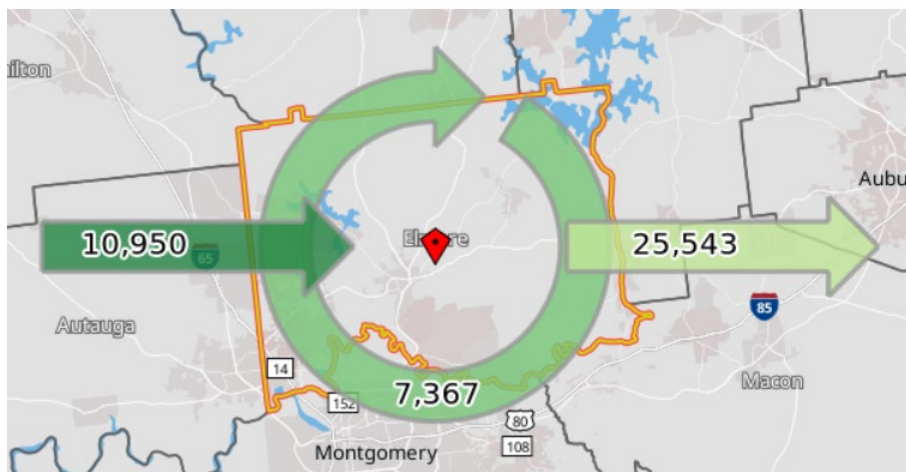
2022 Workforce Characteristics



Jobs by Worker Age	Count	Share
Age 29 or younger	4,939	27.0%
Age 30 to 54	9,189	50.2%
Age 55 or older	4,189	22.9%
Jobs by Worker Educational Attainment	Count	Share
Less than high school	1,823	10.0%
High school or equivalent, no college	4,233	23.1%
Some college or Associate degree	4,336	23.7%
Bachelor's degree or advanced degree	2,986	16.3%
Educational attainment not available (workers aged 29 or younger)	4,939	27.0%
Jobs by Worker Sex	Count	Share
Male	8,340	45.5%
Female	9,977	54.5%
Jobs by Earnings	Count	Share
\$1,250 per month or less	3,730	20.4%
\$1,251 to \$3,333 per month	6,657	36.3%
More than \$3,333 per month	7,930	43.3%

2022 Commuting Patterns

Labor Force Characteristics



Outflow Job Characteristics	Count	Share
External Jobs Filled by Residents	25,543	100.0%
Workers Aged 29 or younger	5,615	22.0%
Workers Aged 30 to 54	13,876	54.3%
Workers Aged 55 or older	6,052	23.7%
Workers Earning \$1,250 per month or less	3,442	13.5%
Workers Earning \$1,251 to \$3,333 per month	7,325	28.7%
Workers Earning More than \$3,333 per month	14,776	57.8%
Workers in the "Goods Producing" Industry Class	4,393	17.2%
Workers in the "Trade, Transportation, and Utilities" Industry Class	5,469	21.4%
Workers in the "All Other Services" Industry Class	15,681	61.4%

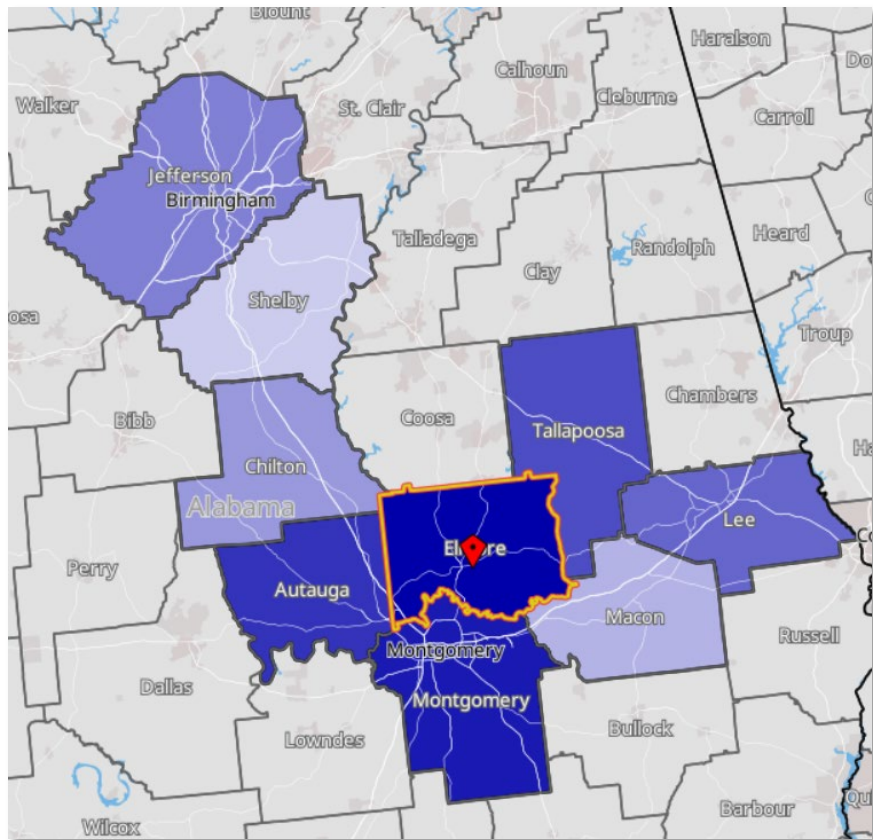
Live in the County but Work Elsewhere
58.2%

Live Elsewhere but Work in
the County
25.0%

Live and Work in
the County
16.8%

2022 Commuting Patterns

Where People Live who Work in This County

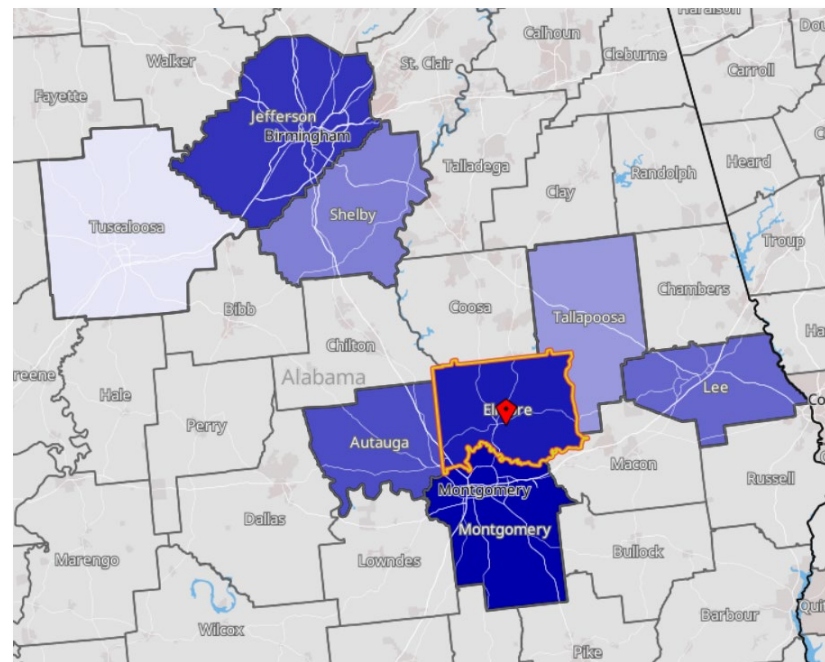


	Count	Share
Elmore County, AL	7,367	40.2%
Montgomery County, AL	2,837	15.5%
Autauga County, AL	1,758	9.6%
Tallapoosa County, AL	992	5.4%
Lee County, AL	537	2.9%
Jefferson County, AL	395	2.2%
Chilton County, AL	315	1.7%
Macon County, AL	281	1.5%
Shelby County, AL	240	1.3%
Mobile County, AL	231	1.3%
All Other Locations	3,364	18.4%

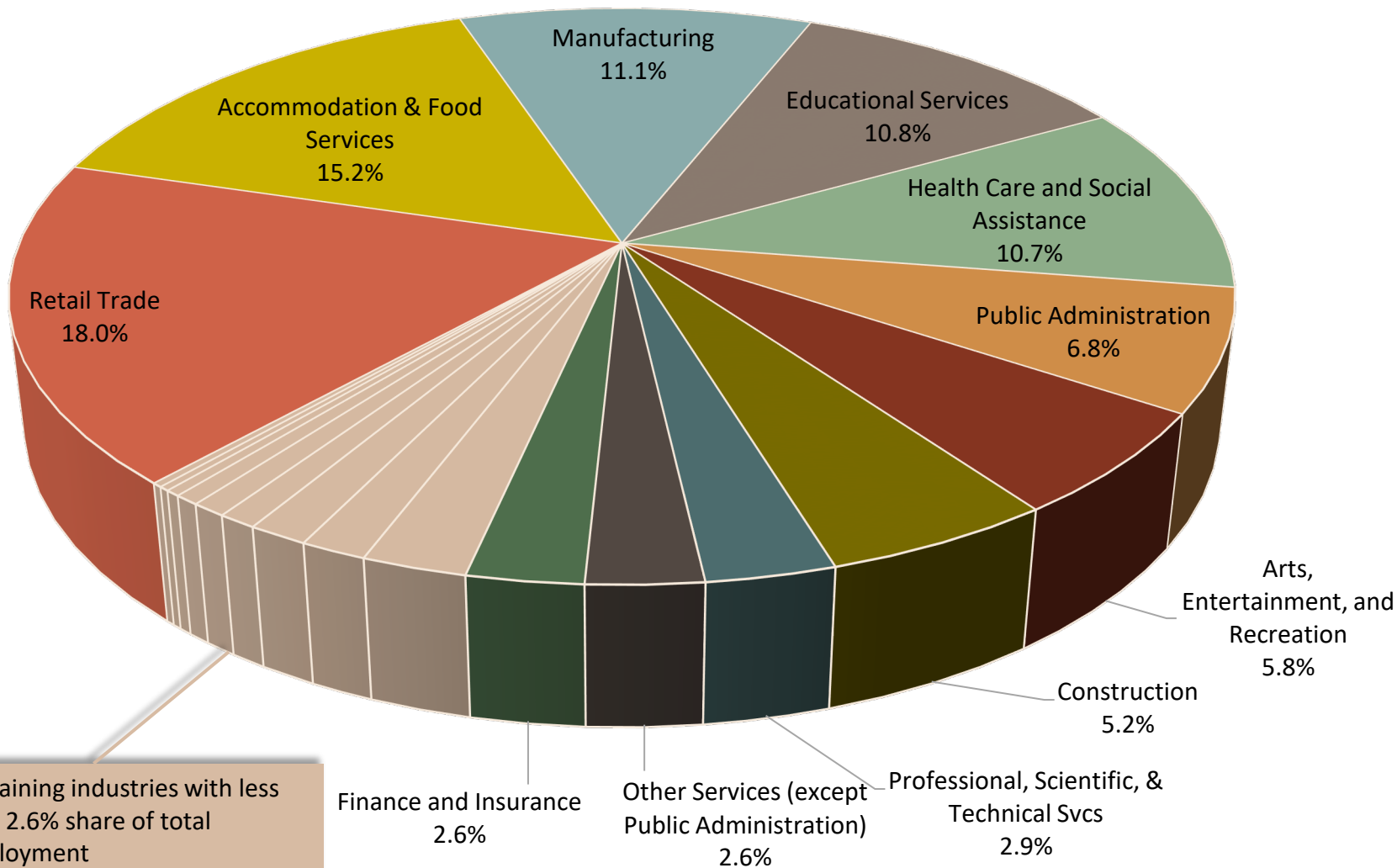
2022 Commuting Patterns

Where People Work who Live in This County

	Count	Share
Montgomery County, AL	14,168	43.1%
Elmore County, AL	7,367	22.4%
Jefferson County, AL	1,976	6.0%
Autauga County, AL	1,736	5.3%
Lee County, AL	763	2.3%
Shelby County, AL	675	2.1%
Tallapoosa County, AL	541	1.6%
Madison County, AL	426	1.3%
Mobile County, AL	382	1.2%
Tuscaloosa County, AL	369	1.1%
All Other Locations	4,507	13.7%

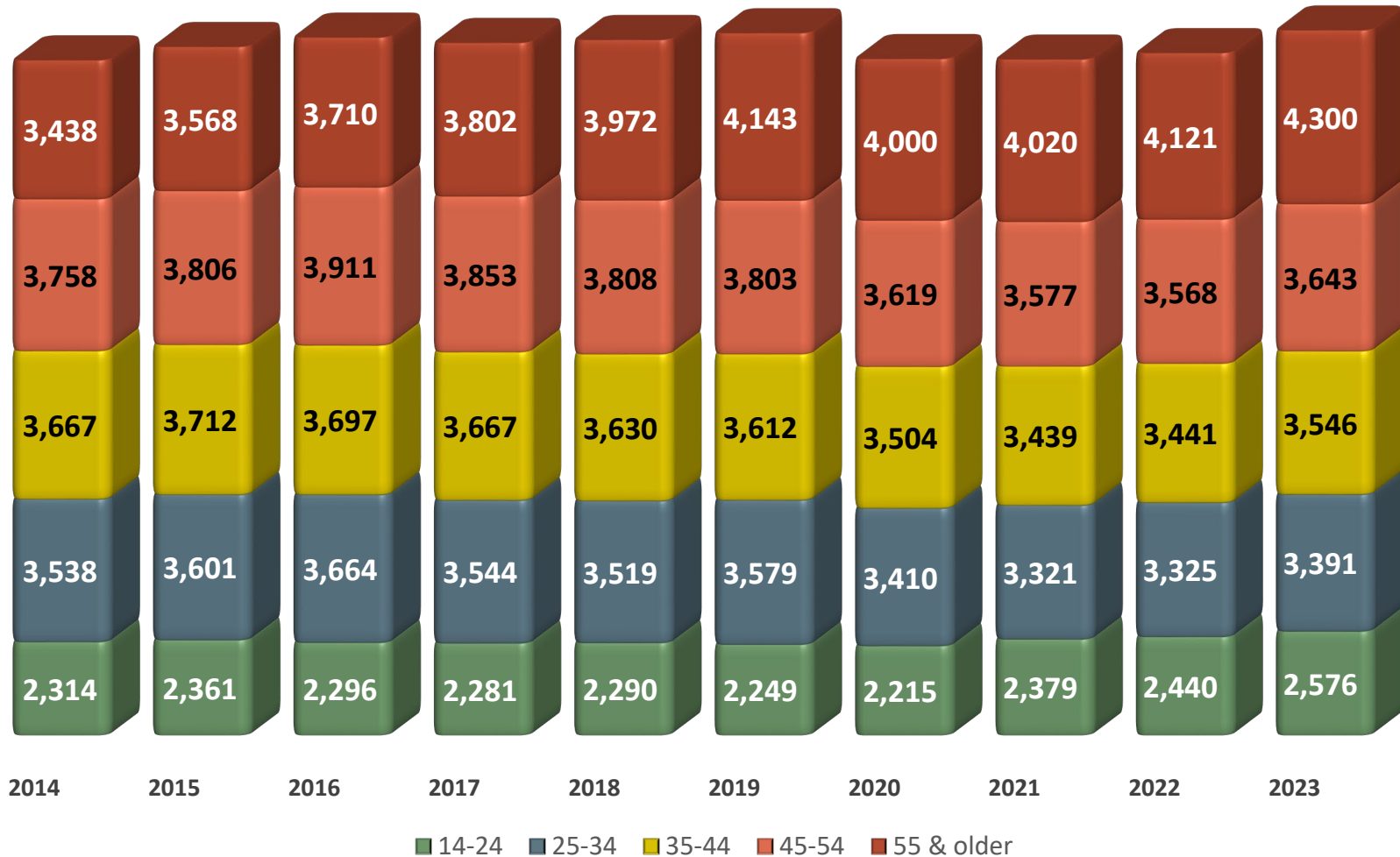


Elmore County Industry Distribution 2023

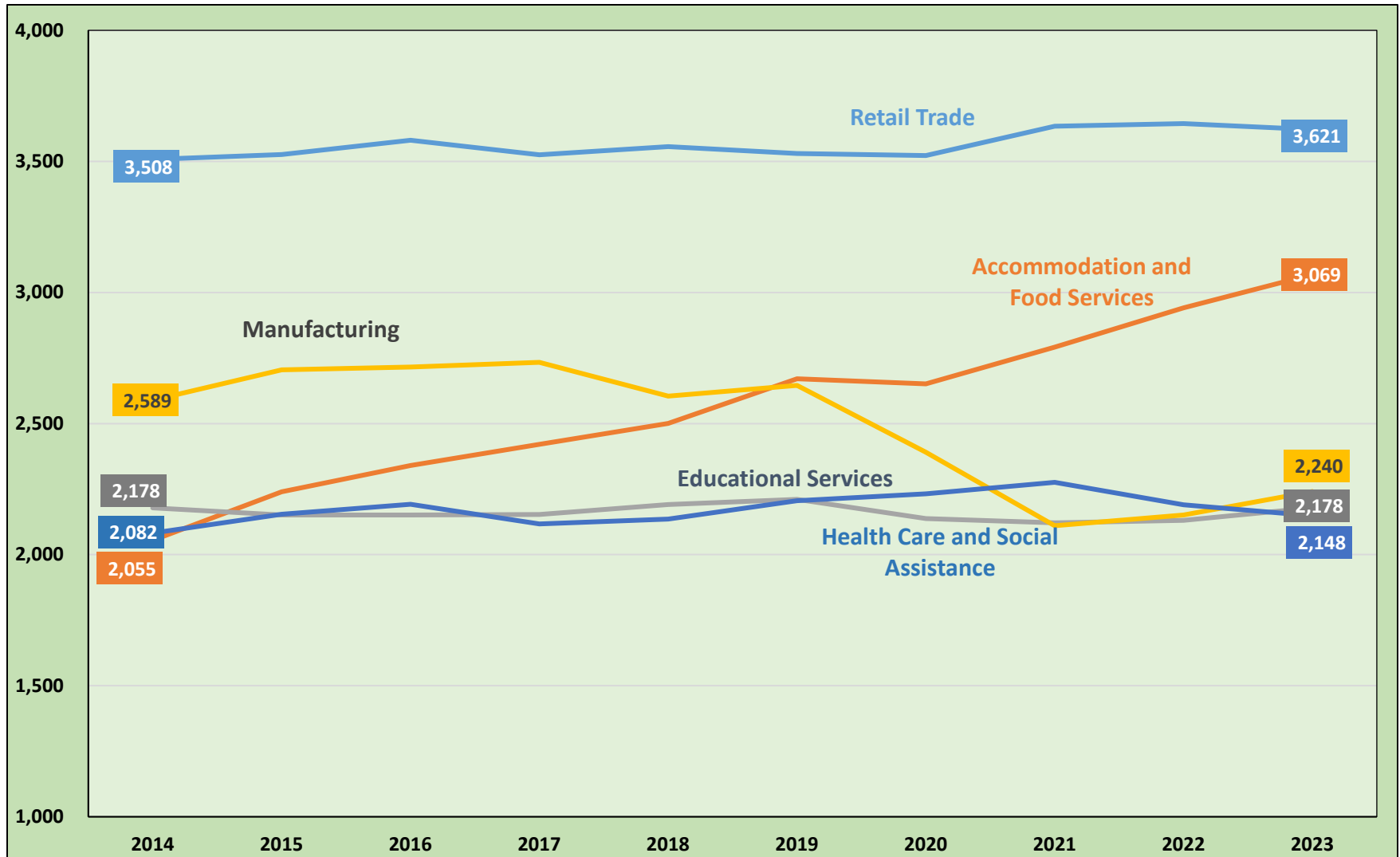


Employment by Age Group

Total All Industries

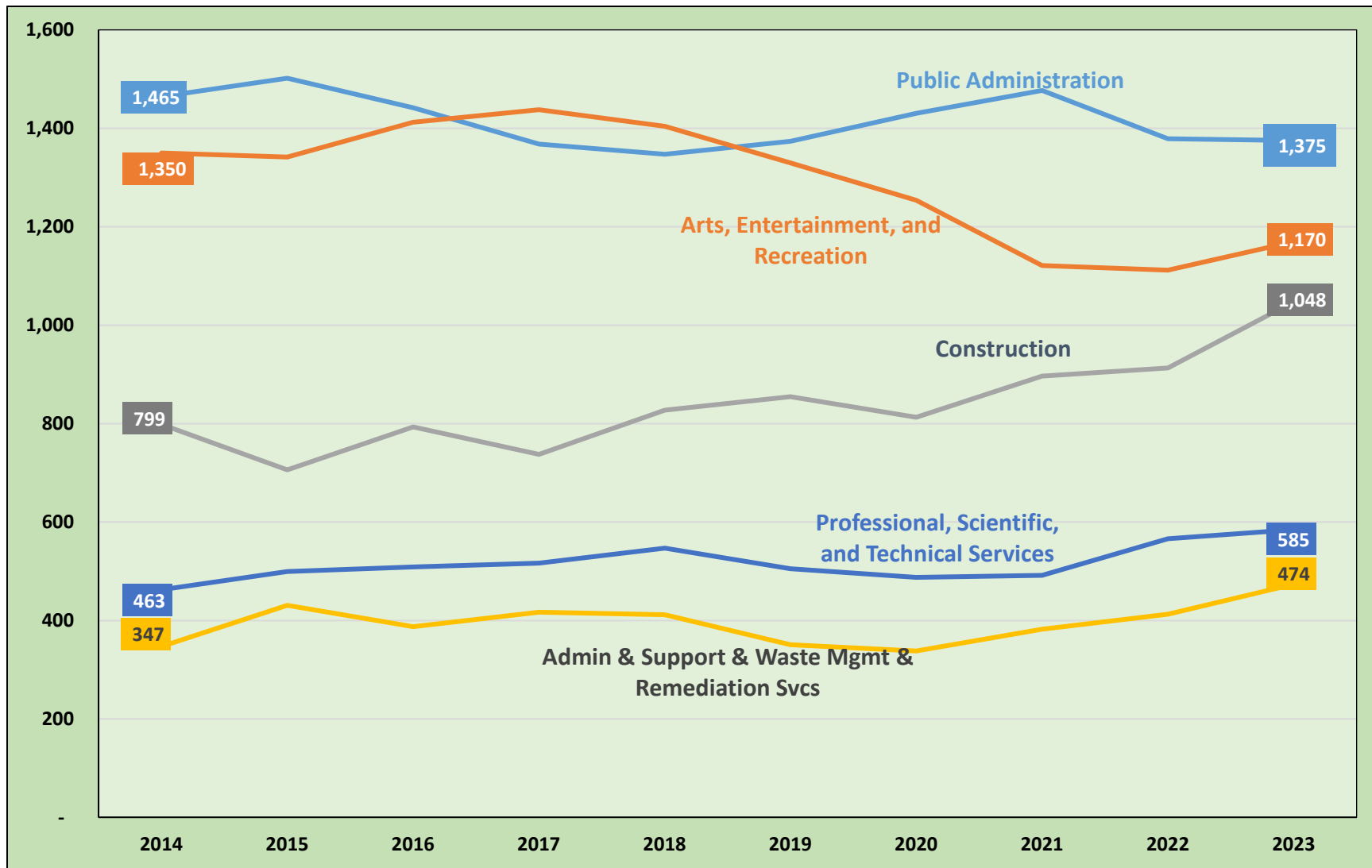


Industry Sector Employment Trends



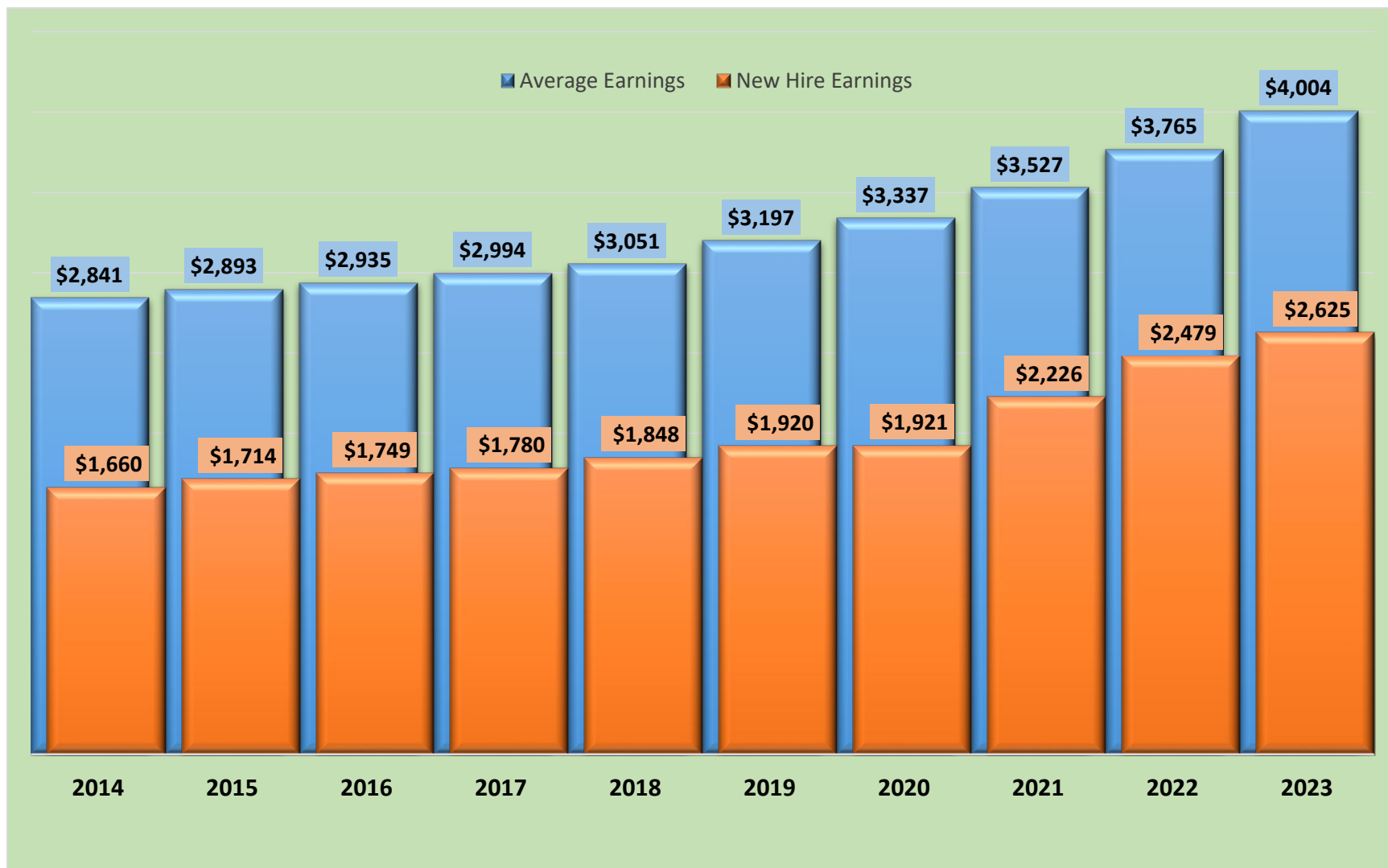
Source: Longitudinal Employer Household Dynamics program which is a partnership between the Census Bureau and the Alabama Department of Workforce, Labor Market Information Division.

Industry Sector Employment Trends



Source: Longitudinal Employer Household Dynamics program which is a partnership between the Census Bureau and the Alabama Department of Workforce, Labor Market Information Division.

Average Monthly Earnings Trend



Postsecondary Education

HS Graduates Enrolled in Alabama Public Colleges Fall 2024

High School	HS Grads	Enrolled in AL Public Colleges	Enrolled in Remedial Course(s)				Enrollment Status	
			Math Only	English Only	Both	Total	Full Time	Part Time/ Other
EDGE Virtual School	76	10	0	0	1	1	10	0
Elmore County High School	106	54	6	2	2	10	47	7
Holtville High School	136	69	7	1	2	10	62	7
Stanhope Elmore High School	214	100	10	12	4	26	89	11
Tallassee High School	114	51	7	4	1	12	47	4
Wetumpka High School	271	138	13	10	4	27	132	6

Postsecondary Education

Fall 2024 Undergraduate Enrollment of Students Attending Alabama Public Two-Year and Four-Year Institutions

Elmore County		# Undergrads	# First-Time Freshman
Major	Grand Total	2,987	648
	General Studies	417	155
	Registered Nursing/Registered Nurse	279	55
	Undeclared	266	5
	Liberal Arts and Sciences/Liberal Studies	187	13
	Business Administration and Management, General	114	22
	Psychology, General	74	11
	Computer and Information Sciences, General	71	16
	Multi-/Interdisciplinary Studies, Other	66	12
	Biology/Biological Sciences, General	65	15
	Elementary Education and Teaching	54	10
	Accounting	43	4
	Criminal Justice/Safety Studies	40	13
	Exercise Science and Kinesiology	40	9
	Computer Science	37	7
	Welding Technology/Welder	36	15

Postsecondary Education

Summer 2023 thru Spring 2024 Completions of Students from Alabama Public Two-Year and Four-Year Institutions

Major	Less than 1 year	Less than 2 years	Associate	Less than 4 years	Bachelor	Post-Bachelor	Master	Post-Master	Doctoral	Elmore Total	* State Totals
Registered Nursing/Registered Nurse	-	-	36	-	31	-	11	-	-	78	3,947
General Studies	30	-	36	-	1	-	-	-	-	67	6,081
Heating, Air Conditioning, Ventilation and Refrigeration Maintenance Technology/Technician	55	5	-	-	-	-	-	-	-	60	360
Welding Technology/Welder	55	4	-	-	-	-	-	-	-	59	1,280
Barbering/Barber	49	8	-	-	-	-	-	-	-	57	193
Logistics, Materials, and Supply Chain Management	44	5	-	-	-	-	1	-	-	50	311
Business Administration and Management, General	2	1	3	-	27	-	12	-	-	45	2,265
Computer and Information Sciences, General	20	1	14	-	3	-	-	-	-	38	1,429
Diesel Mechanics Technology/Technician	34	4	-	-	-	-	-	-	-	38	191
Administrative Assistant and Secretarial Science, General	24	2	1	-	-	-	-	-	-	27	440
Accounting	-	-	-	-	16	-	9	-	-	25	793
Industrial Mechanics and Maintenance Technology/Technician	20	-	2	-	-	-	-	-	-	22	630
Plumbing Technology/Plumber	20	2	-	-	-	-	-	-	-	22	65
Carpentry/Carpenter	17	2	-	-	-	-	-	-	-	19	307
Cosmetology/Cosmetologist, General	15	3	-	-	-	-	-	-	-	18	337

Questions???

Alabama Department of Workforce
Labor Market Information Division
LMI.LABOR@labor.Alabama.gov