

# Blount County Profile

Alabama Department of Workforce  
Labor Market Information Division

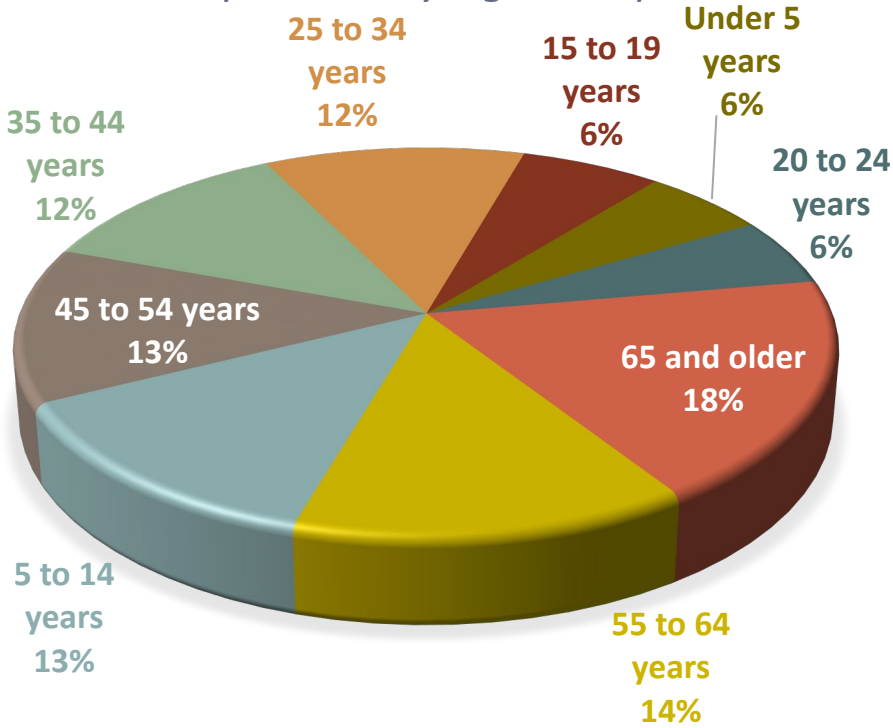
# Demographics

American Community Survey Average Population Estimates for 2019-2023

Age	Estimate
Under 5 years	3,397
5 to 14 years	7,760
15 to 19 years	3,810
20 to 24 years	3,334
25 to 34 years	7,023
35 to 44 years	7,118
45 to 54 years	7,676
55 to 64 years	8,155
65 and older	11,019

*Total Population*  
**59,292**

*Population By Age Group:*



Source: U.S. Census Bureau, 2019-2023 5-Year American Community Survey Table DP05: Demographic and Housing Estimates

# Demographics

## American Community Survey Average Population Estimates for 2019-2023

School Enrollment	Estimate
Population 3 years and over enrolled in school	13,109
Nursery school, preschool	647
Kindergarten	620
Elementary school (grades 1-8)	6,513
High school (grades 9-12)	3,309
College or graduate school	2,020
Educational Attainment	Estimate
Population 25 years and over	40,991
Less than 9 <sup>th</sup> grade	2,598
9 <sup>th</sup> to 12 <sup>th</sup> grade, no diploma	4,495
High school graduate (includes equivalency)	14,600
Some college, no degree	8,391
Associate's degree	4,521
Bachelor's degree	4,088
Graduate or professional degree	2,298

# Unemployment Data

## November 2024 Unemployment & Underemployment Data

County	Civilian Labor Force	Employment	Unemployment	Unemployment Rate	Under-Employment	Available Labor Pool
<b>Blount</b>	<b>26,414</b>	<b>25,629</b>	<b>785</b>	<b>2.9%</b>	<b>5,638</b>	<b>6,423</b>
Chilton	20,689	20,102	587	2.7%	3,297	3,884
Jefferson	331,449	320,313	11,136	3.2%	57,977	69,113
St. Clair	43,213	41,987	1,226	2.8%	6,004	7,230
Shelby	124,349	121,168	3,181	2.4%	19,872	23,053
Walker	26,216	25,298	918	3.4%	6,400	7,318

**Unemployment + Underemployment = Potential Available Labor Pool**

Source: LAUS data, County Unemployment Rates, Unemployment Data for Labor Force, Employment, Unemployment, and Unemployment Rate Data.  
 Underemployment in Alabama WIA Areas, Published September 2023, CBER @ UA, Underemployment and Available Labor Pool Data.

# Unemployment Data

## Initial Claims by Occupation 2024, Annual

Occupation	Number Unemployed	Occupation	Number Unemployed
Management Occupations	25	Medical Assistants	8
General and Operations Managers	23	Sales Managers	8
Cashiers	21	Shipping, Receiving, and Traffic Clerks	8
Customer Service Representatives	20	Waiters and Waitresses	8
Office Clerks, General	15	Accountants and Auditors	7
Construction Laborers	13	Brickmasons and Blockmasons	7
Helpers--Production Workers	12	Electricians	7
Laborers and Freight, Stock, and Material Movers, Hand	12	Industrial Truck and Tractor Operators	7
Receptionists and Information Clerks	12	Personal Care Aides	7
Stockers and Order Fillers	11	Registered Nurses	7
Heavy and Tractor-Trailer Truck Drivers	9	Retail Sales Workers	7
Maids and Housekeeping Cleaners	9	Team Assemblers	7
Packaging and Filling Machine Operators and Tenders	9	Bookkeeping, Accounting, and Auditing Clerks	6
Production Workers, All Other	9	Construction Equipment Operators	6
Retail Salespersons	9	Construction Trades Workers	6



# Help Wanted OnLine<sup>®</sup> Annual Job Postings

## 2024 Top Occupations with Most Ads Posted

Occupation	# of Ads	Occupation	# of Ads
Registered Nurses	63	Licensed Practical & Vocational Nurses	17
Fast Food and Counter Workers	54	Postal Service Clerks	17
Supervisors of Retail Sales Workers	46	Heavy and Tractor-Trailer Truck Drivers	17
Food Service Managers	43	Personal Care Aides	16
Retail Salespersons	37	General and Operations Managers	15
Maintenance and Repair Workers, General	24	Driver/Sales Workers	13
Cooks, Restaurant	23	Physical Therapists	12
Nurse Practitioners	22	Emergency Medical Technicians	11
Nursing Assistants	22	Pharmacy Technicians	11
Merchandise Displayers and Window Trimmers	21	Secretaries and Administrative Assistants, Except Legal, Medical, and Executive	11
Chief Executives	20	Secondary School Teachers, Except Special and Career/Technical Education	10
Production Workers, All Other	20	Medical Assistants	10
Radiologic Technologists and Technicians	18	Cashiers	10
Customer Service Representatives	18	Supervisors of Office and Administrative Support Workers	9
Supervisors of Production and Operating Workers	18	Laborers and Freight, Stock, and Material Movers, Hand	9



# Expected Worker Shortfall

	2022-2032	2022-2040	2022-2045
Total Population Growth	0.8%	0.4%	-0.4%
Age 20-64 Population Growth	-1.9%	-3.6%	-5.2%
Nonagricultural Job Growth	8.1%	9.7%	10.5%
Worker Shortfall	10.0%	13.4%	15.6%
<b>Worker Shortfall</b>	<b>954</b>	<b>1,271</b>	<b>1,486</b>

Note: A negative Worker Shortfall indicates a projected surplus of workers versus available jobs.

# Occupational Wages

## Blount County Average Hourly Wage All Occupations

Entry	Median	Mean	Experienced
\$12.92	\$19.11	\$23.76	\$29.18

## Blount County Average Hourly Wage Manufacturing

Entry	Median	Mean	Experienced
\$16.37	\$18.73	\$23.58	\$27.18

Source: Alabama Department of Workforce, Labor Market Information Division in cooperation with the U.S. Bureau of Labor Statistics. The data is based on the 2024 release of the Occupational Employment Statistics report, employment and wage estimate file. Wage data has been aged using the latest quarterly Employment Cost Index (ECI) factors. 'NA' indicates data not available for publication.

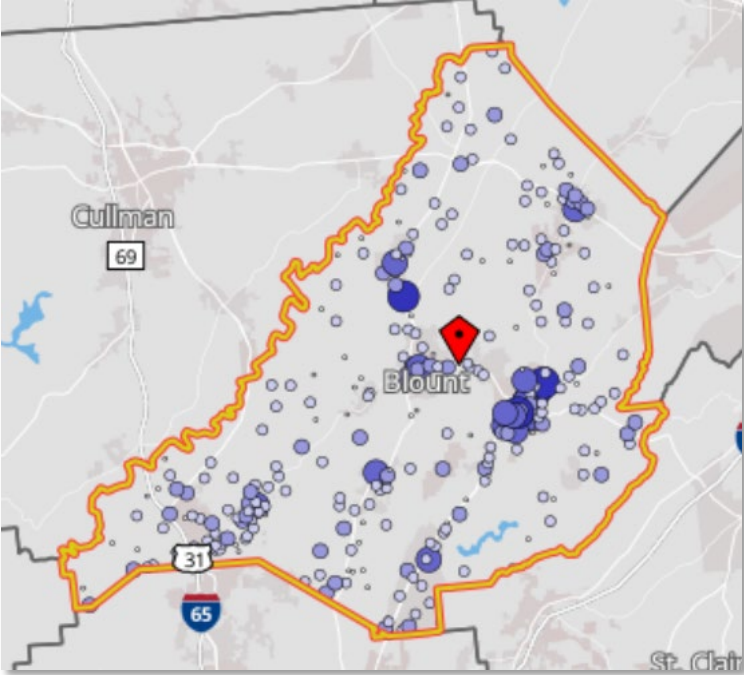
# Occupational Wages

## Annual Salary Area Comparison

	Entry	Median	Mean	Experienced
<b>Alabama</b>				
Total	\$27,814	\$45,371	\$57,292	\$72,030
Manufacturing	\$33,704	\$48,848	\$58,571	\$71,005
<b>Blount County</b>				
Total	\$26,878	\$39,737	\$49,422	\$60,693
Manufacturing	\$34,036	\$38,947	\$49,040	\$56,541
<b>Jefferson County</b>				
Total	\$30,200	\$48,936	\$62,222	\$78,233
Manufacturing	\$36,500	\$49,876	\$59,395	\$70,843
<b>Cullman County</b>				
Total	\$26,138	\$40,542	\$49,063	\$60,525
Manufacturing	\$33,020	\$44,253	\$51,258	\$60,377

Source: Alabama Department of Workforce, Labor Market Information Division in cooperation with the U.S. Bureau of Labor Statistics. The data is based on the 2024 release of the Occupational Employment Statistics report, employment and wage estimate file. Wage data has been aged using the latest quarterly Employment Cost Index (ECI) factors. 'NA' indicates data not available for publication.

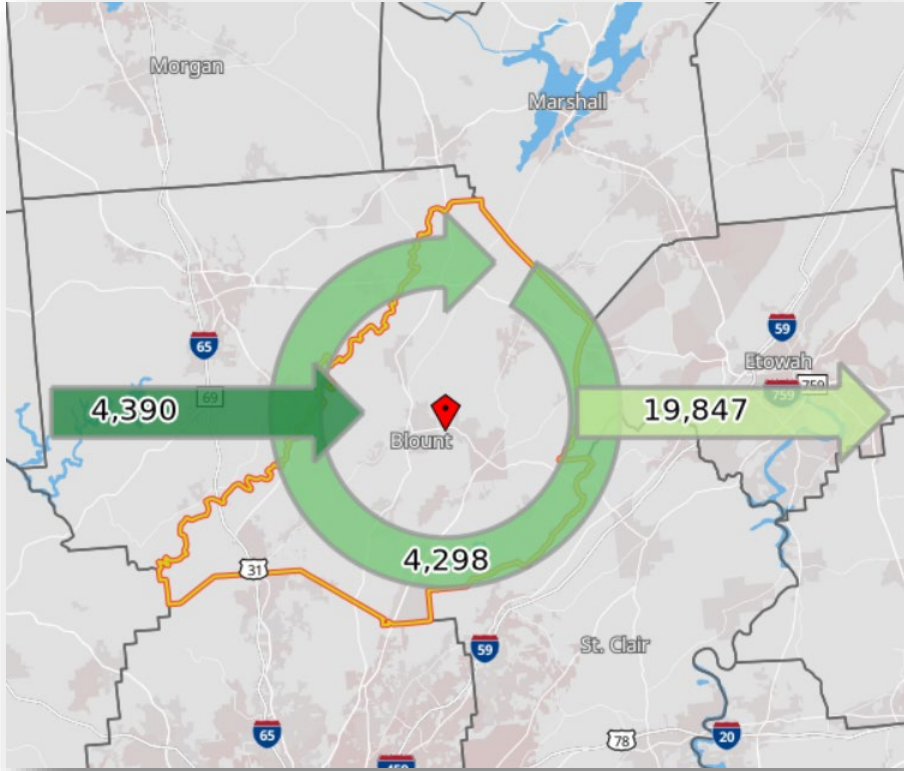
# 2022 Workforce Characteristics



Jobs by Worker Age	Count	Share
Age 29 or younger	2,049	23.6%
Age 30 to 54	4,547	52.3%
Age 55 or older	2,092	24.1%
Jobs by Worker Educational Attainment	Count	Share
Less than high school	947	10.9%
High school or equivalent, no college	2,098	24.1%
Some college or Associate degree	2,177	25.1%
Bachelor's degree or advanced degree	1,417	16.3%
Educational attainment not available (workers aged 29 or younger)	2,049	23.6%
Jobs by Worker Sex	Count	Share
Male	4,158	47.9%
Female	4,530	52.1%
Jobs by Earnings	Count	Share
\$1,250 per month or less	1,569	18.1%
\$1,251 to \$3,333 per month	3,186	36.7%
More than \$3,333 per month	3,933	45.3%

# 2022 Commuting Patterns

## Labor Force Characteristics



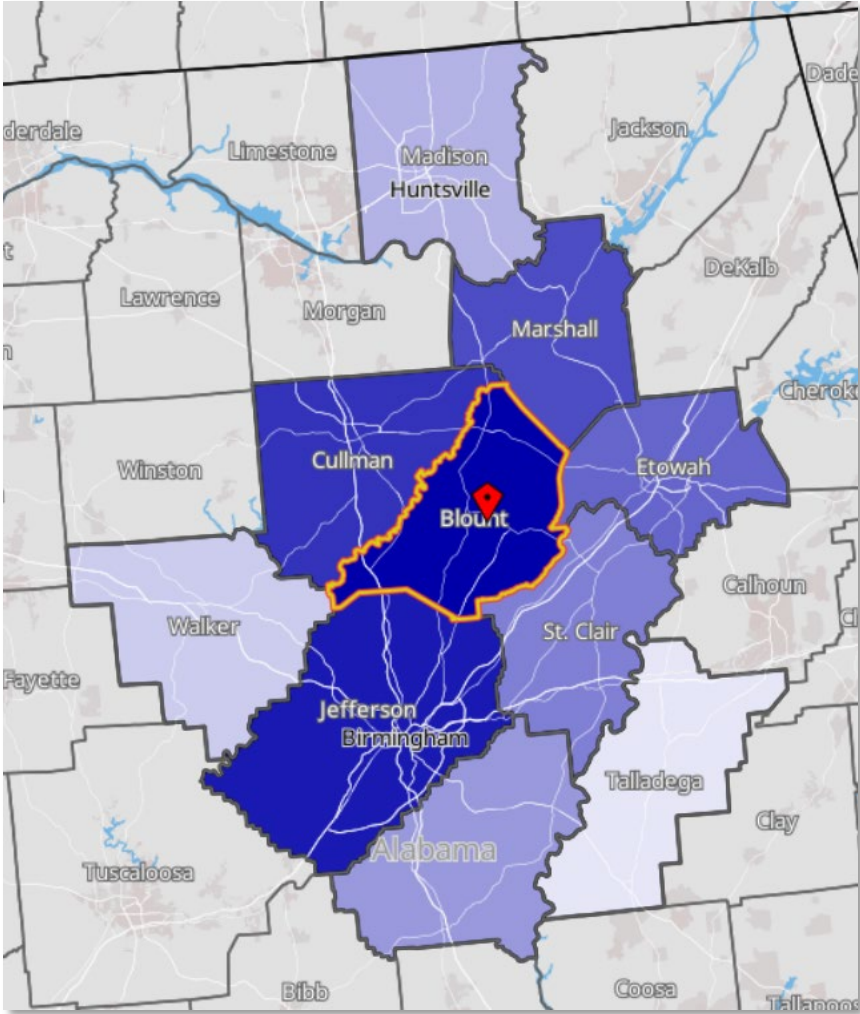
Outflow Job Characteristics	Count	Share
External Jobs Filled by Residents	19,847	100.0%
Workers Aged 29 or younger	4,926	24.8%
Workers Aged 30 to 54	10,417	52.5%
Workers Aged 55 or older	4,504	22.7%
Workers Earning \$1,250 per month or less	2,595	13.1%
Workers Earning \$1,251 to \$3,333 per month	5,487	27.6%
Workers Earning More than \$3,333 per month	11,765	59.3%
Workers in the "Goods Producing" Industry Class	4,596	23.2%
Workers in the "Trade, Transportation, and Utilities" Industry Class	4,951	24.9%
Workers in the "All Other Services" Industry Class	10,300	51.9%

<p>Live in the County but Work Elsewhere 69.6%</p>	<p>Live Elsewhere but Work in the County 15.4%</p>	<p>Live and Work in the County 15.1%</p>
--	--	--

Source: U.S. Census Bureau, OnTheMap Application and LEHD Origin-Destination Employment Statistics in Partnership with the Alabama Department of Workforce, Labor Market Information Division.

# 2022 Commuting Patterns

Where People Live who Work in This County



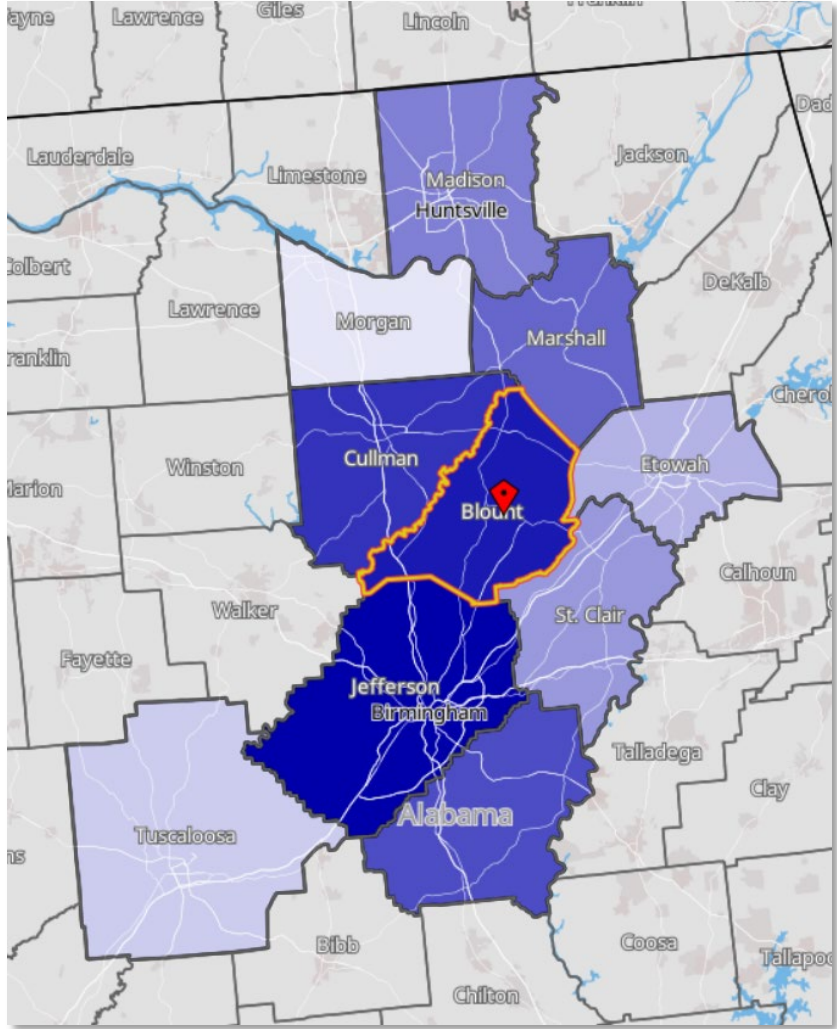
	Count	Share
Blount County, AL	4,298	49.5%
Jefferson County, AL	938	10.8%
Cullman County, AL	527	6.1%
Marshall County, AL	411	4.7%
Etowah County, AL	350	4.0%
St. Clair County, AL	330	3.8%
Shelby County, AL	158	1.8%
Madison County, AL	155	1.8%
Walker County, AL	148	1.7%
Talladega County, AL	114	1.3%
All Other Locations	1,259	14.5%

Source: U.S. Census Bureau, OnTheMap Application and LEHD Origin-Destination Employment Statistics in Partnership with the Alabama Department of Workforce, Labor Market Information Division.

# 2022 Commuting Patterns

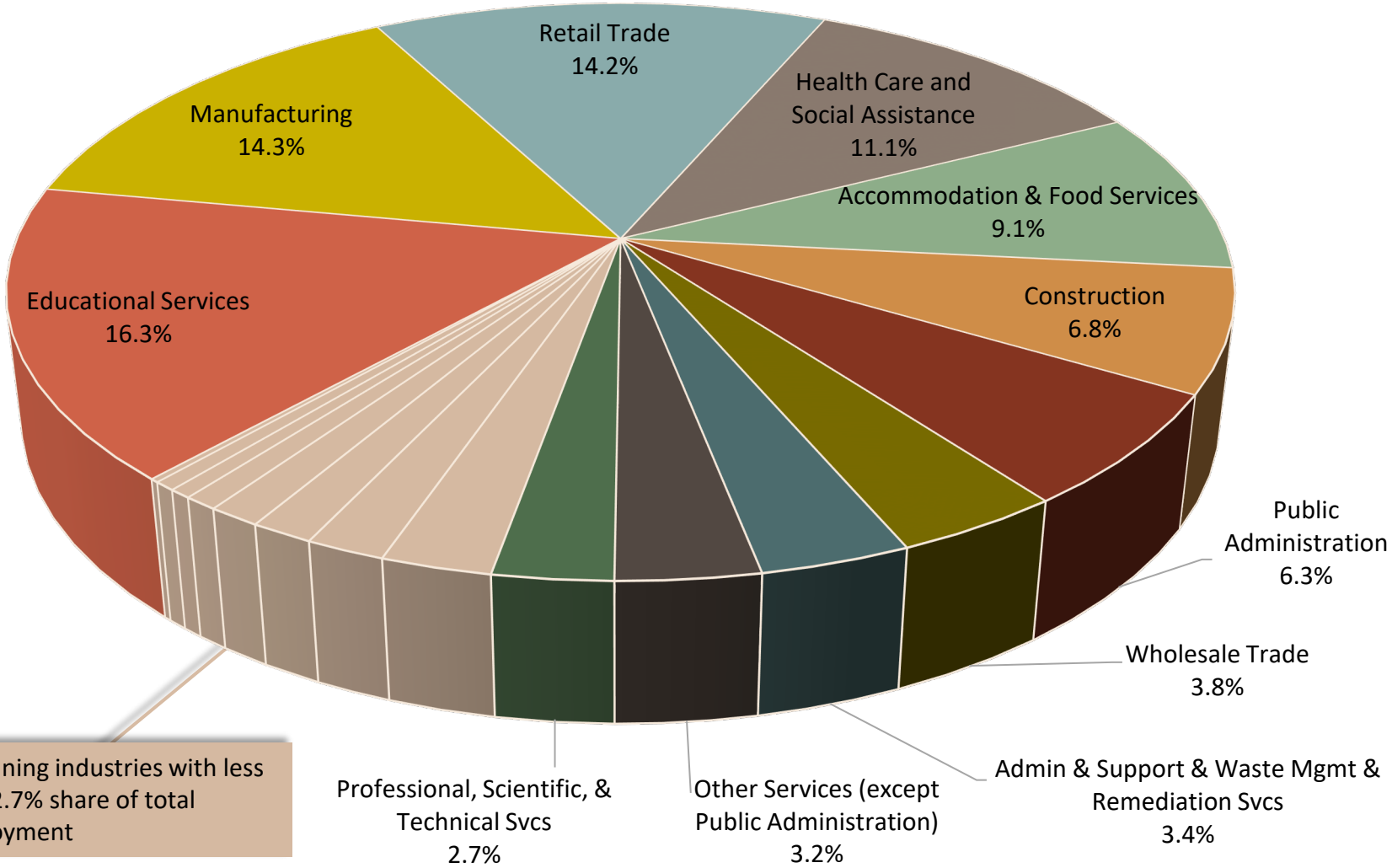
Where People Work who Live in This County

	Count	Share
Jefferson County, AL	9,685	40.1%
Blount County, AL	4,298	17.8%
Cullman County, AL	1,439	6.0%
Shelby County, AL	1,234	5.1%
Marshall County, AL	1,123	4.7%
Madison County, AL	1,057	4.4%
St. Clair County, AL	568	2.4%
Etowah County, AL	524	2.2%
Tuscaloosa County, AL	446	1.8%
Morgan County, AL	432	1.8%
All Other Locations	3,339	13.8%



Source: U.S. Census Bureau, OnTheMap Application and LEHD Origin-Destination Employment Statistics in Partnership with the Alabama Department of Workforce, Labor Market Information Division.

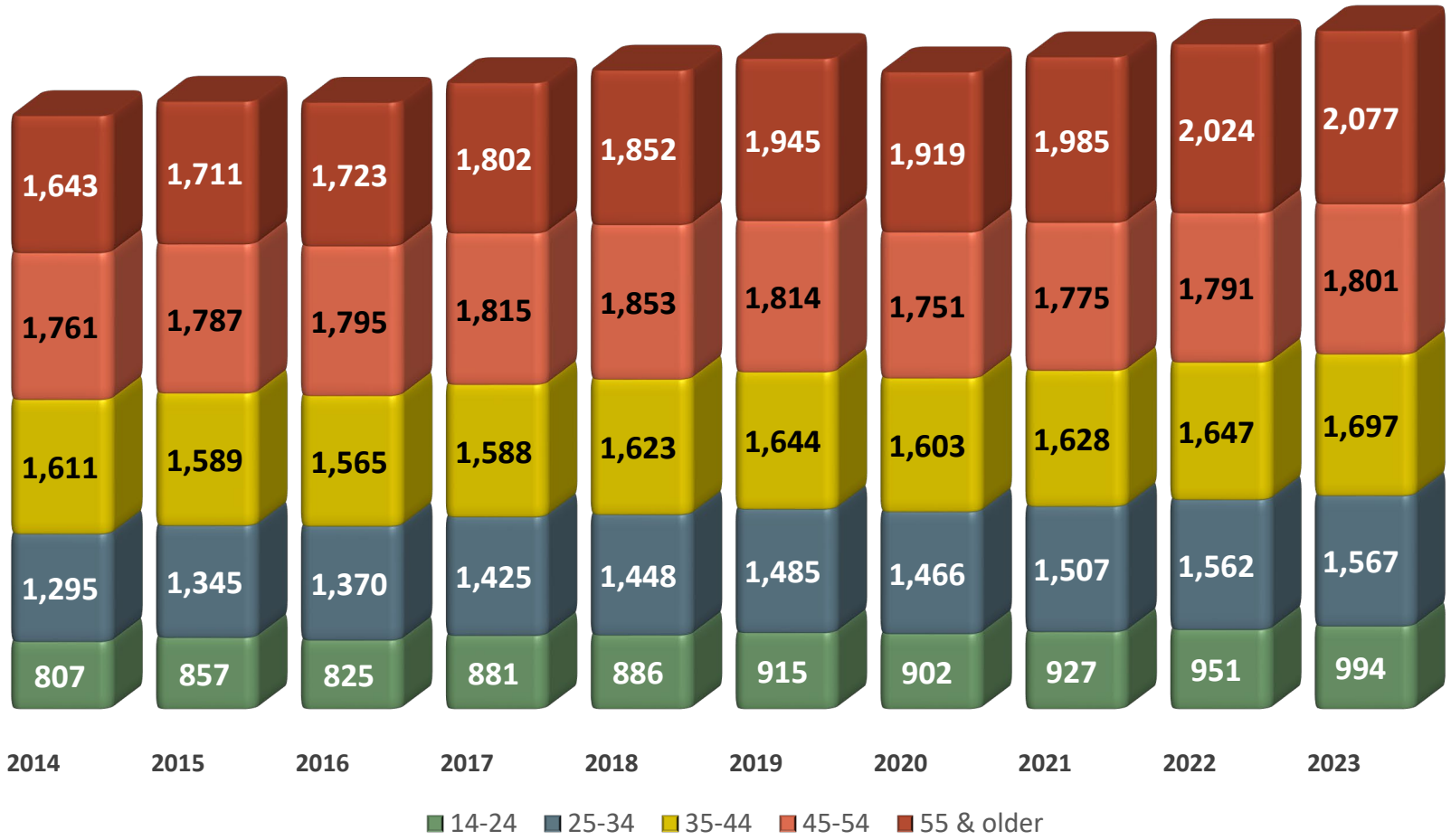
# Blount County Industry Distribution 2023



Source: Longitudinal Employer Household Dynamics program which is a partnership between the Census Bureau and the Alabama Department of Workforce, Labor Market Information Division.

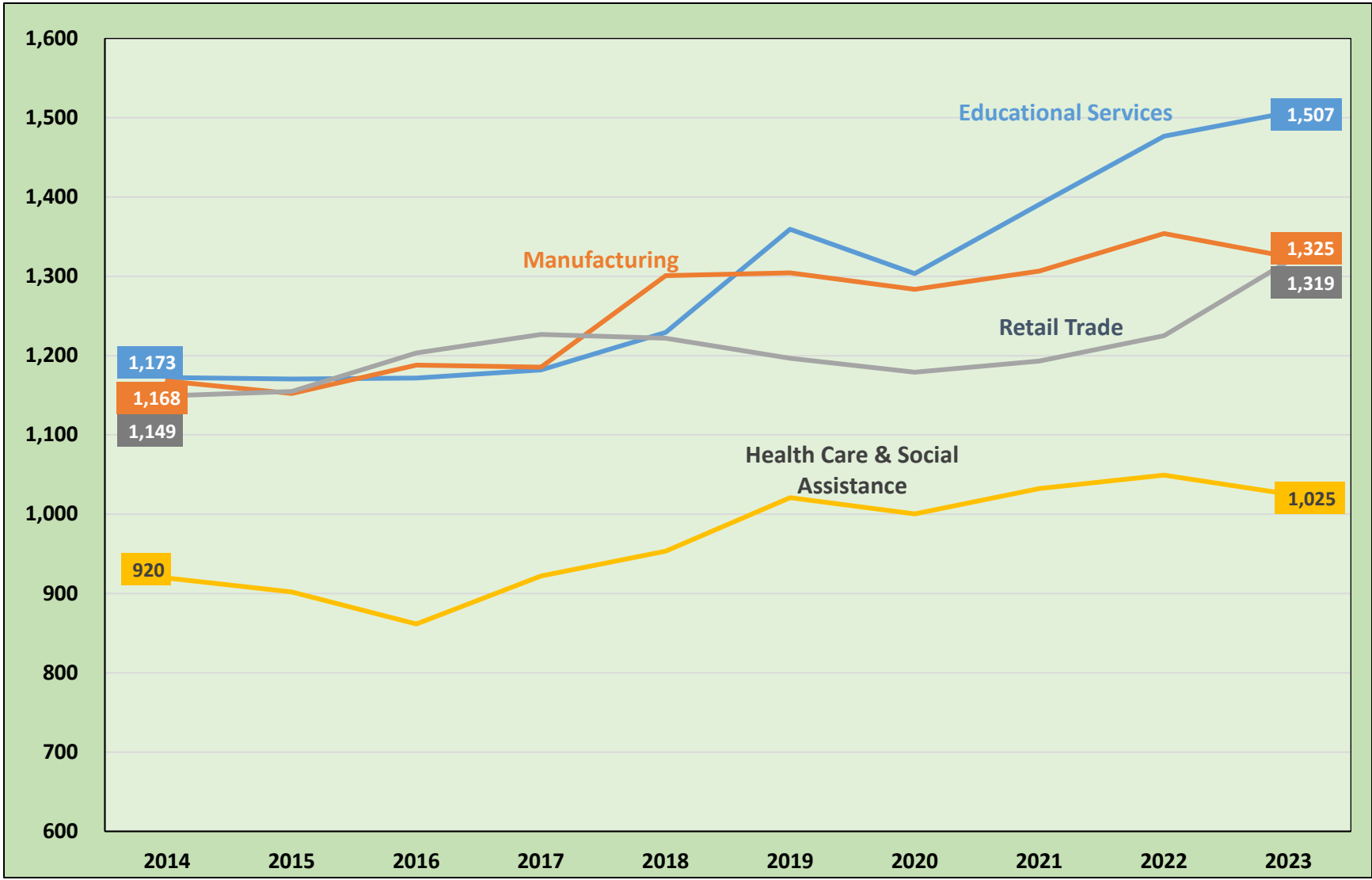
# Employment by Age Group

## Total All Industries



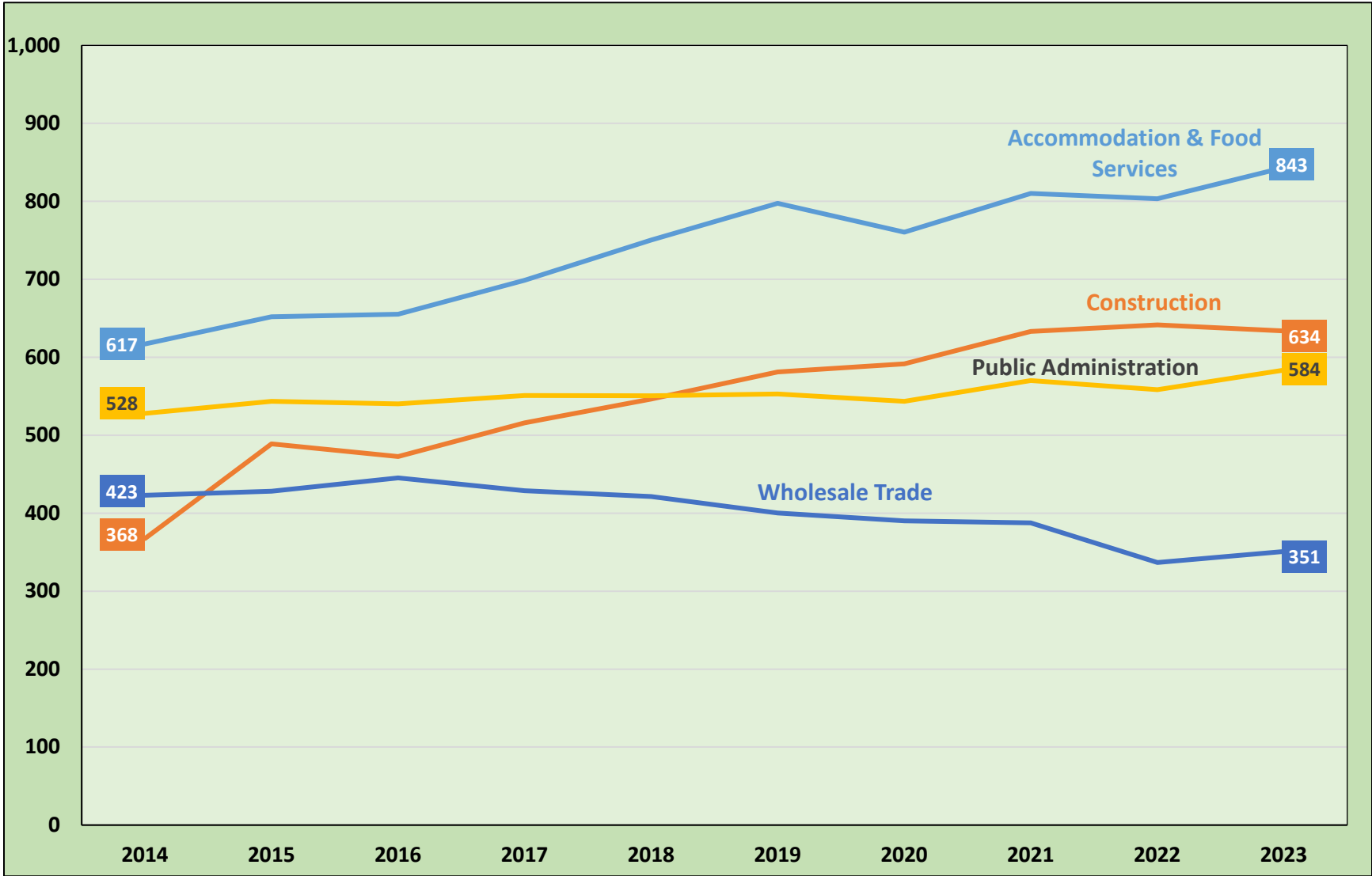
Source: Longitudinal Employer Household Dynamics program which is a partnership between the Census Bureau and the Alabama Department of Workforce, Labor Market Information Division.

# Industry Sector Employment Trends



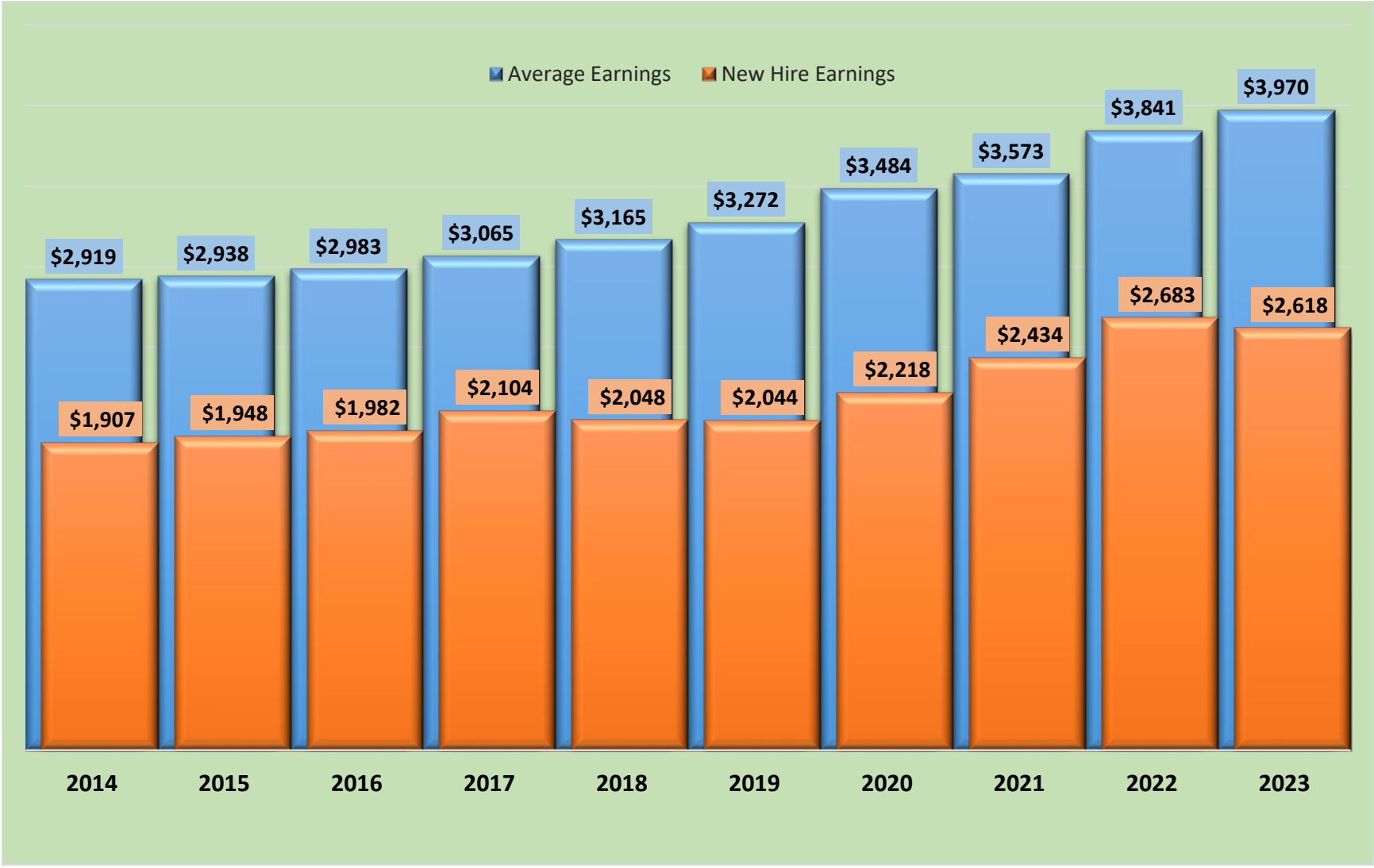
Source: Longitudinal Employer Household Dynamics program which is a partnership between the Census Bureau and the Alabama Department of Workforce, Labor Market Information Division.

# Industry Sector Employment Trends



Source: Longitudinal Employer Household Dynamics program which is a partnership between the Census Bureau and the Alabama Department of Workforce, Labor Market Information Division.

# Average Monthly Earnings Trend



Source: Longitudinal Employer Household Dynamics program which is a partnership between the Census Bureau and the Alabama Department of Workforce, Labor Market Information Division.

# Postsecondary Education

## HS Graduates Enrolled in Alabama Public Colleges Fall 2024

High School	HS Grads	Enrolled in AL Public Colleges	Enrolled in Remedial Course(s)				Enrollment Status	
			Math Only	English Only	Both	Total	Full Time	Part Time/Other
Appalachian School	34	8	0	0	0	0	6	2
Cleveland High School	39	16	0	0	0	0	14	2
Hayden High School	140	59	7	2	1	10	52	7
JB Pennington High School	72	34	3	1	2	6	29	5
Locust Fork High School	64	25	2	1	1	4	24	1
Oneonta High School	113	66	7	2	0	9	59	7
Southeastern School	67	21	2	2	0	4	16	5
Susan Moore High School	75	28	6	1	0	7	26	2

# Postsecondary Education

## Fall 2024 Undergraduate Enrollment of Students Attending Alabama Public Two-Year and Four-Year Institutions

Blount County		# Undergrads	# First-Time Freshman
<b>Major</b>	<b>Grand Total</b>	<b>1,507</b>	<b>285</b>
	General Studies	435	84
	Registered Nursing/Registered Nurse	156	28
	Undeclared	56	2
	Mechanics and Repairers, General	43	10
	Business Administration and Management, General	40	5
	Radiologic Technology/Science - Radiographer	34	7
	Biology/Biological Sciences, General	30	7
	Computer and Information Sciences, General	30	7
	Diagnostic Medical Sonography/Sonographer and Ultrasound Technician	29	14
	Elementary Education and Teaching	29	1
	Office Management and Supervision	25	11
	Psychology, General	21	7
	Accounting	20	1
	Engineering Technologies/Technicians, General	20	8
	Liberal Arts and Sciences/Liberal Studies	17	5

# Postsecondary Education

Summer 2023 thru Spring 2024 Completions of Students from Alabama Public Two-Year and Four-Year Institutions

Major	Less than 1 year	Less than 2 years	Associate	Less than 4 years	Bachelor	Post-Bachelor	Master	Post-Master	Doctoral	Blount Total	* State Totals
General Studies	15	-	56	-	2	-	-	-	-	73	6,081
Multi-/Interdisciplinary Studies, Other	63	-	-	-	4	-	-	-	-	67	1,155
Registered Nursing/Registered Nurse	-	-	27	-	17	-	6	1	-	51	3,947
Computer and Information Sciences, General	19	-	5	-	2	-	-	-	-	26	1,429
Licensed Practical/Vocational Nurse Training	-	19	-	-	-	-	-	-	-	19	1,501
Business Administration and Management, General	-	-	-	-	10	-	7	-	-	17	2,265
Industrial Electronics Technology/Technician	13	2	2	-	-	-	-	-	-	17	446
Heating, Ventilation, Air Conditioning and Refrigeration Engineering Technology/Technician	12	3	-	-	-	-	-	-	-	15	395
Health Information/Medical Records Technology/Technician	4	7	3	-	-	-	-	-	-	14	129
Salon/Beauty Salon Management/Manager	-	7	6	-	-	-	-	-	-	13	398
Engineering Technologies/Technicians, General	10	-	2	-	-	-	-	-	-	12	254
Emergency Medical Technology/Technician (EMT Paramedic)	11	-	-	-	-	-	-	-	-	11	782
Welding Technology/Welder	10	1	-	-	-	-	-	-	-	11	1,280
Accounting	-	-	-	-	8	-	2	-	-	10	793
Administrative Assistant and Secretarial Science	7	-	2	-	-	-	-	-	-	9	440

► Source: Alabama Commission on Higher Education: Workforce Development, Potential Workforce by County.

# Questions???

Alabama Department of Workforce  
Labor Market Information Division  
[LMI.LABOR@labor.Alabama.gov](mailto:LMI.LABOR@labor.Alabama.gov)