

Alabama

Labor Market Information News

Table of Contents

Economic Brief	1
LMI Definitions	2
Consumer Price Index	6
Current Employment Statistics	
Employment	3-5, 7-14
Hours and Earnings	6
Local Area Unemployment Statistics	15-19
Release Schedule	20
Technical Support	20

June 2025
Publication



Economic Brief

Alabama's seasonally adjusted labor force participation rate, at 58.0 percent in May, was unchanged from the revised April 2025 estimate of 58.0 percent and higher than 57.4 percent recorded in May 2024. The civilian labor force was 2,384,601 in May, compared to 2,380,386 in April 2025 and 2,339,921 a year ago.

	Not Seasonally Adjusted			Seasonally Adjusted		
	May p 2025	Apr r 2025	May r 2024	May p 2025	Apr r 2025	May r 2024
Civilian Labor Force ¹	2,384,336	2,400,498	2,330,749	2,384,601	2,380,386	2,339,921
Employment	2,318,327	2,334,524	2,274,817	2,306,355	2,301,630	2,272,043
Unemployment	66,009	65,974	55,932	78,246	78,756	67,878
AL Unemployment Rate	2.8	2.7	2.4	3.3	3.3	2.9
AL Labor Force Participation Rate	58.0	58.4	57.2	58.0	58.0	57.4
U.S. Unemployment Rate	4.0	3.9	3.7	4.2	4.2	4.0
U.S. Labor Force Participation Rate	62.3	62.5	62.5	62.4	62.6	62.6
Wage and Salary Employment ²	2,217,600	2,216,600	2,194,500	2,215,800	2,215,400	2,189,900

¹ Place of residence basis. ² Place of work basis. ^P Preliminary. ^R Revised.

Estimates prepared by the Alabama Department of Workforce in cooperation with the Bureau of Labor Statistics, based on a 2024 benchmark.

The similar national labor force participation rate for May, at 62.4 percent, was lower than the 62.6 percent reported the prior month and lower than 62.6 from a year ago.

The State's seasonally adjusted unemployment rate, at 3.3 percent in May, was unchanged from the prior month and higher than 2.9 percent reported a year ago. May's rate represented 78,246 unemployed persons, compared to 78,756 in April 2025 and 67,878 in May 2024.

The comparable national unemployment rate for May, at 4.2 percent, was unchanged from the prior month and higher than the year ago rate of 4.0 percent.

Alabama's not seasonally adjusted wage and salary employment, totaling 2,217,600 in May, increased 1,000 over the month. Employment gains occurred in leisure and hospitality (+5,500), other services (+900), construction (+800), and government (+700). Annual losses were in professional and business services (-3,700); trade, transportation, and utilities (-1,300); private education and health services (-1,100); manufacturing (-500); mining and logging (-200); and information (-100). Employment was unchanged in financial activities.

Over the past twelve months, total nonagricultural wage and salary employment increased by 23,100. Annual gains were in private education and health services (+6,700); leisure and hospitality (+6,300); government (+5,000); manufacturing (+4,200); trade, transportation, and utilities (+2,300); construction (+2,200); and other services (+2,000). Annual losses were in professional and business services (-5,000), financial activities (-200), information (-200), and mining and logging (-200).



LMI Definitions

American Community Survey (ACS): The ACS is an ongoing survey that provides data every year by giving communities the current information they need to plan investments and services. Information from the survey generates data that help determine how more than \$400 billion in federal and state funds are distributed each year.

Bureau of Labor Statistics (BLS): The Bureau is a division of the U.S. Department of Labor and functions as the principal data gathering agency of the federal government in the field of labor economics. The BLS collects, processes, analyzes and disseminates data relating to employment, unemployment, the labor force, productivity, prices, family expenditures, wages, industrial relations, and occupational safety and health.

Census Tract: A small relatively permanent statistical subdivision of a county delineated by local committees of census data users for the purpose of collecting and presenting census data. It is worth noting that census tract conform to county lines (that is they are always sub-sets of a county), but may not follow zip code lines.

Civilian Labor Force: The civilian labor force comprises the total of all civilians age 16 and older classified as employed or unemployed, or seeking employment. This gives employers a measure of the labor pool.

Consumer Price Index (CPI): A measure of the average change in prices over time for a set group of goods and services. The Bureau of Labor Statistics publishes CPIs for two population groups: (1) for all urban consumers (CPI-U) which covers approximately 80 percent of the total population and (2) for all urban wage earners and clerical workers (CPI-W) which covers 32 percent of the total population. Among the CPI components are the costs of housing, food, transportation, and energy. While the CPI is not technically a cost of living index, it is often used to indicate changes in the cost-of-living.

Current Employment Statistics (CES) Survey: A monthly survey of nonfarm business establishments used to collect nonfarm payroll employment, and worker hours and earnings by industry and area. Through the Federal/State cooperative effort, these data are used to compute current monthly employment, and hours and earnings estimates, by industry, for the nation, the 50 states and the District of Columbia, and over 250 Metropolitan Statistical Areas (MSA's).

Current Population Survey (CPS): A monthly household survey of the civilian non-institutional population of the United States. This BLS survey provides labor market statistics (e.g., employment, unemployment and wages) by industry, occupation, and demographic characteristics. The Bureau of the Census collects data for this survey in cooperation with BLS.

CES Employment: A count of all persons who worked full or part time or received pay from a nonagricultural employer for any part of the pay period that included the 12th day of the month. Because this count comes from a survey of employers, persons who work for two different companies could be counted twice. Therefore, non-farm payroll employment is really a count of the number of jobs rather than the number of persons employed. This count is also based on where the jobs are located, regardless of where the workers reside. Non-farm payroll employment data are collected and compiled by Current Employment Statistics (CES) Survey.

Labor Force Participation Rate: The labor force participation rate represents the number of people in the labor force as a percentage of the civilian noninstitutional population. In other words, the participation rate is the percentage of the population that is either working or actively looking for work. The labor force participation rate is calculated as: $(\text{Labor Force} \div \text{Civilian Noninstitutional Population}) \times 100$.

Labor Market Information (LMI): A body of knowledge that includes a variety of economic, social, and demographic information. This information describes current conditions and forecasts employment conditions at a future date. LMI is comprised of population data, labor force data, industry data, occupational data, general economic trends, and career data.

Local Area Unemployment Statistics (LAUS): A federal-state cooperative program, which produces monthly estimates of total employment and unemployment for approximately 7,500 areas.

Metropolitan Area (MA): A Core Based Statistical Area associated with at least one urbanized area that has a population of at least 50,000. The Metropolitan Statistical Area comprises the central county or counties containing the core, plus adjacent outlying counties having a high degree of social and economic integration with the central county as measured through commuting.

North American Industrial Classification System (NAICS): A system of identifying industry activity, NAICS is replacing the U.S. Standard Industrial Classification (SIC) system. NAICS will reshape the way we track our industries. NAICS was developed jointly by the U.S., Canada, and Mexico to provide new comparability in statistics about business activity across North America.

Occupational Employment Statistics (OES): A federal state cooperative program, which collects detailed occupational data by industry in a three-year cycle. The OES survey is an annual mail survey measuring occupational employment and occupational wage rates for wage and salary workers in nonfarm establishments, by industry. On a national level, the survey samples approximately 400,000 establishments per year, taking 3 years to fully collect the sample of 1.2 million establishments.

Seasonal Adjustment: A statistical technique that eliminates the influences of weather, holidays, the opening and closing of schools, and other recurring seasonal events from economic time series. This permits easier observation and analysis of cyclical, trend, and other nonseasonal movements in the data.

Standard Occupational Classification (SOC): This is an occupational coding system that was presented by the Bureau of Labor Statistics (BLS) to replace and consolidate several previous coding systems used to classify occupations. The consolidated coding systems include the Occupational Employment Statistics (OES), the Dictionary of Occupational Titles (DOT), and the grouping of occupational titles used by the Census based on survey responses.

Workforce Regions: State specific geographical area, designated by the governor, within which employment and training services are provided under the Workforce Innovation and Opportunity Act (WIOA) in Alabama.

EMPLOYEES IN NONAGRICULTURAL INDUSTRIES IN ALABAMA 1/
(in thousands)

INDUSTRY				NET CHANGE FROM:		PERCENT CHANGE FROM:	
	May p 2025	Apr r 2025	May r 2024	Apr r 2025	May r 2024	Apr r 2025	May r 2024
Total Nonfarm	2217.6	2216.6	2194.5	1.0	23.1	0.05	1.05
Total Private	1794.0	1793.7	1775.9	0.3	18.1	0.02	1.02
Goods Producing	405.3	405.2	399.1	0.1	6.2	0.02	1.55
Mining and Logging	9.2	9.4	9.4	-0.2	-0.2	-2.13	-2.13
Mining (except Oil and Gas)	4.7	4.8	4.8	-0.1	-0.1	-2.08	-2.08
Construction	108.7	107.9	106.5	0.8	2.2	0.74	2.07
Construction of Buildings	24.7	24.6	24.7	0.1	0.0	0.41	0.00
Heavy and Civil Engineering Construction	18.6	18.9	18.1	-0.3	0.5	-1.59	2.76
Specialty Trade Contractors	65.4	64.4	63.7	1.0	1.7	1.55	2.67
Manufacturing	287.4	287.9	283.2	-0.5	4.2	-0.17	1.48
Durable Goods Manufacturing	195.0	195.1	192.8	-0.1	2.2	-0.05	1.14
Wood Product Manufacturing	18.8	18.8	18.7	0.0	0.1	0.00	0.53
Primary Metal Manufacturing	18.6	18.6	18.3	0.0	0.3	0.00	1.64
Fabricated Metal Product Manufacturing	27.9	27.9	27.1	0.0	0.8	0.00	2.95
Machinery Manufacturing	10.6	10.6	10.6	0.0	0.0	0.00	0.00
Computer and Electronic Product Manufacturing	7.3	7.3	7.2	0.0	0.1	0.00	1.39
Elect.Equipment, Appliance & Component Manfng	6.7	6.8	6.5	-0.1	0.2	-1.47	3.08
Transportation Equipment Manufacturing	79.6	79.7	79.2	-0.1	0.4	-0.13	0.51
Motor Vehicle Manufacturing	23.0	23.1	22.6	-0.1	0.4	-0.43	1.77
Motor Vehicle Parts Manufacturing	30.3	30.4	30.1	-0.1	0.2	-0.33	0.66
Aerospace Products & Parts Manufacturing	14.8	14.8	14.7	0.0	0.1	0.00	0.68
Furniture and Related Product Manufacturing	8.8	8.7	8.7	0.1	0.1	1.15	1.15
Non-Durable Goods Manufacturing	92.4	92.8	90.4	-0.4	2.0	-0.43	2.21
Food Manufacturing	34.5	34.5	32.5	0.0	2.0	0.00	6.15
Animal Slaughtering and Processing	25.7	25.8	24.0	-0.1	1.7	-0.39	7.08
Textile Mills	3.6	3.6	3.9	0.0	-0.3	0.00	-7.69
Fiber, Yarn, and Thread Mills	1.3	1.3	1.4	0.0	-0.1	0.00	-7.14
Textile Product Mills	2.4	2.4	2.4	0.0	0.0	0.00	0.00
Textile Furnishings Mills	1.0	1.0	1.0	0.0	0.0	0.00	0.00
Paper Manufacturing	11.4	11.5	11.4	-0.1	0.0	-0.87	0.00
Pulp, Paper, and Paperboard Mills	6.6	6.7	6.6	-0.1	0.0	-1.49	0.00
Plastics and Rubber Products Manufacturing	18.2	18.3	18.3	-0.1	-0.1	-0.55	-0.55
Service Providing	1812.3	1811.4	1795.4	0.9	16.9	0.05	0.94
Private Service Providing	1388.7	1388.5	1376.8	0.2	11.9	0.01	0.86
Trade, Transportation, and Utilities	410.3	411.6	408.0	-1.3	2.3	-0.32	0.56
Wholesale Trade	79.9	80.2	79.9	-0.3	0.0	-0.37	0.00
Merchant Wholesalers, Durable Goods	42.6	42.5	41.5	0.1	1.1	0.24	2.65
Merchant Wholesalers, Nondurable Goods	22.9	23.1	23.0	-0.2	-0.1	-0.87	-0.43
Wholesale Trade Agents and Brokers	14.4	14.6	15.4	-0.2	-1.0	-1.37	-6.49

p = Preliminary r = Revised

1/ Data include, on a place of work basis, all full and part-time nonagricultural wage and salary employees who worked during or received pay for, any part of the pay period which included the 12th of the month. Proprietors, self-employed persons, workers in private households and unpaid family workers are excluded. Estimates adjusted to a 2024 benchmark, based on the North American Industry Classification System (NAICS), 2022. Totals may not add due to rounding.

EMPLOYEES IN NONAGRICULTURAL INDUSTRIES IN ALABAMA ^{1/}

(in thousands)

INDUSTRY				NET CHANGE FROM:		PERCENT CHANGE FROM:	
	May p 2025	Apr r 2025	May r 2024	Apr r 2025	May r 2024	Apr r 2025	May r 2024
Retail Trade	242.0	243.1	238.2	-1.1	3.8	-0.45	1.60
Motor Vehicle and Parts Dealers	33.6	34.2	33.7	-0.6	-0.1	-1.75	-0.30
Building Mat. & Garden Equip. and Supplies Dealers	24.8	24.8	24.3	0.0	0.5	0.00	2.06
Food and Beverage Retailers	37.2	37.2	36.5	0.0	0.7	0.00	1.92
General Merchandise Retailers	62.6	62.6	61.2	0.0	1.4	0.00	2.29
Department Stores	13.9	14.1	13.5	-0.2	0.4	-1.42	2.96
Warehouse Clubs, Supercenters, and Other General	48.7	48.5	47.7	0.2	1.0	0.41	2.10
Health and Personal Care Retailers	15.7	15.7	16.0	0.0	-0.3	0.00	-1.88
Trans, Warehousing, and Utilities	88.4	88.3	89.9	0.1	-1.5	0.11	-1.67
Utilities	12.8	12.7	12.9	0.1	-0.1	0.79	-0.78
Elect. Power Gen., Transmission & Distribution	10.6	10.6	10.7	0.0	-0.1	0.00	-0.93
Transportation and Warehousing	75.6	75.6	77.0	0.0	-1.4	0.00	-1.82
Truck Transportation	26.4	26.3	27.0	0.1	-0.6	0.38	-2.22
General Freight Trucking	16.7	16.6	17.2	0.1	-0.5	0.60	-2.91
Information	22.8	22.9	23.0	-0.1	-0.2	-0.44	-0.87
Telecommunications	6.9	7.0	7.4	-0.1	-0.5	-1.43	-6.76
Financial Activities	103.4	103.4	103.6	0.0	-0.2	0.00	-0.19
Finance and Insurance	75.2	74.7	75.2	0.5	0.0	0.67	0.00
Credit Intermediation and Related Activities	37.2	37.1	37.7	0.1	-0.5	0.27	-1.33
Depository Credit Intermediation	29.4	29.5	29.9	-0.1	-0.5	-0.34	-1.67
Insurance Carriers and Related Activities	32.1	32.0	32.2	0.1	-0.1	0.31	-0.31
Insurance Carriers	13.7	13.7	13.9	0.0	-0.2	0.00	-1.44
Real Estate and Rental and Leasing	28.2	28.7	28.4	-0.5	-0.2	-1.74	-0.70
Professional and Business Services	260.8	264.5	265.8	-3.7	-5.0	-1.40	-1.88
Professional, Scientific and Technical Services	127.9	131.2	126.0	-3.3	1.9	-2.52	1.51
Architectural, Engineering, and Related Services	34.1	34.2	32.9	-0.1	1.2	-0.29	3.65
Computer Systems Design and Related Services	27.3	27.4	26.7	-0.1	0.6	-0.36	2.25
Management of Companies and Enterprises	17.7	17.6	17.3	0.1	0.4	0.57	2.31
Admin, Support & Waste Mngmt & Remediation Svcs.	115.2	115.7	122.5	-0.5	-7.3	-0.43	-5.96
Private Education and Health Services	270.9	272.0	264.2	-1.1	6.7	-0.40	2.54
Private Educational Services	31.6	33.2	33.1	-1.6	-1.5	-4.82	-4.53
Health Care and Social Assistance	239.3	238.8	231.1	0.5	8.2	0.21	3.55
Ambulatory Health Care Services	111.4	111.4	109.4	0.0	2.0	0.00	1.83
Offices of Physicians	43.6	43.9	43.8	-0.3	-0.2	-0.68	-0.46
Hospitals	45.7	45.8	44.1	-0.1	1.6	-0.22	3.63
Nursing and Residential Care Facilities	44.5	44.8	43.0	-0.3	1.5	-0.67	3.49
Social Assistance	37.7	36.8	34.6	0.9	3.1	2.45	8.96
Leisure and Hospitality	219.3	213.8	213.0	5.5	6.3	2.57	2.96
Arts, Entertainment, and Recreation	23.7	22.6	24.9	1.1	-1.2	4.87	-4.82
Amusements, Gambling, and Recreation	19.8	18.7	19.9	1.1	-0.1	5.88	-0.50
Accommodation and Food Services	195.6	191.2	188.1	4.4	7.5	2.30	3.99
Food Services and Drinking Places	179.1	174.6	170.7	4.5	8.4	2.58	4.92
Restaurants and Other Eating Places	168.0	163.3	161.2	4.7	6.8	2.88	4.22
Full-Service Restaurants	70.9	68.3	65.5	2.6	5.4	3.81	8.24
Limited-Services Eating Places	97.1	95.0	95.7	2.1	1.4	2.21	1.46
Other Services	101.2	100.3	99.2	0.9	2.0	0.90	2.02
Government	423.6	422.9	418.6	0.7	5.0	0.17	1.19
Federal Government	57.3	58.1	58.0	-0.8	-0.7	-1.38	-1.21
State Government	133.7	134.2	131.0	-0.5	2.7	-0.37	2.06
State Government Educational Services	76.5	76.8	75.4	-0.3	1.1	-0.39	1.46
State Government Excluding Educational Services	57.2	57.4	55.6	-0.2	1.6	-0.35	2.88
Local Government	232.6	230.6	229.6	2.0	3.0	0.87	1.31
Local Government Educational Services	104.1	103.8	103.2	0.3	0.9	0.29	0.87
Local Government Excluding Educational Services	128.5	126.8	126.4	1.7	2.1	1.34	1.66

p = Preliminary r = Revised

^{1/} Data include, on a place of work basis, all full and part-time nonagricultural wage and salary employees who worked during or received pay for, any part of the pay period which included the 12th of the month. Proprietors, self-employed persons, workers in private households and unpaid family workers are excluded. Estimates adjusted to a 2024 benchmark, based on the North American Industry Classification System (NAICS), 2022. Totals may not add due to rounding.

NONAGRICULTURAL WAGE AND SALARY EMPLOYMENT IN ALABAMA 1/ (in thousands)

INDUSTRY	Not Seasonally Adjusted			Seasonally Adjusted ^{3/}		
	May p 2025	Apr r 2025	May r 2024	May p 2025	Apr r 2025	May r 2024
Total Nonfarm^{2/}	2217.6	2216.6	2194.5	2215.8	2215.4	2189.9
Total Private	1794.0	1793.7	1775.9	1794.2	1794.4	1773.9
Goods Producing	405.3	405.2	399.1	405.9	406.4	399.4
Mining and Logging	9.2	9.4	9.4	9.3	9.5	9.4
Construction	108.7	107.9	106.5	109.1	108.6	106.3
Manufacturing	287.4	287.9	283.2	287.5	288.3	283.7
Service Providing	1812.3	1811.4	1795.4	1809.9	1809.0	1790.5
Private Service Providing	1388.7	1388.5	1376.8	1388.3	1388.0	1374.5
Trade, Transportation, and Utilities	410.3	411.6	408.0	412.6	413.5	410.3
Wholesale Trade	79.9	80.2	79.9	79.9	80.1	79.9
Retail Trade	242.0	243.1	238.2	242.7	243.7	239.3
Transportation, Warehousing, and Utilities	88.4	88.3	89.9	90.0	89.7	91.1
Information	22.8	22.9	23.0	22.8	22.9	23.1
Financial Activities	103.4	103.4	103.6	103.9	103.9	103.7
Finance and Insurance	75.2	74.7	75.2	75.7	75.1	75.5
Real Estate and Rental and Leasing	28.2	28.7	28.4	28.2	28.8	28.2
Professional and Business Services	260.8	264.5	265.8	261.4	262.7	265.2
Professional, Scientific, and Tech Services	127.9	131.2	126.0	128.9	130.0	126.2
Management of Companies and Enterprises	17.7	17.6	17.3	17.6	17.6	17.3
Admin, Supp & Waste Manage & Remed Services	115.2	115.7	122.5	114.9	115.1	121.7
Private Education and Health Services	270.9	272.0	264.2	272.5	271.7	263.9
Private Educational Services	31.6	33.2	33.1	32.2	32.4	32.8
Health Care and Social Assistance	239.3	238.8	231.1	240.3	239.3	231.1
Leisure and Hospitality	219.3	213.8	213.0	214.3	213.0	209.5
Arts, Entertainment, and Recreation	23.7	22.6	24.9	23.3	23.2	23.3
Accommodation and Food Services	195.6	191.2	188.1	191.0	189.8	186.2
Other Services	101.2	100.3	99.2	100.8	100.3	98.8
Government	423.6	422.9	418.6	421.6	421.0	416.0
Federal Government	57.3	58.1	58.0	57.6	58.0	58.1
State Government	133.7	134.2	131.0	133.4	133.3	130.6
Local Government	232.6	230.6	229.6	230.6	229.7	227.3

METROPOLITAN STATISTICAL AREAS Total Nonfarm Employment	Not Seasonally Adjusted			Seasonally Adjusted		
	May p 2025	Apr r 2025	May r 2024	May p 2025	Apr r 2025	May r 2024
Anniston-Oxford	47.5	47.4	46.7	47.4	47.3	46.7
Auburn-Opelika	80.8	81.3	79.9	80.9	81.1	80.1
Birmingham	571.3	572.0	571.9	572.0	572.8	571.2
Daphne-Fairhope-Foley	91.6	91.1	91.8	90.8	91.0	90.4
Decatur	63.0	62.7	61.6	62.8	62.7	61.5
Dothan	63.5	63.5	63.1	63.4	63.5	63.0
Florence-Muscle Shoals	60.9	60.9	59.4	60.5	60.7	59.0
Gadsden	35.5	35.4	35.3	35.4	35.4	35.1
Huntsville	292.7	292.5	285.4	292.7	292.4	285.4
Mobile	194.6	193.6	189.9	194.3	193.5	190.1
Montgomery	188.6	188.1	187.1	188.3	188.6	186.3
Tuscaloosa	118.7	118.9	117.6	118.8	118.6	117.8

p= Preliminary r= Revised

1/ Nonagricultural wage and salary employment estimates prepared by the United States Department of Labor. Data estimated on place of work basis and seasonally adjusted by use of the Bureau of Labor Statistics X-12 Seasonal Adjustment method.

2/ Total Nonfarm employment may not equal sum of data in seasonally adjusted columns due to some series not being seasonally adjusted.

3/ A 3-month average of seasonally adjusted over-the-month change is available at www.bls.gov/sae/tables/state-news-

HOURS AND EARNINGS DATA FOR SELECTED NONAGRICULTURAL INDUSTRIES IN ALABAMA^{1/}

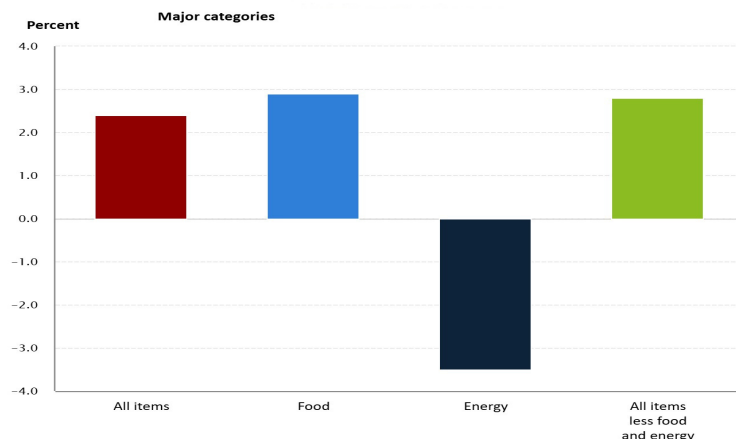
STATEWIDE INDUSTRY	All Employees (in thousands)			Average Weekly Earnings			Average Weekly Hours			Average Hourly Earnings		
	May p 2025	Apr r 2025	May r 2024	May p 2025	Apr r 2025	May r 2024	May p 2025	Apr r 2025	May r 2024	May p 2025	Apr r 2025	May r 2024
Total Private	1,794.0	1,793.7	1,775.9	\$1,096.48	\$1,101.01	\$1,034.31	35.2	35.3	34.5	\$31.15	\$31.19	\$29.98
Goods Producing	405.3	405.2	399.1	\$1,332.68	\$1,340.88	\$1,220.48	42.2	42.5	40.4	\$31.58	\$31.55	\$30.21
Construction	108.7	107.9	106.5	\$1,321.61	\$1,396.51	\$1,290.74	42.4	43.6	40.5	\$31.17	\$32.03	\$31.87
Manufacturing	287.4	287.9	283.2	\$1,340.11	\$1,343.73	\$1,209.58	41.8	41.9	40.4	\$32.06	\$32.07	\$29.94
Private Service Providing	1,388.7	1,388.5	1,376.8	\$1,025.77	\$1,030.86	\$980.72	33.1	33.2	32.8	\$30.99	\$31.05	\$29.90
Trade, Transportation, and Utilities	410.3	411.6	408.0	\$948.38	\$926.97	\$882.38	33.3	33.0	32.9	\$28.48	\$28.09	\$26.82
Financial Activities	103.4	103.4	103.6	\$1,287.63	\$1,300.51	\$1,328.30	36.8	37.2	37.0	\$34.99	\$34.96	\$35.90
Professional and Business Services	260.8	264.5	265.8	\$1,391.78	\$1,384.05	\$1,311.81	36.8	36.8	36.5	\$37.82	\$37.61	\$35.94
Private Education and Health Services	270.9	272.0	264.2	\$1,013.04	\$1,024.43	\$989.54	33.5	33.5	33.9	\$30.24	\$30.58	\$29.19
Leisure and Hospitality	219.3	213.8	213.0	\$430.96	\$430.50	\$410.33	24.5	24.6	24.6	\$17.59	\$17.50	\$16.68
Other Services	101.2	100.3	99.2	\$902.07	\$905.94	\$881.79	31.3	31.5	32.1	\$28.82	\$28.76	\$27.47
MANUFACTURING: PRODUCTION WORKERS	Production Workers (in thousands)			Average Weekly Earnings			Average Weekly Hours			Average Hourly Earnings		
	May p 2025	Apr r 2025	May r 2024	May p 2025	Apr r 2025	May r 2024	May p 2025	Apr r 2025	May r 2024	May p 2025	Apr r 2025	May r 2024
Manufacturing	208.6	208.3	197.9	\$1,121.46	\$1,098.16	\$993.71	43.1	42.4	41.7	\$26.02	\$25.90	\$23.83
Durable Goods	136.3	136.5	131.9	\$1,141.44	\$1,117.98	\$983.66	43.7	43.4	41.4	\$26.12	\$25.76	\$23.76
Non-Durable Goods	72.3	71.8	66.0	\$1,084.86	\$1,061.10	\$1,015.90	42.0	40.5	42.4	\$25.83	\$26.20	\$23.96
METROPOLITAN STATISTICAL AREAS	All Employees (in thousands)			Average Weekly Earnings			Average Weekly Hours			Average Hourly Earnings		
	May p 2025	Apr r 2025	May r 2024	May p 2025	Apr r 2025	May r 2024	May p 2025	Apr r 2025	May r 2024	May p 2025	Apr r 2025	May r 2024
Anniston-Oxford	47.5	47.4	46.7	\$736.78	\$722.57	\$800.60	32.4	32.2	33.4	\$22.74	\$22.44	\$23.97
Auburn-Opelika	80.8	81.3	79.9	\$760.41	\$759.83	\$733.29	30.6	30.9	29.7	\$24.85	\$24.59	\$24.69
Birmingham	571.3	572.0	571.9	\$1,129.02	\$1,159.70	\$1,070.74	34.9	35.4	34.1	\$32.35	\$32.76	\$31.40
Daphne-Fairhope-Foley	91.6	91.1	91.8	\$867.10	\$842.08	\$824.60	32.5	32.5	31.0	\$26.68	\$25.91	\$26.60
Decatur	63.0	62.7	61.6	\$1,148.25	\$1,154.79	\$955.69	37.5	37.8	35.7	\$30.62	\$30.55	\$26.77
Dothan	63.5	63.5	63.1	\$759.45	\$775.22	\$754.97	33.5	33.2	34.1	\$22.67	\$23.35	\$22.14
Florence-Muscle Shoals	60.9	60.9	59.4	\$893.73	\$902.65	\$831.05	35.2	35.0	32.9	\$25.39	\$25.79	\$25.26
Gadsden	35.5	35.4	35.3	\$807.15	\$812.25	\$792.92	34.1	34.2	33.4	\$23.67	\$23.75	\$23.74
Huntsville	292.7	292.5	285.4	\$1,356.22	\$1,362.20	\$1,334.91	34.3	34.6	34.7	\$39.54	\$39.37	\$38.47
Mobile	194.6	193.6	189.9	\$1,098.54	\$1,118.00	\$1,009.24	35.9	36.5	35.7	\$30.60	\$30.63	\$28.27
Montgomery	188.6	188.1	187.1	\$1,093.33	\$1,086.97	\$1,000.50	35.8	36.1	34.8	\$30.54	\$30.11	\$28.75
Tuscaloosa	118.7	118.9	117.6	\$956.93	\$950.54	\$886.91	33.6	33.6	32.8	\$28.48	\$28.29	\$27.04

p = Preliminary r = Revised

^{1/} Estimates, computed on a gross basis, do not represent straight time earnings or standard workweek.

Consumer Price Index

12-month percentage change, Consumer Price Index, selected categories, May 2025, not seasonally adjusted

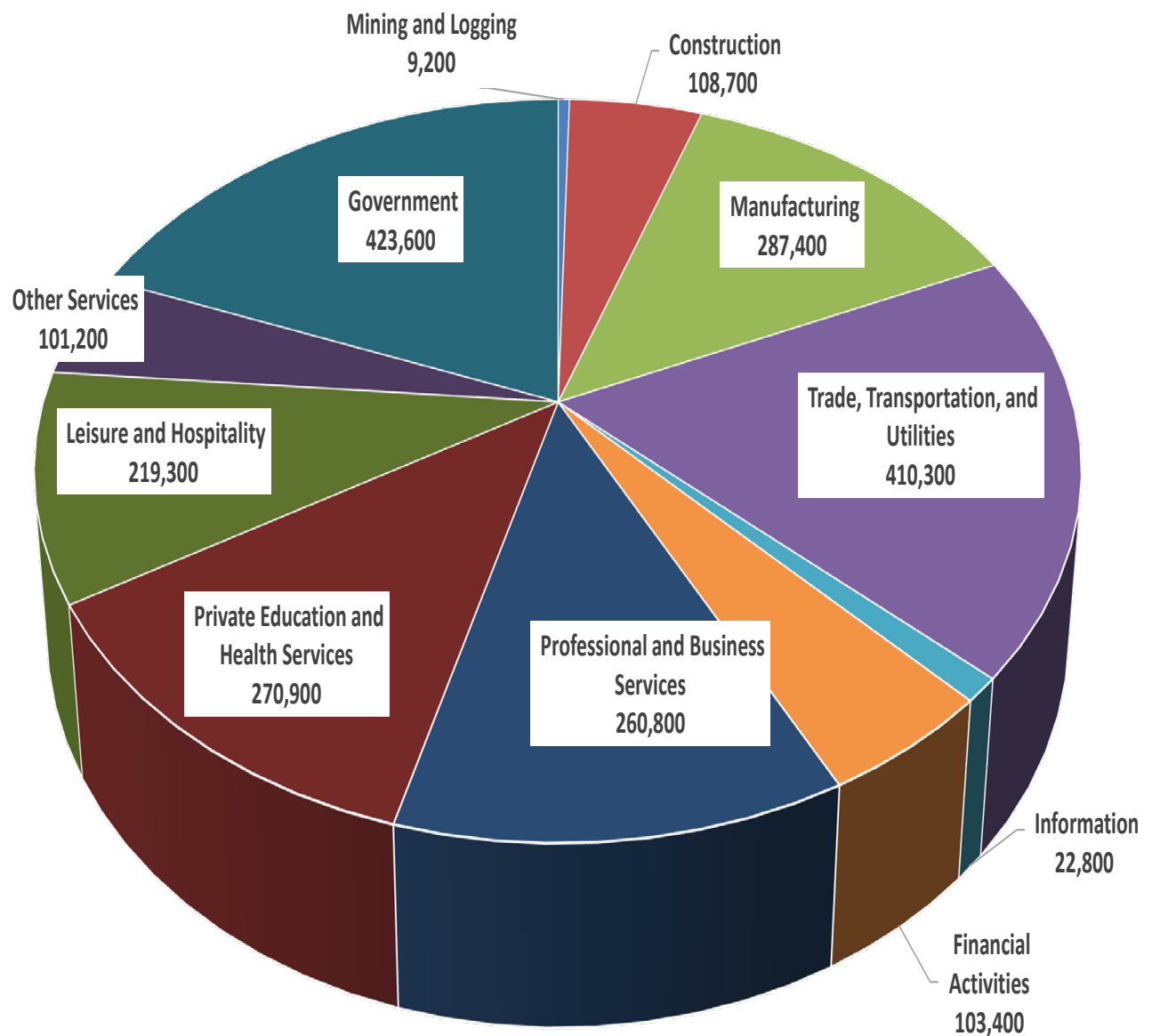


The Consumer Price Index for All Urban Consumers (CPI-U) increased 2.4 percent over the last 12 months to an index level of 321.465 (1982-84=100). For May, the index increased 0.2 percent prior to seasonal adjustment.

The Consumer Price Index for Urban Wage Earners and Clerical Workers (CPI-W) increased 2.2 percent over the last 12 months to an index level of 314.839 (1982-84=100). For May, the index increased 0.2 percent prior to seasonal adjustment.

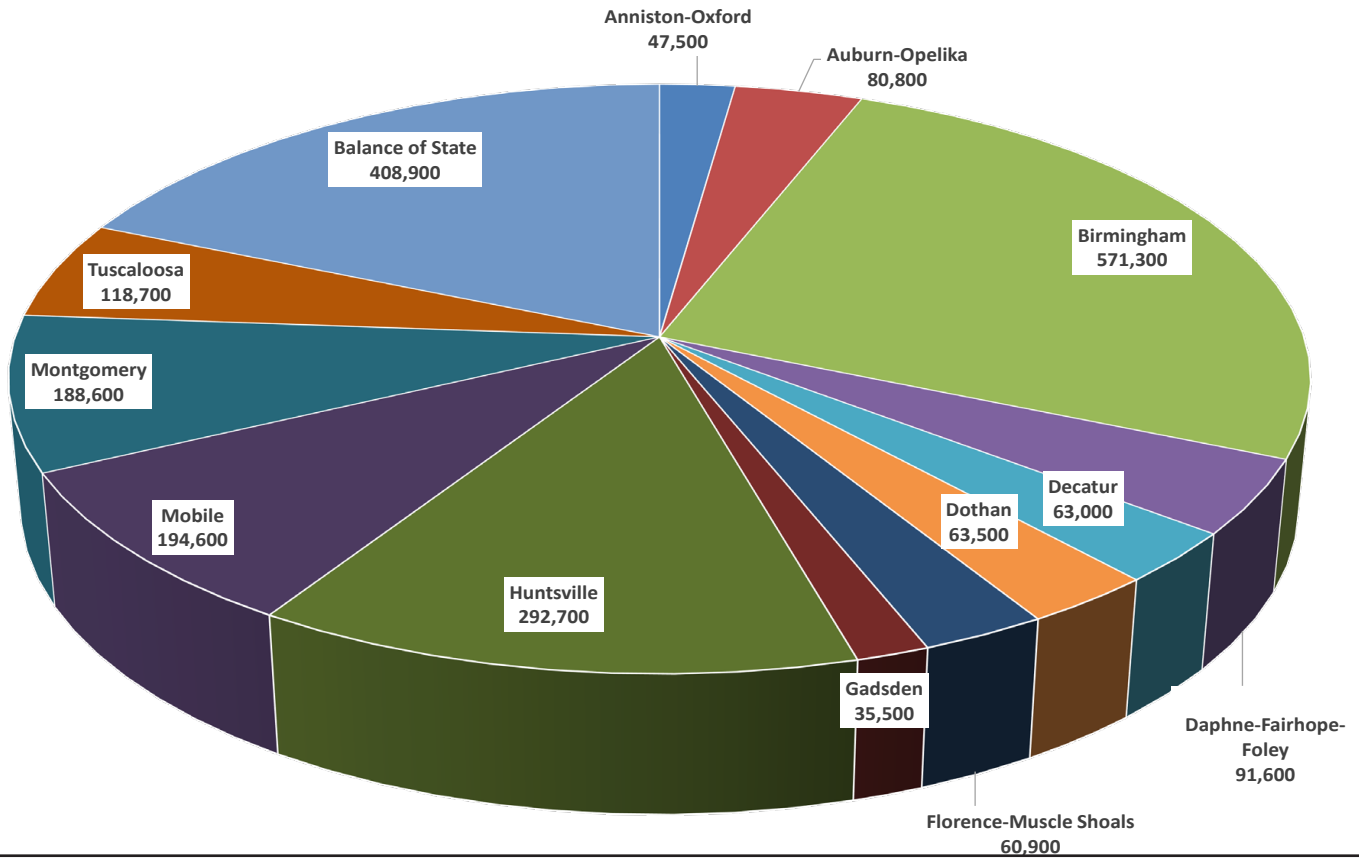
For further details visit the CPI homepage online at <http://www.bls.gov/cpi/> or contact the CPI Information Office at (202) 691-7000.

Alabama May 2025 Preliminary
Current Employment Statistics
Statewide Employment by Industry Sector



Estimates prepared by the U.S. Department of Labor, Bureau of Labor Statistics and adjusted to a 2024 benchmark, based on the North American Industry Classification System (NAICS), 2022.

Alabama May 2025 Preliminary
Current Employment Statistics
Statewide Employment by Geography



**NONAGRICULTURAL WAGE AND SALARY EMPLOYMENT
FOR ALABAMA METROPOLITAN STATISTICAL AREAS (MSA'S)^{1/}**

<u>ANNISTON-OXFORD MSA</u>	May p 2025	Apr r 2025	May r 2024	Net Change From :	
				Apr r 2025	May r 2024
TOTAL NONAGRICULTURAL EMPLOYMENT	47,500	47,400	46,700	100	800
GOODS PRODUCING	8,100	8,100	7,900	0	200
Mining, Logging, and Construction	1,400	1,400	1,300	0	100
Manufacturing	6,700	6,700	6,600	0	100
SERVICE PROVIDING	39,400	39,300	38,800	100	600
Trade, Transportation, and Utilities	9,100	9,200	9,200	-100	-100
Wholesale Trade	1,900	1,900	1,800	0	100
Retail Trade	5,900	6,000	6,000	-100	-100
Transportation, Warehousing and Utilities	1,300	1,300	1,400	0	-100
Information	300	300	300	0	0
Financial Activities	1,400	1,400	1,400	0	0
Professional and Business Services	3,800	3,900	4,000	-100	-200
Private Education and Health Services	4,700	4,700	4,500	0	200
Leisure and Hospitality	5,400	5,300	5,100	100	300
Other Services	1,900	1,800	1,800	100	100
Government	12,800	12,700	12,500	100	300
Federal	3,600	3,500	3,400	100	200
State and Local	9,200	9,200	9,100	0	100

¹ Place of work basis. p Preliminary. r Revised.

NOTE: Estimates prepared by the U.S. Department of Labor, Bureau of Labor Statistics.

Estimates adjusted to a 2024 benchmark. Based on the North American Industry Classification System (NAICS), 2022.

<u>AUBURN-OPELIKA MSA</u>	May p 2025	Apr r 2025	May r 2024	Net Change From :	
				Apr r 2025	May r 2024
TOTAL NONAGRICULTURAL EMPLOYMENT	80,800	81,300	79,900	-500	900
GOODS PRODUCING	11,500	11,500	11,400	0	100
Mining, Logging, and Construction	3,700	3,700	3,600	0	100
Manufacturing	7,800	7,800	7,800	0	0
SERVICE PROVIDING	69,300	69,800	68,500	-500	800
Trade, Transportation, and Utilities	13,200	13,600	13,300	-400	-100
Wholesale Trade	1,500	1,500	1,600	0	-100
Retail Trade	8,600	8,700	8,300	-100	300
Transportation, Warehousing and Utilities	3,100	3,400	3,400	-300	-300
Information	900	900	900	0	0
Financial Activities	2,600	2,600	2,600	0	0
Professional and Business Services	8,900	9,000	8,800	-100	100
Private Education and Health Services	6,300	6,400	6,300	-100	0
Leisure and Hospitality	10,700	10,700	10,100	0	600
Other Services	2,800	2,700	2,700	100	100
Government	23,900	23,900	23,800	0	100
Federal	1,300	1,300	1,300	0	0
State and Local	22,600	22,600	22,500	0	100

¹ Place of work basis. p Preliminary. r Revised.

NOTE: Estimates prepared by the U.S. Department of Labor, Bureau of Labor Statistics.

Estimates adjusted to a 2024 benchmark. Based on the North American Industry Classification System (NAICS), 2022.

**NONAGRICULTURAL WAGE AND SALARY EMPLOYMENT
FOR ALABAMA METROPOLITAN STATISTICAL AREAS (MSA'S)^{1/}**

<u>BIRMINGHAM MSA</u>	May p 2025	Apr r 2025	May r 2024	Net Change From :	
				Apr r 2025	May r 2024
TOTAL NONAGRICULTURAL EMPLOYMENT	571,300	572,000	571,900	-700	-600
GOODS PRODUCING	74,100	73,900	74,000	200	100
Mining and Logging	2,500	2,600	2,500	-100	0
Construction	30,700	30,400	31,100	300	-400
Specialty Trade Contractors	18,200	18,000	18,500	200	-300
Manufacturing	40,900	40,900	40,400	0	500
Durable Goods	28,800	28,800	28,700	0	100
Primary Metal Manufacturing	5,200	5,200	5,200	0	0
Nondurable Goods	12,100	12,100	11,700	0	400
Food Manufacturing	4,100	4,100	4,000	0	100
SERVICE PROVIDING	497,200	498,100	497,900	-900	-700
Trade, Transportation, and Utilities	114,500	114,400	115,400	100	-900
Wholesale Trade	28,500	28,700	28,900	-200	-400
Merchant Wholesalers	14,800	14,800	14,500	0	300
Retail Trade	58,700	58,600	58,300	100	400
General Merchandise Retailers	14,400	14,300	14,100	100	300
Transportation, Warehousing and Utilities	27,300	27,100	28,200	200	-900
Utilities	6,100	6,100	6,300	0	-200
Transportation and Warehousing	21,200	21,000	21,900	200	-700
Information	9,200	9,300	9,100	-100	100
Telecommunication	2,800	2,800	2,900	0	-100
Financial Activities	44,000	44,200	44,600	-200	-600
Finance and Insurance	35,600	35,800	36,000	-200	-400
Credit Intermediation and Related	14,400	14,400	14,600	0	-200
Insurance Carriers and Related	18,700	18,800	18,800	-100	-100
Professional and Business Services	73,400	74,800	75,100	-1,400	-1,700
Professional, Scientific and Technical Services	31,800	32,900	31,800	-1,100	0
Management of Companies and Enterprises	9,400	9,300	9,200	100	200
Admin., Support and Waste Management	32,200	32,600	34,100	-400	-1,900
Private Education and Health Services	80,600	81,400	79,400	-800	1,200
Health Care and Social Assistance	73,400	73,200	70,600	200	2,800
Ambulatory Healthcare	35,400	35,300	34,800	100	600
Hospitals	17,300	17,300	16,800	0	500
Leisure and Hospitality	52,700	51,400	53,000	1,300	-300
Food Service and Drinking Places	42,200	41,300	41,800	900	400
Other Services	31,800	31,400	31,100	400	700
Government	91,000	91,200	90,200	-200	800
Federal	9,500	9,700	9,800	-200	-300
State	35,600	35,800	35,000	-200	600
Local	45,900	45,700	45,400	200	500

¹ Place of work basis. p Preliminary. r Revised.

NOTE: Estimates prepared by the U.S. Department of Labor, Bureau of Labor Statistics.

Estimates adjusted to a 2024 benchmark. Based on the North American Industry Classification System (NAICS), 2022.

<u>DAPHNE-FAIRHOPE-FOLEY MSA</u>	May p 2025	Apr r 2025	May r 2024	Net Change From :	
				Apr r 2025	May r 2024
TOTAL NONAGRICULTURAL EMPLOYMENT	91,600	91,100	91,800	500	-200
GOODS PRODUCING	9,800	9,800	10,500	0	-700
SERVICE PROVIDING	81,800	81,300	81,300	500	500
Government	11,800	11,800	11,600	0	200

¹ Place of work basis. p Preliminary. r Revised.

NOTE: Estimates prepared by the U.S. Department of Labor, Bureau of Labor Statistics.

Estimates adjusted to a 2024 benchmark. Based on the North American Industry Classification System (NAICS), 2022.

**NONAGRICULTURAL WAGE AND SALARY EMPLOYMENT
FOR ALABAMA METROPOLITAN STATISTICAL AREAS (MSA'S)^{1/}**

<u>DECATUR MSA</u>	May p 2025	Apr r 2025	May r 2024	Net Change From :	
				Apr r 2025	May r 2024
TOTAL NONAGRICULTURAL EMPLOYMENT	63,000	62,700	61,600	300	1,400
GOODS PRODUCING	19,600	19,500	18,800	100	800
Mining, Logging, and Construction	4,800	4,700	4,700	100	100
Manufacturing	14,800	14,800	14,100	0	700
Durable Goods	8,500	8,500	7,900	0	600
Nondurable Goods	6,300	6,300	6,200	0	100
SERVICE PROVIDING	43,400	43,200	42,800	200	600
Trade, Transportation, and Utilities	11,100	11,100	11,000	0	100
Wholesale Trade	2,600	2,600	2,500	0	100
Retail Trade	6,600	6,600	6,500	0	100
Transportation, Warehousing and Utilities	1,900	1,900	2,000	0	-100
Information	400	400	400	0	0
Financial Activities	2,400	2,400	2,300	0	100
Professional and Business Services	6,800	6,800	6,900	0	-100
Private Education and Health Services	5,400	5,400	5,300	0	100
Leisure and Hospitality	5,400	5,300	5,300	100	100
Other Services	2,500	2,500	2,500	0	0
Government	9,400	9,300	9,100	100	300
Federal	400	400	400	0	0
State and Local	9,000	8,900	8,700	100	300

¹ Place of work basis. p Preliminary. r Revised.

NOTE: Estimates prepared by the U.S. Department of Labor, Bureau of Labor Statistics.

Estimates adjusted to a 2024 benchmark. Based on the North American Industry Classification System (NAICS), 2022.

<u>DOTHAN MSA</u>	May p 2025	Apr r 2025	May r 2024	Net Change From :	
				Apr r 2025	May r 2024
TOTAL NONAGRICULTURAL EMPLOYMENT	63,500	63,500	63,100	0	400
GOODS PRODUCING	8,700	8,700	8,500	0	200
Mining, Logging, and Construction	2,900	2,900	2,900	0	0
Manufacturing	5,800	5,800	5,600	0	200
SERVICE PROVIDING	54,800	54,800	54,600	0	200
Trade, Transportation, and Utilities	16,000	16,100	16,000	-100	0
Wholesale Trade	3,300	3,400	3,300	-100	0
Retail Trade	9,400	9,400	9,200	0	200
Transportation, Warehousing and Utilities	3,300	3,300	3,500	0	-200
Information	400	400	400	0	0
Financial Activities	2,100	2,100	2,100	0	0
Professional and Business Services	5,700	5,800	6,100	-100	-400
Private Education and Health Services	9,800	9,800	9,500	0	300
Leisure and Hospitality	6,700	6,600	6,700	100	0
Other Services	2,700	2,700	2,700	0	0
Government	11,400	11,300	11,100	100	300
Federal	400	400	400	0	0
State and Local	11,000	10,900	10,700	100	300

¹ Place of work basis. p Preliminary. r Revised.

NOTE: Estimates prepared by the U.S. Department of Labor, Bureau of Labor Statistics.

Estimates adjusted to a 2024 benchmark. Based on the North American Industry Classification System (NAICS), 2022.

**NONAGRICULTURAL WAGE AND SALARY EMPLOYMENT
FOR ALABAMA METROPOLITAN STATISTICAL AREAS (MSA'S)^{1/}**

<u>FLORENCE - MUSCLE SHOALS MSA</u>	May p 2025	Apr r 2025	May r 2024	Net Change From :	
				Apr r 2025	May r 2024
TOTAL NONAGRICULTURAL EMPLOYMENT	60,900	60,900	59,400	0	1,500
GOODS PRODUCING	13,100	13,100	12,700	0	400
Mining, Logging, and Construction	4,300	4,300	4,000	0	300
Manufacturing	8,800	8,800	8,700	0	100
SERVICE PROVIDING	47,800	47,800	46,700	0	1,100
Trade, Transportation, and Utilities	11,900	12,000	11,900	-100	0
Wholesale Trade	2,400	2,400	2,400	0	0
Retail Trade	8,200	8,300	8,200	-100	0
Transportation, Warehousing and Utilities	1,300	1,300	1,300	0	0
Information	500	500	500	0	0
Financial Activities	2,600	2,600	2,500	0	100
Professional and Business Services	3,400	3,400	3,500	0	-100
Private Education and Health Services	8,200	8,200	7,800	0	400
Leisure and Hospitality	7,300	7,200	6,900	100	400
Other Services	2,500	2,500	2,400	0	100
Government	11,400	11,400	11,200	0	200
Federal	1,000	1,000	1,000	0	0
State and Local	10,400	10,400	10,200	0	200

¹ Place of work basis. p Preliminary. r Revised.

NOTE: Estimates prepared by the U.S. Department of Labor, Bureau of Labor Statistics.

Estimates adjusted to a 2024 benchmark. Based on the North American Industry Classification System (NAICS), 2022.

<u>GADSDEN MSA</u>	May p 2025	Apr r 2025	May r 2024	Net Change From :	
				Apr r 2025	May r 2024
TOTAL NONAGRICULTURAL EMPLOYMENT	35,500	35,400	35,300	100	200
GOODS PRODUCING	5,800	5,800	5,600	0	200
Mining, Logging, and Construction	1,200	1,200	1,200	0	0
Manufacturing	4,600	4,600	4,400	0	200
SERVICE PROVIDING	29,700	29,600	29,700	100	0
Trade, Transportation, and Utilities	6,900	6,900	7,000	0	-100
Wholesale Trade	1,000	1,000	1,100	0	-100
Retail Trade	4,900	4,900	4,800	0	100
Transportation, Warehousing and Utilities	1,000	1,000	1,100	0	-100
Information	200	200	200	0	0
Financial Activities	1,300	1,300	1,300	0	0
Professional and Business Services	2,700	2,700	2,900	0	-200
Private Education and Health Services	7,800	7,800	7,600	0	200
Leisure and Hospitality	4,100	4,000	3,900	100	200
Other Services	1,500	1,500	1,500	0	0
Government	5,200	5,200	5,300	0	-100
Federal	300	300	300	0	0
State and Local	4,900	4,900	5,000	0	-100

¹ Place of work basis. p Preliminary. r Revised.

NOTE: Estimates prepared by the U.S. Department of Labor, Bureau of Labor Statistics.

Estimates adjusted to a 2024 benchmark. Based on the North American Industry Classification System (NAICS), 2022.

**NONAGRICULTURAL WAGE AND SALARY EMPLOYMENT
FOR ALABAMA METROPOLITAN STATISTICAL AREAS (MSA'S)^{1/}**

<u>HUNTSVILLE MSA</u>	May p 2025	Apr r 2025	May r 2024	Net Change From :	
				Apr r 2025	May r 2024
TOTAL NONAGRICULTURAL EMPLOYMENT	292,700	292,500	285,400	200	7,300
GOODS PRODUCING	47,500	47,600	46,600	-100	900
Mining, Logging, and Construction	11,800	11,700	11,100	100	700
Manufacturing	35,700	35,900	35,500	-200	200
Durable Goods	31,500	31,700	31,400	-200	100
Computer and Electronic Prod. Manufacturing	3,500	3,500	3,500	0	0
Transportation Equipment Manufacturing	19,900	20,000	19,800	-100	100
Nondurable Goods	4,200	4,200	4,100	0	100
SERVICE PROVIDING	245,200	244,900	238,800	300	6,400
Trade, Transportation, and Utilities	41,100	41,400	40,200	-300	900
Wholesale Trade	7,200	7,300	7,100	-100	100
Retail Trade	28,200	28,400	27,200	-200	1,000
General Merchandise Retailers	8,100	8,200	7,600	-100	500
Transportation, Warehousing and Utilities	5,700	5,700	5,900	0	-200
Information	2,700	2,700	2,600	0	100
Financial Activities	9,100	9,100	9,000	0	100
Professional and Business Services	69,100	69,400	67,900	-300	1,200
Professional, Scientific and Technical Services	52,300	52,300	50,600	0	1,700
Private Education and Health Services	26,400	26,400	25,300	0	1,100
Leisure and Hospitality	26,000	25,600	24,800	400	1,200
Food Services and Drinking Places	20,500	20,200	19,500	300	1,000
Other Services	9,800	9,700	9,400	100	400
Government	61,000	60,600	59,600	400	1,400
Federal	21,500	21,600	21,300	-100	200
State	9,000	9,100	8,500	-100	500
Local	30,500	29,900	29,800	600	700

¹ Place of work basis. p Preliminary. r Revised.

NOTE: Estimates prepared by the U.S. Department of Labor, Bureau of Labor Statistics.

Estimates adjusted to a 2024 benchmark. Based on the North American Industry Classification System (NAICS), 2022.

<u>MOBILE MSA</u>	May p 2025	Apr r 2025	May r 2024	Net Change From :	
				Apr r 2025	May r 2024
TOTAL NONAGRICULTURAL EMPLOYMENT	194,600	193,600	189,900	1,000	4,700
GOODS PRODUCING	32,000	31,700	30,900	300	1,100
Mining, Logging, and Construction	14,700	14,400	14,000	300	700
Manufacturing	17,300	17,300	16,900	0	400
SERVICE PROVIDING	162,600	161,900	159,000	700	3,600
Trade, Transportation, and Utilities	39,700	39,700	39,200	0	500
Wholesale Trade	8,600	8,700	8,400	-100	200
Retail Trade	20,200	20,200	19,500	0	700
General Merchandise Retailers	5,200	5,200	5,100	0	100
Transportation, Warehousing and Utilities	10,900	10,800	11,300	100	-400
Information	2,200	2,200	2,200	0	0
Financial Activities	8,100	8,100	8,200	0	-100
Professional and Business Services	22,500	22,700	22,500	-200	0
Private Education and Health Services	30,000	29,900	28,700	100	1,300
Health Care and Social Assistance	26,400	26,300	25,200	100	1,200
Leisure and Hospitality	18,100	17,600	17,600	500	500
Food Services and Drinking Places	14,600	14,300	14,300	300	300
Other Services	11,500	11,300	11,000	200	500
Government	30,500	30,400	29,600	100	900
Federal	2,900	2,900	3,000	0	-100
State	11,800	11,800	11,300	0	500
Local	15,800	15,700	15,300	100	500

¹ Place of work basis. p Preliminary. r Revised.

NOTE: Estimates prepared by the U.S. Department of Labor, Bureau of Labor Statistics.

Estimates adjusted to a 2024 benchmark. Based on the North American Industry Classification System (NAICS), 2022.

**NONAGRICULTURAL WAGE AND SALARY EMPLOYMENT
FOR ALABAMA METROPOLITAN STATISTICAL AREAS (MSA'S)^{1/}**

<u>MONTGOMERY MSA</u>	May p 2025	Apr r 2025	May r 2024	Net Change From :	
				Apr r 2025	May r 2024
TOTAL NONAGRICULTURAL EMPLOYMENT	188,600	188,100	187,100	500	1,500
GOODS PRODUCING	28,600	28,400	28,000	200	600
Mining, Logging, and Construction	7,800	7,600	7,500	200	300
Manufacturing	20,800	20,800	20,500	0	300
SERVICE PROVIDING	160,000	159,700	159,100	300	900
Trade, Transportation, and Utilities	31,100	31,000	30,200	100	900
Wholesale Trade	6,300	6,300	6,300	0	0
Retail Trade	18,000	18,000	17,400	0	600
General Merchandise Retailers	5,000	5,000	4,900	0	100
Transportation, Warehousing and Utilities	6,800	6,700	6,500	100	300
Information	1,800	1,800	2,000	0	-200
Financial Activities	8,800	8,800	8,700	0	100
Finance and Insurance	6,300	6,300	6,200	0	100
Professional and Business Services	21,400	21,600	22,400	-200	-1,000
Private Education and Health Services	21,600	21,700	21,400	-100	200
Health Care and Social Assistance	17,000	16,900	16,400	100	600
Leisure and Hospitality	18,300	17,800	18,000	500	300
Food Services and Drinking Places	13,800	13,600	13,600	200	200
Other Services	9,700	9,600	9,600	100	100
Government	47,300	47,400	46,800	-100	500
Federal	7,900	8,100	8,100	-200	-200
State	25,000	25,000	24,600	0	400
Local	14,400	14,300	14,100	100	300

1 Place of work basis. p Preliminary. r Revised.

NOTE: Estimates prepared by the U.S. Department of Labor, Bureau of Labor Statistics.

Estimates adjusted to a 2024 benchmark. Based on the North American Industry Classification System (NAICS), 2022.

<u>TUSCALOOSA MSA</u>	May p 2025	Apr r 2025	May r 2024	Net Change From :	
				Apr r 2025	May r 2024
TOTAL NONAGRICULTURAL EMPLOYMENT	118,700	118,900	117,600	-200	1,100
GOODS PRODUCING	27,500	27,400	27,500	100	0
Mining, Logging, and Construction	7,600	7,500	7,400	100	200
Manufacturing	19,900	19,900	20,100	0	-200
SERVICE PROVIDING	91,200	91,500	90,100	-300	1,100
Trade, Transportation, and Utilities	17,800	17,900	17,600	-100	200
Wholesale Trade	2,400	2,400	2,300	0	100
Retail Trade	11,900	12,000	11,600	-100	300
Transportation, Warehousing and Utilities	3,500	3,500	3,700	0	-200
Information	700	700	700	0	0
Financial Activities	4,000	4,000	4,000	0	0
Professional and Business Services	9,900	10,000	10,300	-100	-400
Private Education and Health Services	11,000	11,000	10,700	0	300
Leisure and Hospitality	12,600	12,600	11,700	0	900
Other Services	4,400	4,400	4,300	0	100
Government	30,800	30,900	30,800	-100	0
Federal	2,200	2,200	2,200	0	0
State	15,500	15,500	14,800	0	700
Local	13,100	13,200	13,800	-100	-700

1 Place of work basis. p Preliminary. r Revised.

NOTE: Estimates prepared by the U.S. Department of Labor, Bureau of Labor Statistics.

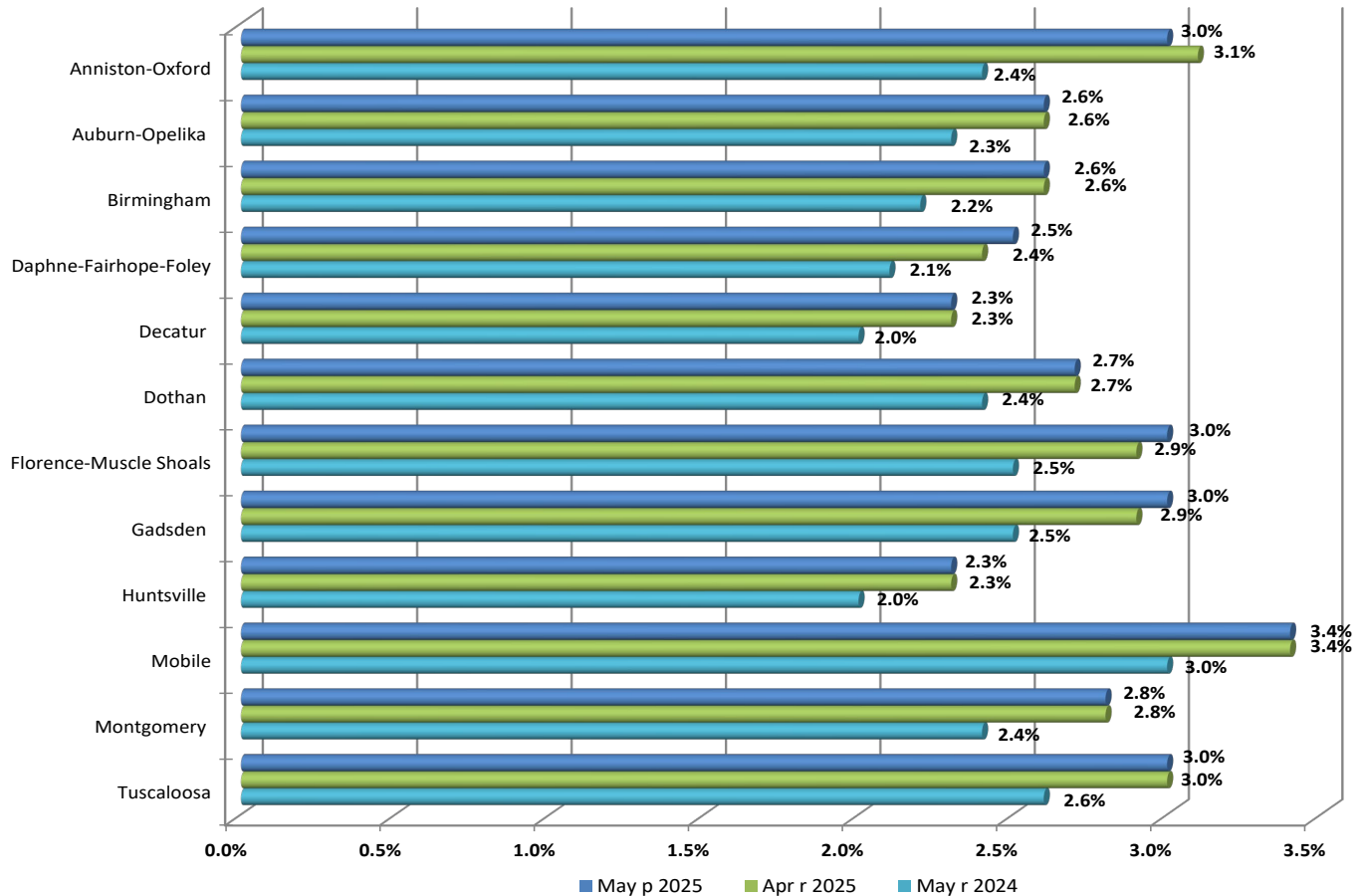
Estimates adjusted to a 2024 benchmark. Based on the North American Industry Classification System (NAICS), 2022.

ALABAMA, U.S., & COUNTY AREA CIVILIAN LABOR FORCE DATA

Area	Civilian Labor Force			Employment			Unemployment			Unemployment Rate		
	May p 2025	Apr r 2025	May r 2024	May p 2025	Apr r 2025	May r 2024	May p 2025	Apr r 2025	May r 2024	May p 2025	Apr r 2025	May r 2024
Alabama (Seasonally Adjusted)	2,384,601	2,380,386	2,339,921	2,306,355	2,301,630	2,272,043	78,246	78,756	67,878	3.3%	3.3%	2.9%
Alabama (Not Seasonally Adjusted)	2,384,336	2,400,498	2,330,749	2,318,327	2,334,524	2,274,817	66,009	65,974	55,932	2.8%	2.7%	2.4%
Autauga	28,956	29,146	28,343	28,263	28,467	27,736	693	679	607	2.4%	2.3%	2.1%
Baldwin	118,469	118,584	116,569	115,516	115,703	114,116	2,953	2,881	2,453	2.5%	2.4%	2.1%
Barbour	8,467	8,612	8,496	8,172	8,316	8,219	295	296	277	3.5%	3.4%	3.3%
Bibb	8,781	8,843	8,664	8,543	8,625	8,463	238	218	201	2.7%	2.5%	2.3%
Blount	27,016	27,268	26,730	26,380	26,640	26,182	636	628	548	2.4%	2.3%	2.1%
Bullock	4,168	4,228	4,124	4,036	4,088	4,013	132	140	111	3.2%	3.3%	2.7%
Butler	8,045	8,153	7,846	7,776	7,879	7,603	269	274	243	3.3%	3.4%	3.1%
Calhoun	50,412	50,827	49,076	48,892	49,244	47,875	1,520	1,583	1,201	3.0%	3.1%	2.4%
Chambers	18,502	18,681	18,034	18,025	18,189	17,635	477	492	399	2.6%	2.6%	2.2%
Cherokee	10,595	10,609	10,260	10,309	10,339	10,013	286	270	247	2.7%	2.5%	2.4%
Chilton	20,224	20,383	19,982	19,706	19,878	19,543	518	505	439	2.6%	2.5%	2.2%
Choctaw	4,084	4,159	4,133	3,907	3,969	3,991	177	190	142	4.3%	4.6%	3.4%
Clarke	8,278	8,397	8,246	7,919	8,028	7,940	359	369	306	4.3%	4.4%	3.7%
Clay	6,003	6,010	5,897	5,826	5,842	5,755	177	168	142	2.9%	2.8%	2.4%
Cleburne	6,479	6,535	6,305	6,310	6,378	6,171	169	157	134	2.6%	2.4%	2.1%
Coffee	24,099	24,247	23,758	23,449	23,602	23,165	650	645	593	2.7%	2.7%	2.5%
Colbert	26,744	26,791	25,727	25,900	25,984	25,085	844	807	642	3.2%	3.0%	2.5%
Conecuh	3,898	3,952	3,893	3,750	3,805	3,764	148	147	129	3.8%	3.7%	3.3%
Coosa	4,421	4,446	4,386	4,289	4,310	4,283	132	136	103	3.0%	3.1%	2.3%
Covington	15,167	15,377	14,833	14,721	14,946	14,436	446	431	397	2.9%	2.8%	2.7%
Crenshaw	5,406	5,496	5,393	5,244	5,338	5,247	162	158	146	3.0%	2.9%	2.7%
Cullman	40,322	40,445	39,837	39,318	39,472	39,012	1,004	973	825	2.5%	2.4%	2.1%
Dale	19,264	19,418	18,871	18,664	18,823	18,358	600	595	513	3.1%	3.1%	2.7%
Dallas	14,416	14,615	14,330	13,746	13,927	13,749	670	688	581	4.6%	4.7%	4.1%
DeKalb	32,675	32,923	31,968	31,884	32,136	31,280	791	787	688	2.4%	2.4%	2.2%
Elmore	43,468	43,682	42,525	42,481	42,716	41,674	987	966	851	2.3%	2.2%	2.0%
Escambia	13,114	13,249	12,934	12,688	12,805	12,522	426	444	412	3.2%	3.4%	3.2%
Etowah	43,200	43,135	42,057	41,907	41,871	41,014	1,293	1,264	1,043	3.0%	2.9%	2.5%
Fayette	6,616	6,637	6,575	6,430	6,464	6,393	186	173	182	2.8%	2.6%	2.8%
Franklin	14,084	14,129	13,478	13,727	13,784	13,163	357	345	315	2.5%	2.4%	2.3%
Geneva	11,627	11,706	11,412	11,319	11,393	11,149	308	313	263	2.6%	2.7%	2.3%
Greene	2,404	2,425	2,321	2,255	2,272	2,213	149	153	108	6.2%	6.3%	4.7%
Hale	5,540	5,666	5,403	5,308	5,439	5,234	232	227	169	4.2%	4.0%	3.1%
Henry	7,959	8,036	7,828	7,741	7,820	7,631	218	216	197	2.7%	2.7%	2.5%
Houston	49,026	49,171	48,017	47,680	47,851	46,872	1,346	1,320	1,145	2.7%	2.7%	2.4%
Jackson	21,142	21,258	21,030	20,461	20,591	20,476	681	667	554	3.2%	3.1%	2.6%
Jefferson	323,819	326,528	319,370	314,756	317,319	311,665	9,063	9,209	7,705	2.8%	2.8%	2.4%
Lamar	5,312	5,365	5,219	5,147	5,203	5,073	165	162	146	3.1%	3.0%	2.8%
Lauderdale	44,644	44,786	43,036	43,334	43,507	41,959	1,310	1,279	1,077	2.9%	2.9%	2.5%
Lawrence	16,149	16,300	15,628	15,756	15,895	15,298	393	405	330	2.4%	2.5%	2.1%
Lee	90,072	91,108	88,093	87,798	88,880	86,103	2,274	2,228	1,990	2.5%	2.4%	2.3%
Limestone	58,208	58,674	56,079	56,856	57,311	54,976	1,352	1,363	1,103	2.3%	2.3%	2.0%
Lowndes	3,806	3,901	3,739	3,633	3,713	3,596	173	188	143	4.5%	4.8%	3.8%
Macon	7,705	7,818	7,533	7,399	7,514	7,276	306	304	257	4.0%	3.9%	3.4%
Madison	228,803	228,135	218,235	221,515	222,855	213,852	5,288	5,280	4,383	2.3%	2.3%	2.0%
Marengo	7,416	7,538	7,332	7,147	7,268	7,095	269	270	237	3.6%	3.6%	3.2%
Marion	12,182	12,267	12,148	11,806	11,887	11,831	376	380	317	3.1%	3.1%	2.6%
Marshall	45,451	45,820	44,315	44,376	44,724	43,381	1,075	1,096	934	2.4%	2.4%	2.1%
Mobile	191,044	191,621	184,060	184,643	185,138	178,598	6,401	6,483	5,462	3.4%	3.4%	3.0%
Monroe	6,529	6,667	6,367	6,212	6,341	6,130	317	326	237	4.9%	4.9%	3.7%
Montgomery	105,720	106,297	103,327	102,551	103,036	100,593	3,169	3,261	2,734	3.0%	3.1%	2.6%
Morgan	61,420	61,782	59,409	60,010	60,402	58,202	1,410	1,380	1,207	2.3%	2.2%	2.0%
Perry	2,398	2,420	2,395	2,266	2,276	2,281	132	144	114	5.5%	6.0%	4.8%
Pickens	6,905	7,031	6,748	6,652	6,757	6,544	253	274	204	3.7%	3.9%	3.0%
Pike	15,554	15,820	15,097	15,080	15,309	14,682	474	511	415	3.0%	3.2%	2.7%
Randolph	8,565	8,612	8,584	8,290	8,347	8,347	275	265	237	3.2%	3.1%	2.8%
Russell	23,000	23,067	22,528	22,243	22,331	21,917	757	736	611	3.3%	3.2%	2.7%
Shelby	124,336	125,205	122,721	121,613	122,516	120,425	2,723	2,689	2,296	2.2%	2.1%	1.9%
St. Clair	45,966	46,247	45,400	44,926	45,236	44,481	1,040	1,011	919	2.3%	2.2%	2.0%
Sumter	4,384	4,466	4,437	4,205	4,287	4,277	179	179	160	4.1%	4.0%	3.6%
Talladega	35,059	35,448	34,496	33,949	34,355	33,597	1,110	1,093	899	3.2%	3.1%	2.6%
Tallapoosa	16,701	16,725	16,488	16,190	16,216	16,057	511	509	431	3.1%	3.0%	2.6%
Tuscaloosa	113,814	114,919	111,161	110,583	111,716	108,377	3,231	3,203	2,784	2.8%	2.8%	2.5%
Walker	27,380	27,586	27,031	26,639	26,850	26,384	741	736	647	2.7%	2.7%	2.4%
Washington	7,402	7,493	7,250	7,160	7,266	7,035	242	227	215	3.3%	3.0%	3.0%
Wilcox	3,453	3,546	3,406	3,274	3,356	3,240	179	190	166	5.2%	5.4%	4.9%
Winston	10,070	10,062	9,837	9,775	9,779	9,570	295	283	267	2.9%	2.8%	2.7%
United States (Seasonally Adjusted)	170,510,000	171,135,000	167,799,000	163,273,000	163,969,000	161,164,000	7,237,000	7,166,000	6,635,000	4.2%	4.2%	4.0%
United States (Not Seasonally Adj.)	170,216,000	170,650,000	167,576,000	163,401,000	164,069,000	161,341,000	6,815,000	6,582,000	6,235,000	4.0%	3.9%	3.7%

Counties and Metropolitan Statistical Areas are comparable to the not seasonally adjusted labor force data.

Estimates prepared by the Alabama Department of Workforce in cooperation with the Bureau of Labor Statistics, based on a 2024 benchmark.

ALABAMA METROPOLITAN STATISTICAL AREA UNEMPLOYMENT RATES


Estimates prepared by the Alabama Department of Workforce in Cooperation with the Bureau of Labor Statistics, based on 2024 benchmark.

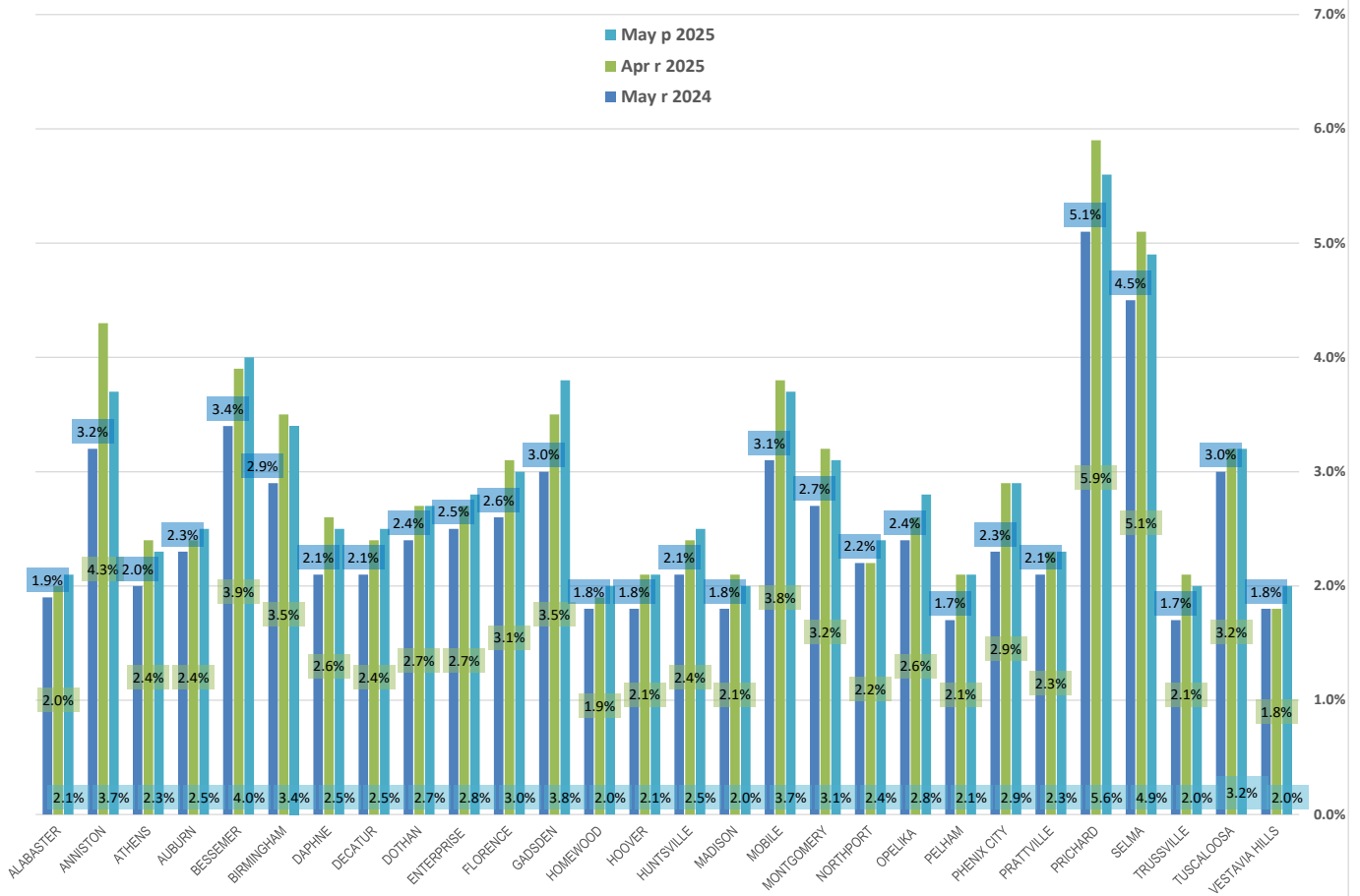
**METROPOLITAN STATISTICAL AREAS
CIVILIAN LABOR FORCE DATA**

Area	Civilian Labor Force			Employment			Unemployment			Unemployment Rate		
	May p 2025	Apr r 2025	May r 2024	May p 2025	Apr r 2025	May r 2024	May p 2025	Apr r 2025	May r 2024	May p 2025	Apr r 2025	May r 2024
Anniston-Oxford MSA	50,412	50,827	49,076	48,892	49,244	47,875	1,520	1,583	1,201	3.0%	3.1%	2.4%
Auburn-Opelika MSA	97,777	98,926	95,626	95,197	96,394	93,379	2,580	2,532	2,247	2.6%	2.6%	2.3%
Birmingham MSA	577,522	582,060	569,898	562,563	567,064	557,143	14,959	14,996	12,755	2.6%	2.6%	2.2%
Daphne-Fairhope-Foley MSA	118,469	118,584	116,569	115,516	115,703	114,116	2,953	2,881	2,453	2.5%	2.4%	2.1%
Decatur MSA	77,569	78,082	75,037	75,766	76,297	73,500	1,803	1,785	1,537	2.3%	2.3%	2.0%
Dothan MSA	68,612	68,913	67,257	66,740	67,064	65,652	1,872	1,849	1,605	2.7%	2.7%	2.4%
Florence-Muscle Shoals MSA	71,388	71,577	68,763	69,234	69,491	67,044	2,154	2,086	1,719	3.0%	2.9%	2.5%
Gadsden MSA	43,200	43,135	42,057	41,907	41,871	41,014	1,293	1,264	1,043	3.0%	2.9%	2.5%
Huntsville MSA	285,011	286,809	274,314	278,371	280,166	268,828	6,640	6,643	5,486	2.3%	2.3%	2.0%
Mobile MSA	191,044	191,621	184,060	184,643	185,138	178,598	6,401	6,483	5,462	3.4%	3.4%	3.0%
Montgomery MSA	181,950	183,026	177,934	176,928	177,932	173,599	5,022	5,094	4,335	2.8%	2.8%	2.4%
Tuscaloosa MSA	128,663	130,041	125,633	124,798	126,184	122,368	3,865	3,857	3,265	3.0%	3.0%	2.6%

Counties and Metropolitan Statistical Areas are comparable to the not seasonally adjusted labor force data.

Estimates prepared by the Alabama Department of Workforce in cooperation with the Bureau of Labor Statistics, based on a 2024 benchmark.

SELECTED CITY UNEMPLOYMENT RATES



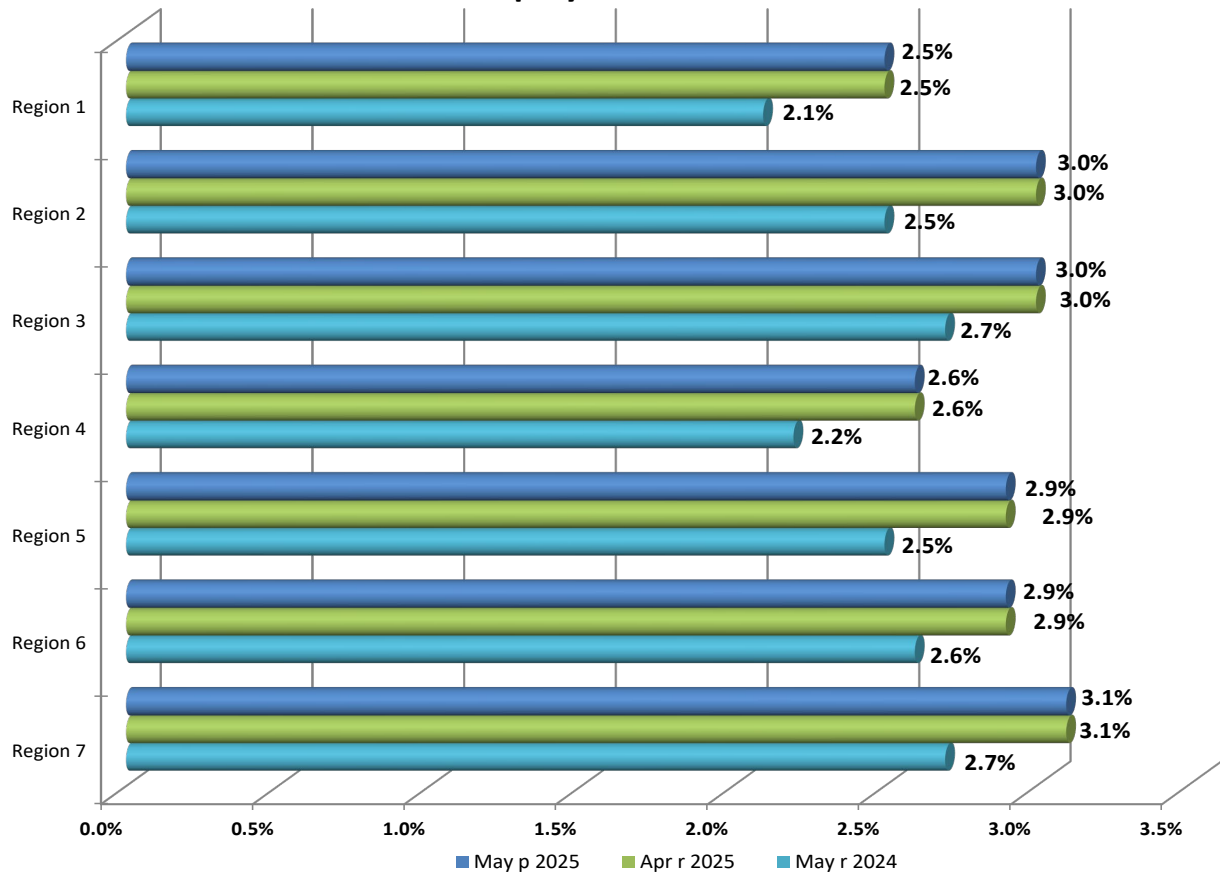
CITY AREAS CIVILIAN LABOR FORCE DATA

Area	Civilian Labor Force			Employment			Unemployment			Unemployment Rate		
	May p 2025	Apr r 2025	May r 2024	May p 2025	Apr r 2025	May r 2024	May p 2025	Apr r 2025	May r 2024	May p 2025	Apr r 2025	May r 2024
ALABASTER CITY	18,194	18,316	17,969	17,808	17,941	17,634	386	375	335	2.1%	2.0%	1.9%
ANNISTON CITY	8,356	8,466	8,140	8,048	8,105	7,880	308	361	260	3.7%	4.3%	3.2%
ATHENS CITY	15,693	15,833	15,126	15,327	15,450	14,820	366	383	306	2.3%	2.4%	2.0%
AUBURN CITY	40,356	40,837	39,514	39,360	39,846	38,601	996	991	913	2.5%	2.4%	2.3%
BESSEMER CITY	9,876	9,953	9,720	9,482	9,560	9,389	394	393	331	4.0%	3.9%	3.4%
BIRMINGHAM CITY	95,293	96,136	93,848	92,014	92,762	91,111	3,279	3,374	2,737	3.4%	3.5%	2.9%
DAPHNE CITY	14,778	14,810	14,535	14,403	14,426	14,229	375	384	306	2.5%	2.6%	2.1%
DECATUR CITY	28,643	28,798	27,669	27,923	28,106	27,082	720	692	587	2.5%	2.4%	2.1%
DOTHAN CITY	32,504	32,632	31,845	31,628	31,745	31,093	876	887	752	2.7%	2.7%	2.4%
ENTERPRISE CITY	12,584	12,652	12,400	12,237	12,316	12,087	347	336	313	2.8%	2.7%	2.5%
FLORENCE CITY	18,881	18,962	18,190	18,307	18,380	17,726	574	582	464	3.0%	3.1%	2.6%
GADSDEN CITY	12,911	12,859	12,533	12,424	12,414	12,160	487	445	373	3.8%	3.5%	3.0%
HOMESWOOD CITY	14,835	14,941	14,656	14,532	14,650	14,389	303	291	267	2.0%	1.9%	1.8%
HOOVER CITY	50,141	50,570	49,529	49,113	49,503	48,631	1,028	1,067	898	2.1%	2.1%	1.8%
HUNTSVILLE CITY	124,233	124,897	119,488	121,158	121,896	116,971	3,075	3,001	2,517	2.5%	2.4%	2.1%
MADISON CITY	32,809	33,038	31,623	32,140	32,348	31,038	669	690	585	2.0%	2.1%	1.8%
MOBILE CITY	88,248	88,523	84,850	84,963	85,191	82,182	3,285	3,332	2,668	3.7%	3.8%	3.1%
MONTGOMERY CITY	91,294	91,806	89,194	88,456	88,875	86,768	2,838	2,931	2,426	3.1%	3.2%	2.7%
NORTHPORT CITY	15,776	15,905	15,420	15,395	15,553	15,088	381	352	332	2.4%	2.2%	2.2%
OPELIKA CITY	16,468	16,653	16,088	16,015	16,213	15,706	453	440	382	2.8%	2.6%	2.4%
PELHAM CITY	14,605	14,706	14,392	14,291	14,397	14,152	314	309	240	2.1%	2.1%	1.7%
PHENIX CITY	17,093	17,179	16,724	16,597	16,688	16,339	496	491	385	2.9%	2.9%	2.3%
PRATTVILLE CITY	19,730	19,860	19,305	19,268	19,405	18,908	462	455	397	2.3%	2.3%	2.1%
PRICHARD CITY	6,502	6,536	6,255	6,136	6,152	5,935	366	384	320	5.6%	5.9%	5.1%
SELMA CITY	6,427	6,530	6,402	6,114	6,195	6,116	313	335	286	4.9%	5.1%	4.5%
TRUSSVILLE CITY	13,978	14,104	13,789	13,695	13,805	13,561	283	299	228	2.0%	2.1%	1.7%
TUSCALOOSA CITY	51,163	51,708	50,021	49,522	50,030	48,534	1,641	1,678	1,487	3.2%	3.2%	3.0%
VESTAVIA HILLS CITY	18,755	18,879	18,544	18,384	18,533	18,203	371	346	341	2.0%	1.8%	1.8%

City Areas are comparable to the not seasonally adjusted labor force data.

Estimates prepared by the Alabama Department of Workforce in cooperation with the Bureau of Labor Statistics, based on a 2024 benchmark.

Alabama Workforce Regions Unemployment Rates



Areas are comparable to the not seasonally adjusted labor force data.

WORKFORCE REGIONS CIVILIAN LABOR FORCE DATA

Area	Civilian Labor Force			Employment			Unemployment			Unemployment Rate		
	May p 2025	Apr r 2025	May r 2024	May p 2025	Apr r 2025	May r 2024	May p 2025	Apr r 2025	May r 2024	May p 2025	Apr r 2025	May r 2024
Region 1	609,894	613,372	590,727	594,718	598,327	578,085	15,176	15,045	12,642	2.5%	2.5%	2.1%
Region 2	160,313	161,176	156,675	155,483	156,376	152,772	4,830	4,800	3,903	3.0%	3.0%	2.5%
Region 3	161,172	162,890	157,860	156,270	158,031	153,669	4,902	4,859	4,191	3.0%	3.0%	2.7%
Region 4	568,741	573,217	561,234	554,020	558,439	548,680	14,721	14,778	12,554	2.6%	2.6%	2.2%
Region 5	363,333	366,134	355,845	352,920	355,663	346,913	10,413	10,471	8,932	2.9%	2.9%	2.5%
Region 6	164,614	166,036	161,551	159,846	161,277	157,362	4,768	4,759	4,189	2.9%	2.9%	2.6%
Region 7	356,271	357,668	346,858	345,069	346,411	337,336	11,202	11,257	9,522	3.1%	3.1%	2.7%

Areas are comparable to the not seasonally adjusted labor force data.

Estimates prepared by the Alabama Department of Workforce in cooperation with the Bureau of Labor Statistics, based on a 2024 benchmark.

Alabama Counties Ranked in Descending Order Unemployment Rates

Current May 2025

2024 Annual Average

Rank	Area	Rate
1	Greene County, AL	6.2%
2	Perry County, AL	5.5%
3	Wilcox County, AL	5.2%
4	Monroe County, AL	4.9%
5	Dallas County, AL	4.6%
6	Lowndes County, AL	4.5%
7	Choctaw County, AL	4.3%
7	Clarke County, AL	4.3%
9	Hale County, AL	4.2%
10	Sumter County, AL	4.1%
11	Macon County, AL	4.0%
12	Conecuh County, AL	3.8%
13	Pickens County, AL	3.7%
14	Marengo County, AL	3.6%
15	Barbour County, AL	3.5%
16	Mobile County, AL	3.4%
17	Butler County, AL	3.3%
17	Russell County, AL	3.3%
17	Washington County, AL	3.3%
20	Bullock County, AL	3.2%
20	Colbert County, AL	3.2%
20	Escambia County, AL	3.2%
20	Jackson County, AL	3.2%
20	Randolph County, AL	3.2%
20	Talladega County, AL	3.2%
26	Dale County, AL	3.1%
26	Lamar County, AL	3.1%
26	Marion County, AL	3.1%
26	Tallapoosa County, AL	3.1%
30	Calhoun County, AL	3.0%
30	Coosa County, AL	3.0%
30	Crenshaw County, AL	3.0%
30	Etowah County, AL	3.0%
30	Montgomery County, AL	3.0%
30	Pike County, AL	3.0%
36	Clay County, AL	2.9%
36	Covington County, AL	2.9%
36	Lauderdale County, AL	2.9%
36	Winston County, AL	2.9%
40	Fayette County, AL	2.8%
40	Jefferson County, AL	2.8%
40	Tuscaloosa County, AL	2.8%
43	Bibb County, AL	2.7%
43	Cherokee County, AL	2.7%
43	Coffee County, AL	2.7%
43	Henry County, AL	2.7%
43	Houston County, AL	2.7%
43	Walker County, AL	2.7%
49	Chambers County, AL	2.6%
49	Chilton County, AL	2.6%
49	Cleburne County, AL	2.6%
49	Geneva County, AL	2.6%
53	Baldwin County, AL	2.5%
53	Cullman County, AL	2.5%
53	Franklin County, AL	2.5%
53	Lee County, AL	2.5%
57	Autauga County, AL	2.4%
57	Blount County, AL	2.4%
57	DeKalb County, AL	2.4%
57	Lawrence County, AL	2.4%
57	Marshall County, AL	2.4%
62	Elmore County, AL	2.3%
62	Limestone County, AL	2.3%
62	Madison County, AL	2.3%
62	Morgan County, AL	2.3%
62	St. Clair County, AL	2.3%
67	Shelby County, AL	2.2%

Rank	Area	Rate
1	Greene County, AL	6.7%
1	Perry County, AL	6.7%
3	Wilcox County, AL	6.2%
4	Dallas County, AL	5.5%
5	Clarke County, AL	5.2%
6	Monroe County, AL	5.0%
7	Lowndes County, AL	4.7%
7	Sumter County, AL	4.7%
9	Choctaw County, AL	4.5%
10	Macon County, AL	4.4%
11	Barbour County, AL	4.3%
11	Hale County, AL	4.3%
13	Conecuh County, AL	4.2%
14	Escambia County, AL	4.1%
15	Marengo County, AL	4.0%
16	Butler County, AL	3.9%
16	Pickens County, AL	3.9%
18	Mobile County, AL	3.8%
19	Bullock County, AL	3.7%
20	Randolph County, AL	3.6%
20	Russell County, AL	3.6%
20	Washington County, AL	3.6%
23	Dale County, AL	3.5%
23	Jackson County, AL	3.5%
23	Marion County, AL	3.5%
23	Pike County, AL	3.5%
27	Crenshaw County, AL	3.4%
27	Fayette County, AL	3.4%
27	Lamar County, AL	3.4%
27	Montgomery County, AL	3.4%
27	Talladega County, AL	3.4%
27	Tallapoosa County, AL	3.4%
33	Colbert County, AL	3.3%
33	Coosa County, AL	3.3%
33	Covington County, AL	3.3%
33	Etowah County, AL	3.3%
33	Winston County, AL	3.3%
38	Calhoun County, AL	3.2%
38	Henry County, AL	3.2%
38	Lauderdale County, AL	3.2%
41	Cherokee County, AL	3.1%
41	Coffee County, AL	3.1%
41	Houston County, AL	3.1%
41	Jefferson County, AL	3.1%
41	Tuscaloosa County, AL	3.1%
41	Walker County, AL	3.1%
47	Bibb County, AL	3.0%
47	Clay County, AL	3.0%
49	Franklin County, AL	2.9%
49	Geneva County, AL	2.9%
51	Chambers County, AL	2.8%
51	Chilton County, AL	2.8%
51	Cleburne County, AL	2.8%
51	Lee County, AL	2.8%
55	Autauga County, AL	2.7%
55	Baldwin County, AL	2.7%
55	Blount County, AL	2.7%
55	Cullman County, AL	2.7%
55	DeKalb County, AL	2.7%
55	Lawrence County, AL	2.7%
55	Marshall County, AL	2.7%
62	Elmore County, AL	2.6%
62	Madison County, AL	2.6%
62	Morgan County, AL	2.6%
62	St. Clair County, AL	2.6%
66	Limestone County, AL	2.5%
67	Shelby County, AL	2.4%

Release Schedule

Local Area Unemployment Statistics & Current Employment Statistics 2025 Publication Schedule	
Reference Month	Publication Date
January	Monday, 3/17/2025, 8:00AM
February	Friday, 3/28/2025, 8:00AM
March	Friday, 4/18/2025, 8:00AM
April	Friday, 5/16/2025, 8:00AM <i>Southeastern States Map available Wednesday, 5/21/2025</i>
May	Friday, 6/20/2025, 8:00AM <i>Southeastern States Map available Tuesday, 6/24/2025</i>
June	Friday, 7/18/2025, 8:00AM
July	Friday, 8/15/2025, 8:00AM <i>Southeastern States Map available Tuesday, 8/19/2025</i>
August	Friday, 9/19/2025, 8:00AM
September	Friday, 10/17/2025, 8:00AM <i>Southeastern States Map available Tuesday, 10/21/2025</i>
October	Friday, 11/21/2025, 8:00AM
November	Friday, 12/19/2025, 8:00AM
December	Friday, 1/23/2026, 8:00AM <i>Southeastern States Map available Tuesday, 1/27/2026</i>



Technical Support

Local Area Unemployment Statistics
 Labor Market Information Division
 Alabama Department of Workforce
 649 Monroe St, Room 4427
 Montgomery, AL 36131-2280

334-956-7485 phone/fax

<http://www2.labor.alabama.gov/Laus/Default.aspx> website

An Equal Opportunity Employer / Program
 Auxiliary aids and services available upon request to individuals with disabilities.
 Dial 711 for TTY accessibility.