

Alabama

Labor Market Information News

Table of Contents

Economic Brief	1
LMI Definitions	2
Consumer Price Index	6
Current Employment Statistics	
Employment	3-5, 7-14
Hours and Earnings	6
Local Area Unemployment Statistics	15-19
Release Schedule	20
Technical Support	20

**March 2024
Publication**



Economic Brief

Alabama's seasonally adjusted labor force participation rate, at 57.4 percent in January, was unchanged from the prior month's revised rate and was higher than 56.9 percent recorded a year ago. The civilian labor force was 2,327,861 in January, compared to 2,325,305 in December 2023 and 2,284,000 in January 2023.

The similar national labor force participation rate for January, at 62.5 percent, was unchanged from the prior month's rate and was higher than the year ago rate of 62.4 percent.

The State's seasonally adjusted unemployment rate, at 2.9 percent in January, was higher than the December revised rate of 2.8 percent and was higher than the 2.4 percent recorded a year ago. January's rate represented 66,591 unemployed persons, compared to 64,101 in December 2023 and 53,887 in January 2023.

The comparable national unemployment rate for January, at 3.7 percent, was unchanged from the prior month's 3.7 percent and was higher than the year ago rate of 3.4 percent.

	Not Seasonally Adjusted			Seasonally Adjusted		
	Jan p 2024	Dec r 2023	Jan r 2023	Jan p 2024	Dec r 2023	Jan r 2023
Civilian Labor Force ¹	2,312,952	2,324,381	2,270,889	2,327,861	2,325,305	2,284,000
Employment	2,235,236	2,262,732	2,210,999	2,261,270	2,261,204	2,230,113
Unemployment	77,716	61,649	59,890	66,591	64,101	53,887
AL Unemployment Rate	3.4	2.7	2.6	2.9	2.8	2.4
AL Labor Force Participation Rate	57.1	57.4	56.5	57.4	57.4	56.9
U.S. Unemployment Rate	4.1	3.5	3.9	3.7	3.7	3.4
U.S. Labor Force Participation Rate	62.2	62.2	62.1	62.5	62.5	62.4
Wage and Salary Employment ²	2,166,500	2,194,400	2,128,200	2,185,300	2,181,000	2,148,900

¹ Place of residence basis. ² Place of work basis. ³ Preliminary. ⁴ Revised.

Estimates prepared by the Alabama Department of Labor in cooperation with the Bureau of Labor Statistics, based on a 2023 benchmark.

Alabama's not seasonally adjusted wage and salary employment, totaling 2,166,500 in January, decreased 27,900 over the month. Employment gains occurred in information (+200). Monthly losses were in trade, transportation, and utilities (-9,400); private education and health services (-4,200); government (-4,200); leisure and hospitality (-3,300); construction (-2,000); manufacturing (-1,900); professional and business services (-1,700); financial activities (-800); other services (-500); and mining and logging (-100).

Over the past twelve months, total nonagricultural wage and salary employment increased 38,300. Annual gains were in government (+10,400); private education and health services (+9,100); manufacturing (+5,500); trade, transportation, and utilities (+3,900); construction (+3,900); other services (+2,500); leisure and hospitality (+1,400); professional and business services (+1,200); financial activities (+600); and information (+200). Annual losses were in mining and logging (-400).

LMI Definitions

American Community Survey (ACS): The ACS is an ongoing survey that provides data every year by giving communities the current information they need to plan investments and services. Information from the survey generates data that help determine how more than \$400 billion in federal and state funds are distributed each year.

Bureau of Labor Statistics (BLS): The Bureau is a division of the U.S. Department of Labor and functions as the principal data gathering agency of the federal government in the field of labor economics. The BLS collects, processes, analyzes and disseminates data relating to employment, unemployment, the labor force, productivity, prices, family expenditures, wages, industrial relations, and occupational safety and health.

Census Tract: A small relatively permanent statistical subdivision of a county delineated by local committees of census data users for the purpose of collecting and presenting census data. It is worth noting that census tracts conform to county lines (that is they are always subsets of a county), but may not follow zip code lines.

Civilian Labor Force: The civilian labor force comprises the total of all civilians age 16 and older classified as employed or unemployed, or seeking employment. This gives employers a measure of the labor pool.

Consumer Price Index (CPI): A measure of the average change in prices over time for a set group of goods and services. The Bureau of Labor Statistics publishes CPIs for two population groups: (1) for all urban consumers (CPI-U) which covers approximately 80 percent of the total population and (2) for all urban wage earners and clerical workers (CPI-W) which covers 32 percent of the total population. Among the CPI components are the costs of housing, food, transportation, and energy. While the CPI is not technically a cost of living index, it is often used to indicate changes in the cost-of-living.

Current Employment Statistics (CES) Survey: A monthly survey of nonfarm business establishments used to collect nonfarm payroll employment, and worker hours and earnings by industry and area. Through the Federal/State cooperative effort, these data are used to compute current monthly employment, and hours and earnings estimates, by industry, for the nation, the 50 states and the District of Columbia, and over 250 Metropolitan Statistical Areas (MSA's).

Current Population Survey (CPS): A monthly household survey of the civilian non-institutional population of the United States. This BLS survey provides labor market statistics (e.g., employment, unemployment and wages) by industry, occupation, and demographic characteristics. The Bureau of the Census collects data for this survey in cooperation with BLS.

CES Employment: A count of all persons who worked full or part time or received pay from a nonagricultural employer for any part of the pay period that included the 12th day of the month. Because this count comes from a survey of employers, persons who work for two different companies could be counted twice. Therefore, non-farm payroll employment is really a count of the number of jobs rather than the number of persons employed. This count is also based on where the jobs are located, regardless of where the workers reside. Non-farm payroll employment data are collected and compiled by Current Employment Statistics (CES) Survey.

Labor Market Information (LMI): A body of knowledge that includes a variety of economic, social, and demographic information. This information describes current conditions and forecasts employment conditions at a future date. LMI is comprised of population data, labor force data, industry data, occupational data, general economic trends, and career data.

Local Area Unemployment Statistics (LAUS): A federal-state cooperative program, which produces monthly estimates of total employment and unemployment for approximately 7,500 areas.

Metropolitan Area (MA): A Core Based Statistical Area associated with at least one urbanized area that has a population of at least 50,000. The Metropolitan Statistical Area comprises the central county or counties containing the core, plus adjacent outlying counties having a high degree of social and economic integration with the central county as measured through commuting.

North American Industrial Classification System (NAICS): A system of identifying industry activity, NAICS is replacing the U.S. Standard Industrial Classification (SIC) system. NAICS will reshape the way we track our industries. NAICS was developed jointly by the U.S., Canada, and Mexico to provide new comparability in statistics about business activity across North America.

Occupational Employment Statistics (OES): A federal state cooperative program, which collects detailed occupational data by industry in a three-year cycle. The OES survey is an annual mail survey measuring occupational employment and occupational wage rates for wage and salary workers in nonfarm establishments, by industry. On a national level, the survey samples approximately 400,000 establishments per year, taking 3 years to fully collect the sample of 1.2 million establishments.

Seasonal Adjustment: A statistical technique that eliminates the influences of weather, holidays, the opening and closing of schools, and other recurring seasonal events from economic time series. This permits easier observation and analysis of cyclical, trend, and other nonseasonal movements in the data.

Standard Occupational Classification (SOC): This is an occupational coding system that was presented by the Bureau of Labor Statistics (BLS) to replace and consolidate several previous coding systems used to classify occupations. The consolidated coding systems include the Occupational Employment Statistics (OES), the Dictionary of Occupational Titles (DOT), and the grouping of occupational titles used by the Census based on survey responses.

Workforce Regions: State specific geographical area, designated by the governor, within which employment and training services are provided under the Workforce Innovation and Opportunity Act (WIOA) in Alabama.

EMPLOYEES IN NONAGRICULTURAL INDUSTRIES IN ALABAMA 1/

(in thousands)

INDUSTRY				NET CHANGE FROM:		PERCENT CHANGE FROM:	
	Jan p 2024	Dec r 2023	Jan r 2023	Dec r 2023	Jan r 2023	Dec r 2023	Jan r 2023
Total Nonfarm	2166.5	2194.4	2128.2	-27.9	38.3	-1.27	1.80
Total Private	1761.6	1785.3	1733.7	-23.7	27.9	-1.33	1.61
Goods Producing	395.4	399.4	386.4	-4.0	9.0	-1.00	2.33
Mining and Logging	9.0	9.1	9.4	-0.1	-0.4	-1.10	-4.26
Mining (except Oil and Gas)	4.5	4.5	4.5	0.0	0.0	0.00	0.00
Construction	102.1	104.1	98.2	-2.0	3.9	-1.92	3.97
Construction of Buildings	23.4	23.5	22.4	-0.1	1.0	-0.43	4.46
Heavy and Civil Engineering Construction	16.6	17.9	17.7	-1.3	-1.1	-7.26	-6.21
Specialty Trade Contractors	62.1	62.7	58.1	-0.6	4.0	-0.96	6.88
Manufacturing	284.3	286.2	278.8	-1.9	5.5	-0.66	1.97
Durable Goods Manufacturing	193.4	194.7	188.1	-1.3	5.3	-0.67	2.82
Wood Product Manufacturing	18.8	19.1	18.9	-0.3	-0.1	-1.57	-0.53
Primary Metal Manufacturing	18.1	18.3	17.9	-0.2	0.2	-1.09	1.12
Fabricated Metal Product Manufacturing	27.0	27.1	27.0	-0.1	0.0	-0.37	0.00
Machinery Manufacturing	10.8	10.9	10.7	-0.1	0.1	-0.92	0.93
Computer and Electronic Product Manufacturing	7.6	7.7	7.7	-0.1	-0.1	-1.30	-1.30
Elect.Equipment, Appliance & Component Manfng	6.8	6.8	6.9	0.0	-0.1	0.00	-1.45
Transportation Equipment Manufacturing	78.6	79.2	74.2	-0.6	4.4	-0.76	5.93
Motor Vehicle Manufacturing	22.3	22.4	21.6	-0.1	0.7	-0.45	3.24
Motor Vehicle Parts Manufacturing	30.0	30.1	27.1	-0.1	2.9	-0.33	10.70
Aerospace Products & Parts Manufacturing	14.7	14.8	14.3	-0.1	0.4	-0.68	2.80
Furniture and Related Product Manufacturing	9.0	9.1	9.3	-0.1	-0.3	-1.10	-3.23
Non-Durable Goods Manufacturing	90.9	91.5	90.7	-0.6	0.2	-0.66	0.22
Food Manufacturing	32.9	33.2	32.3	-0.3	0.6	-0.90	1.86
Animal Slaughtering and Processing	23.9	24.1	23.6	-0.2	0.3	-0.83	1.27
Textile Mills	3.9	4.0	4.4	-0.1	-0.5	-2.50	-11.36
Fiber, Yarn, and Thread Mills	1.5	1.5	1.8	0.0	-0.3	0.00	-16.67
Textile Product Mills	2.5	2.5	2.9	0.0	-0.4	0.00	-13.79
Textile Furnishings Mills	1.1	1.1	1.5	0.0	-0.4	0.00	-26.67
Paper Manufacturing	11.2	11.3	10.8	-0.1	0.4	-0.88	3.70
Pulp, Paper, and Paperboard Mills	6.5	6.5	6.0	0.0	0.5	0.00	8.33
Plastics and Rubber Products Manufacturing	18.4	18.4	18.0	0.0	0.4	0.00	2.22
Service Providing	1771.1	1795.0	1741.8	-23.9	29.3	-1.33	1.68
Private Service Providing	1366.2	1385.9	1347.3	-19.7	18.9	-1.42	1.40
Trade, Transportation, and Utilities	409.5	418.9	405.6	-9.4	3.9	-2.24	0.96
Wholesale Trade	77.2	78.0	77.3	-0.8	-0.1	-1.03	-0.13
Merchant Wholesalers, Durable Goods	38.2	38.4	38.4	-0.2	-0.2	-0.52	-0.52
Merchant Wholesalers, Nondurable Goods	22.7	22.9	22.6	-0.2	0.1	-0.87	0.44
Wholesale Trade Agents and Brokers	16.3	16.7	16.3	-0.4	0.0	-2.40	0.00

p = Preliminary r = Revised

1/ Data include, on a place of work basis, all full and part-time nonagricultural wage and salary employees who worked during or received pay for, any part of the pay period which included the 12th of the month. Proprietors, self-employed persons, workers in private households and unpaid family workers are excluded. Estimates adjusted to a 2023 benchmark, based on the North American Industry Classification System (NAICS), 2022. Totals may not add due to rounding.

EMPLOYEES IN NONAGRICULTURAL INDUSTRIES IN ALABAMA ^{1/}

(in thousands)

INDUSTRY				NET CHANGE FROM:		PERCENT CHANGE FROM:	
	Jan p 2024	Dec r 2023	Jan r 2023	Dec r 2023	Jan r 2023	Dec r 2023	Jan r 2023
Retail Trade	240.8	246.2	235.2	-5.4	5.6	-2.19	2.38
Motor Vehicle and Parts Dealers	33.8	34.1	32.9	-0.3	0.9	-0.88	2.74
Building Mat. & Garden Equip. and Supplies Dealers	23.7	24.0	23.0	-0.3	0.7	-1.25	3.04
Food and Beverage Retailers	36.7	37.3	35.7	-0.6	1.0	-1.61	2.80
General Merchandise Retailers	62.0	64.3	59.4	-2.3	2.6	-3.58	4.38
Department Stores	13.9	15.0	14.3	-1.1	-0.4	-7.33	-2.80
Warehouse Clubs, Supercenters, and Other General	48.1	49.3	45.1	-1.2	3.0	-2.43	6.65
Health and Personal Care Retailers	16.2	16.4	16.1	-0.2	0.1	-1.22	0.62
Trans, Warehousing, and Utilities	91.5	94.7	93.1	-3.2	-1.6	-3.38	-1.72
Utilities	13.1	13.0	12.9	0.1	0.2	0.77	1.55
Elect. Power Gen., Transmission & Distribution	10.8	10.8	10.7	0.0	0.1	0.00	0.93
Transportation and Warehousing	78.4	81.7	80.2	-3.3	-1.8	-4.04	-2.24
Truck Transportation	27.2	27.2	27.3	0.0	-0.1	0.00	-0.37
General Freight Trucking	17.4	17.3	17.8	0.1	-0.4	0.58	-2.25
Information	23.6	23.4	23.4	0.2	0.2	0.85	0.85
Telecommunications	7.6	7.5	7.7	0.1	-0.1	1.33	-1.30
Financial Activities	104.4	105.2	103.8	-0.8	0.6	-0.76	0.58
Finance and Insurance	76.8	76.8	76.3	0.0	0.5	0.00	0.66
Credit Intermediation and Related Activities	38.1	38.1	38.7	0.0	-0.6	0.00	-1.55
Depository Credit Intermediation	29.8	29.8	30.4	0.0	-0.6	0.00	-1.97
Insurance Carriers and Related Activities	33.6	33.6	32.6	0.0	1.0	0.00	3.07
Insurance Carriers	14.3	14.3	13.9	0.0	0.4	0.00	2.88
Real Estate and Rental and Leasing	27.6	28.4	27.5	-0.8	0.1	-2.82	0.36
Professional and Business Services	265.4	267.1	264.2	-1.7	1.2	-0.64	0.45
Professional, Scientific and Technical Services	126.2	126.3	122.9	-0.1	3.3	-0.08	2.69
Architectural, Engineering, and Related Services	32.9	33.2	31.3	-0.3	1.6	-0.90	5.11
Computer Systems Design and Related Services	27.3	26.8	26.5	0.5	0.8	1.87	3.02
Management of Companies and Enterprises	17.2	17.3	17.1	-0.1	0.1	-0.58	0.58
Admin, Support & Waste Mngmt & Remediation Svcs.	122.0	123.5	124.2	-1.5	-2.2	-1.21	-1.77
Private Education and Health Services	261.3	265.5	252.2	-4.2	9.1	-1.58	3.61
Private Educational Services	30.2	31.5	30.7	-1.3	-0.5	-4.13	-1.63
Health Care and Social Assistance	231.1	234.0	221.5	-2.9	9.6	-1.24	4.33
Ambulatory Health Care Services	108.5	110.3	105.0	-1.8	3.5	-1.63	3.33
Offices of Physicians	43.8	44.4	42.3	-0.6	1.5	-1.35	3.55
Hospitals	46.1	46.6	45.3	-0.5	0.8	-1.07	1.77
Nursing and Residential Care Facilities	43.4	43.2	39.8	0.2	3.6	0.46	9.05
Social Assistance	33.1	33.9	31.4	-0.8	1.7	-2.36	5.41
Leisure and Hospitality	198.0	201.3	196.6	-3.3	1.4	-1.64	0.71
Arts, Entertainment, and Recreation	21.1	22.3	19.7	-1.2	1.4	-5.38	7.11
Amusements, Gambling, and Recreation	16.7	17.7	16.2	-1.0	0.5	-5.65	3.09
Accommodation and Food Services	176.9	179.0	176.9	-2.1	0.0	-1.17	0.00
Food Services and Drinking Places	160.6	162.9	160.7	-2.3	-0.1	-1.41	-0.06
Restaurants and Other Eating Places	149.9	151.7	151.0	-1.8	-1.1	-1.19	-0.73
Full-Service Restaurants	62.0	62.4	61.7	-0.4	0.3	-0.64	0.49
Limited-Services Eating Places	87.9	89.3	89.3	-1.4	-1.4	-1.57	-1.57
Other Services	104.0	104.5	101.5	-0.5	2.5	-0.48	2.46
Government	404.9	409.1	394.5	-4.2	10.4	-1.03	2.64
Federal Government	57.5	58.1	55.8	-0.6	1.7	-1.03	3.05
State Government	122.5	124.9	119.6	-2.4	2.9	-1.92	2.42
State Government Educational Services	71.2	73.5	69.7	-2.3	1.5	-3.13	2.15
State Government Excluding Educational Services	51.3	51.4	49.9	-0.1	1.4	-0.19	2.81
Local Government	224.9	226.1	219.1	-1.2	5.8	-0.53	2.65
Local Government Educational Services	102.5	103.1	100.6	-0.6	1.9	-0.58	1.89
Local Government Excluding Educational Services	122.4	123.0	118.5	-0.6	3.9	-0.49	3.29

p = Preliminary r = Revised

^{1/} Data include, on a place of work basis, all full and part-time nonagricultural wage and salary employees who worked during or received pay for, any part of the pay period which included the 12th of the month. Proprietors, self-employed persons, workers in private households and unpaid family workers are excluded. Estimates adjusted to a 2023 benchmark, based on the North American Industry Classification System (NAICS), 2022. Totals may not add due to rounding.

NONAGRICULTURAL WAGE AND SALARY EMPLOYMENT IN ALABAMA 1/ (in thousands)

INDUSTRY	Not Seasonally Adjusted			Seasonally Adjusted ^{3/}		
	Jan p 2024	Dec r 2023	Jan r 2023	Jan p 2024	Dec r 2023	Jan r 2023
Total Nonfarm^{2/}	2166.5	2194.4	2128.2	2185.3	2181.0	2148.9
Total Private	1761.6	1785.3	1733.7	1779.1	1775.8	1752.5
Goods Producing	395.4	399.4	386.4	397.5	397.0	389.7
Mining and Logging	9.0	9.1	9.4	9.0	9.1	9.4
Construction	102.1	104.1	98.2	102.8	102.5	100.2
Manufacturing	284.3	286.2	278.8	285.7	285.4	280.1
Service Providing	1771.1	1795.0	1741.8	1787.8	1784.0	1759.2
Private Service Providing	1366.2	1385.9	1347.3	1381.6	1378.8	1362.8
Trade, Transportation, and Utilities	409.5	418.9	405.6	410.2	409.5	407.6
Wholesale Trade	77.2	78.0	77.3	77.5	77.8	77.7
Retail Trade	240.8	246.2	235.2	241.2	240.4	236.7
Transportation, Warehousing, and Utilities	91.5	94.7	93.1	91.5	91.3	93.2
Information	23.6	23.4	23.4	23.6	23.5	23.5
Financial Activities	104.4	105.2	103.8	105.0	104.9	104.5
Finance and Insurance	76.8	76.8	76.3	76.8	76.5	76.6
Real Estate and Rental and Leasing	27.6	28.4	27.5	28.2	28.4	27.9
Professional and Business Services	265.4	267.1	264.2	268.6	267.0	267.0
Professional, Scientific, and Tech Services	126.2	126.3	122.9	126.1	126.0	122.7
Management of Companies and Enterprises	17.2	17.3	17.1	17.2	17.2	17.2
Admin, Supp & Waste Manage & Remed Services	122.0	123.5	124.2	125.3	123.8	127.1
Private Education and Health Services	261.3	265.5	252.2	263.3	263.8	254.1
Private Educational Services	30.2	31.5	30.7	30.7	31.2	31.3
Health Care and Social Assistance	231.1	234.0	221.5	232.6	232.6	222.8
Leisure and Hospitality	198.0	201.3	196.6	206.4	205.5	203.9
Arts, Entertainment, and Recreation	21.1	22.3	19.7	23.1	22.9	22.1
Accommodation and Food Services	176.9	179.0	176.9	183.3	182.6	181.8
Other Services	104.0	104.5	101.5	104.5	104.6	102.2
Government	404.9	409.1	394.5	406.2	405.2	396.4
Federal Government	57.5	58.1	55.8	57.6	57.4	56.0
State Government	122.5	124.9	119.6	123.8	123.1	121.2
Local Government	224.9	226.1	219.1	224.8	224.7	219.2

METROPOLITAN STATISTICAL AREAS Total Nonfarm Employment	Not Seasonally Adjusted			Seasonally Adjusted		
	Jan p 2024	Dec r 2023	Jan r 2023	Jan p 2024	Dec r 2023	Jan r 2023
Anniston-Oxford-Jackson	47.1	47.5	46.9	47.4	47.2	47.3
Auburn-Opelika	74.3	75.1	71.1	75.2	74.5	72.0
Birmingham-Hoover	565.4	574.7	559.0	570.0	570.1	564.1
Daphne-Fairhope-Foley	87.0	88.7	84.4	89.3	89.4	86.8
Decatur	60.4	61.0	59.7	60.8	60.6	60.2
Dothan	63.0	64.1	62.1	63.5	63.6	62.6
Florence-Muscle Shoals	58.6	59.8	57.9	59.3	59.4	58.6
Gadsden	34.6	35.2	34.2	35.0	34.9	34.6
Huntsville	278.6	281.4	271.3	281.1	280.2	273.4
Mobile	188.3	191.0	186.7	190.1	189.7	188.3
Montgomery	182.4	184.7	179.4	184.2	183.6	180.8
Tuscaloosa	114.9	116.9	112.6	115.8	116.2	113.7

p= Preliminary r= Revised

1/ Nonagricultural wage and salary employment estimates prepared by the United States Department of Labor. Data estimated on place of work basis and seasonally adjusted by use of the Bureau of Labor Statistics X-12 Seasonal Adjustment method.

2/ Total Nonfarm employment may not equal sum of data in seasonally adjusted columns due to some series not being seasonally adjusted.

3/ A 3-month average of seasonally adjusted over-the-month change is available at www.bls.gov/sae/tables/state-news-release/hom

HOURS AND EARNINGS DATA FOR SELECTED NONAGRICULTURAL INDUSTRIES IN ALABAMA^{1/}

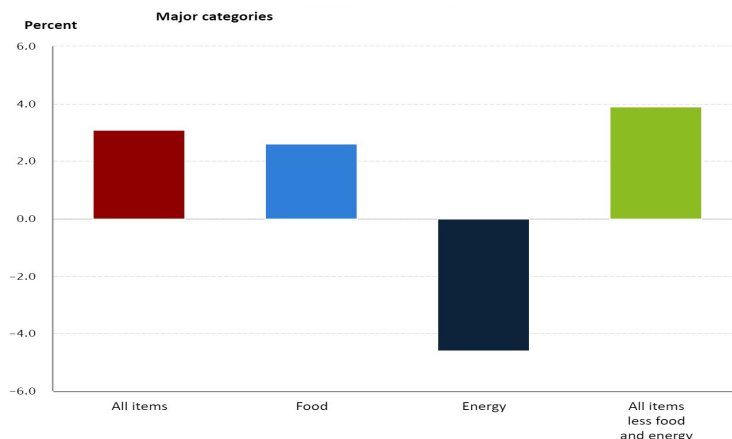
STATEWIDE INDUSTRY	All Employees (in thousands)			Average Weekly Earnings			Average Weekly Hours			Average Hourly Earnings		
	Jan p 2024	Dec r 2023	Jan r 2023	Jan p 2024	Dec r 2023	Jan r 2023	Jan p 2024	Dec r 2023	Jan r 2023	Jan p 2024	Dec r 2023	Jan r 2023
Total Private	1,761.6	1,785.3	1,733.7	\$1,005.61	\$1,044.12	\$1,013.42	33.7	34.7	34.4	\$29.84	\$30.09	\$29.46
Goods Producing	395.4	399.4	386.4	\$1,155.42	\$1,219.03	\$1,180.28	39.3	41.1	39.7	\$29.40	\$29.66	\$29.73
Construction	102.1	104.1	98.2	\$1,256.11	\$1,330.65	\$1,159.76	39.7	41.7	38.1	\$31.64	\$31.91	\$30.44
Manufacturing	284.3	286.2	278.8	\$1,147.87	\$1,189.00	\$1,170.90	39.5	41.0	40.6	\$29.06	\$29.00	\$28.84
Private Service Providing	1,366.2	1,385.9	1,347.3	\$963.00	\$992.20	\$966.27	32.1	32.8	32.9	\$30.00	\$30.25	\$29.37
Trade, Transportation, and Utilities	409.5	418.9	405.6	\$861.76	\$860.64	\$824.64	32.3	33.0	32.2	\$26.68	\$26.08	\$25.61
Financial Activities	104.4	105.2	103.8	\$1,327.85	\$1,349.82	\$1,303.78	36.3	35.7	38.1	\$36.58	\$37.81	\$34.22
Professional and Business Services	265.4	267.1	264.2	\$1,318.32	\$1,358.17	\$1,345.78	36.0	36.5	36.8	\$36.62	\$37.21	\$36.57
Private Education and Health Services	261.3	265.5	252.2	\$916.43	\$949.87	\$943.94	32.8	33.6	34.4	\$27.94	\$28.27	\$27.44
Leisure and Hospitality	198.0	201.3	196.6	\$383.12	\$401.50	\$398.98	23.9	25.0	25.3	\$16.03	\$16.06	\$15.77
Other Services	104.0	104.5	101.5	\$874.17	\$919.52	\$898.11	33.0	33.1	33.7	\$26.49	\$27.78	\$26.65
MANUFACTURING: PRODUCTION WORKERS	Production Workers (in thousands)			Average Weekly Earnings			Average Weekly Hours			Average Hourly Earnings		
	Jan p 2024	Dec r 2023	Jan r 2023	Jan p 2024	Dec r 2023	Jan r 2023	Jan p 2024	Dec r 2023	Jan r 2023	Jan p 2024	Dec r 2023	Jan r 2023
Manufacturing	198.5	200.1	202.7	\$958.23	\$996.63	\$999.44	40.5	41.7	41.8	\$23.66	\$23.90	\$23.91
Durable Goods	132.3	132.3	130.9	\$953.98	\$1,010.88	\$990.86	40.1	41.6	41.2	\$23.79	\$24.30	\$24.05
Non-Durable Goods	66.2	67.8	71.8	\$966.83	\$968.73	\$1,015.01	41.3	41.9	42.9	\$23.41	\$23.12	\$23.66
METROPOLITAN STATISTICAL AREAS	All Employees (in thousands)			Average Weekly Earnings			Average Weekly Hours			Average Hourly Earnings		
	Jan p 2024	Dec r 2023	Jan r 2023	Jan p 2024	Dec r 2023	Jan r 2023	Jan p 2024	Dec r 2023	Jan r 2023	Jan p 2024	Dec r 2023	Jan r 2023
Anniston-Oxford-Jackson	47.1	47.5	46.9	\$854.90	\$864.20	\$785.38	33.2	33.2	32.4	\$25.75	\$26.03	\$24.24
Auburn-Opelika	74.3	75.1	71.1	\$777.00	\$794.74	\$831.45	29.6	29.9	34.4	\$26.25	\$26.58	\$24.17
Birmingham-Hoover	565.4	574.7	559.0	\$1,059.27	\$1,102.01	\$1,096.20	33.5	34.6	34.8	\$31.62	\$31.85	\$31.50
Daphne-Fairhope-Foley	87.0	88.7	84.4	\$797.80	\$854.59	\$811.74	30.3	32.2	30.9	\$26.33	\$26.54	\$26.27
Decatur	60.4	61.0	59.7	\$847.89	\$840.98	\$883.23	33.5	34.2	34.3	\$25.31	\$24.59	\$25.75
Dothan	63.0	64.1	62.1	\$743.03	\$731.11	\$705.34	33.5	32.8	33.7	\$22.18	\$22.29	\$20.93
Florence-Muscle Shoals	58.6	59.8	57.9	\$860.55	\$885.97	\$830.62	33.8	34.3	34.9	\$25.46	\$25.83	\$23.80
Gadsden	34.6	35.2	34.2	\$787.57	\$845.97	\$772.80	33.4	34.6	35.0	\$23.58	\$24.45	\$22.08
Huntsville	278.6	281.4	271.3	\$1,357.70	\$1,419.29	\$1,312.38	33.9	35.5	34.6	\$40.05	\$39.98	\$37.93
Mobile	188.3	191.0	186.7	\$994.16	\$1,028.16	\$979.25	34.7	36.0	35.7	\$28.65	\$28.56	\$27.43
Montgomery	182.4	184.7	179.4	\$967.44	\$984.24	\$950.48	34.7	36.0	34.5	\$27.88	\$27.34	\$27.55
Tuscaloosa	114.9	116.9	112.6	\$831.35	\$872.93	\$850.86	32.5	33.9	34.9	\$25.58	\$25.75	\$24.38

p = Preliminary r = Revised

^{1/} Estimates, computed on a gross basis, do not represent straight time earnings or standard workweek.

Consumer Price Index

12-month percentage change, Consumer Price Index, selected categories, January 2024, not seasonally adjusted

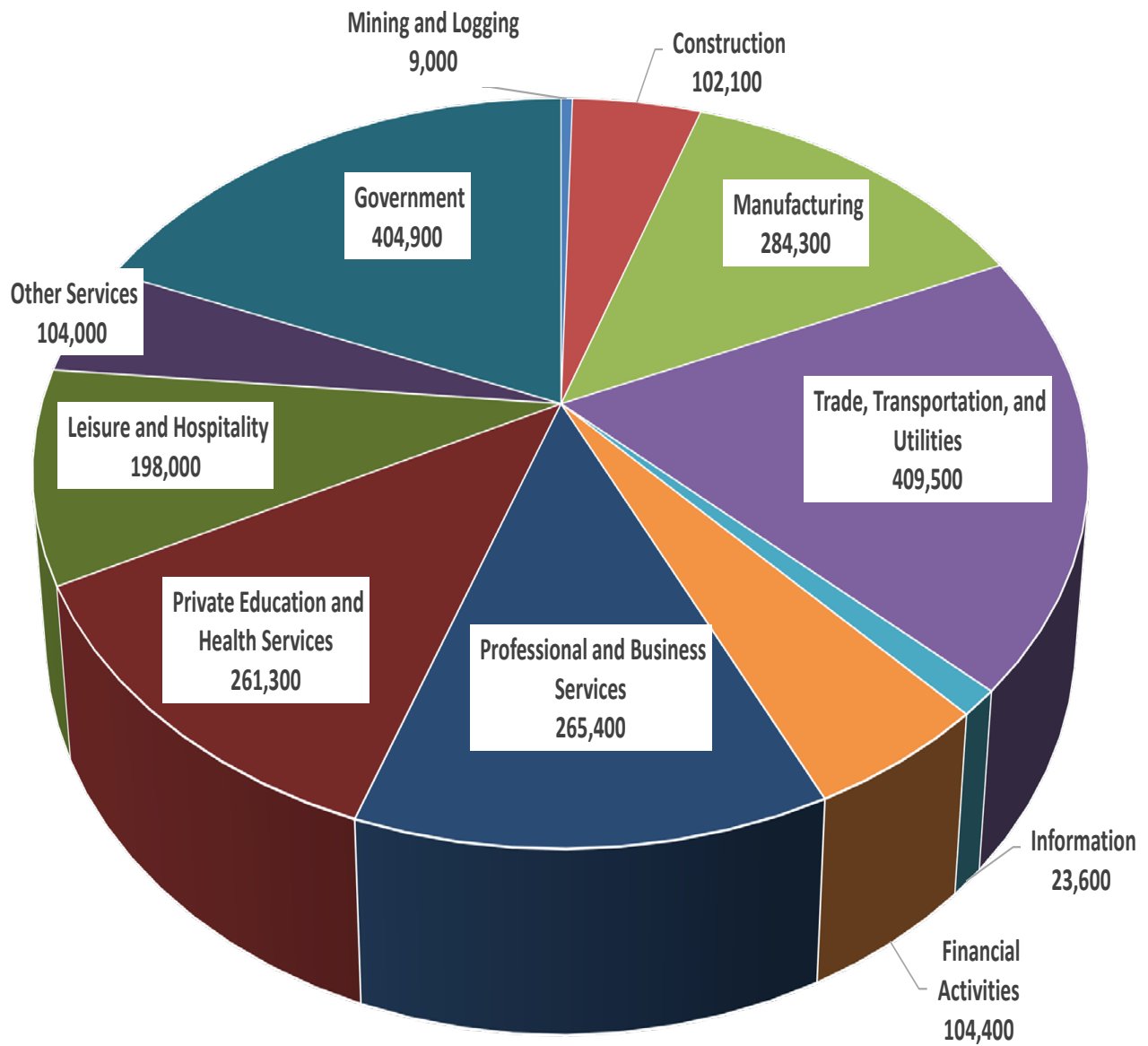


The Consumer Price Index for All Urban Consumers (CPI-U) increased 3.1 percent over the last 12 months to an index level of 308.417 (1982-84=100). For January, the index increased 0.5 percent prior to seasonal adjustment.

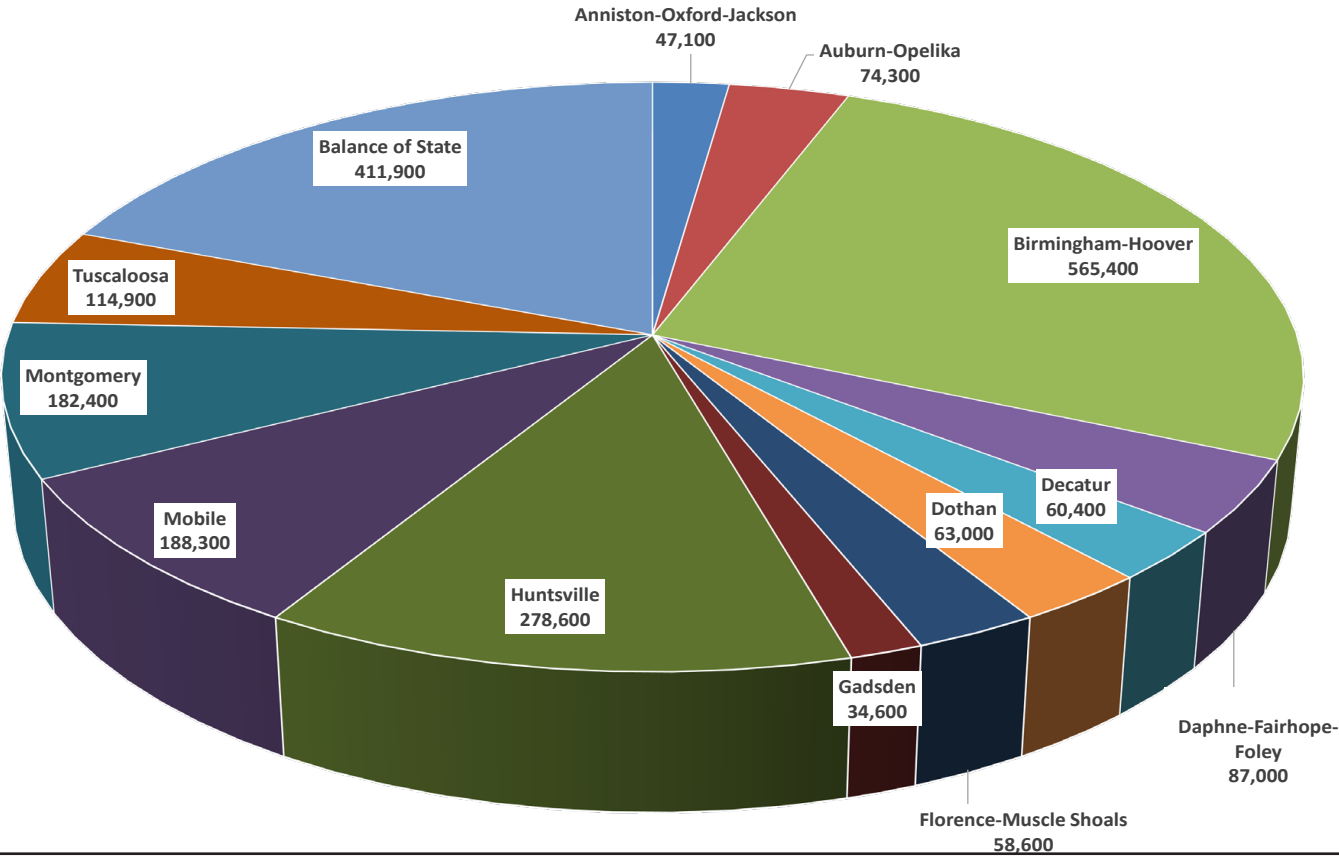
The Consumer Price Index for Urban Wage Earners and Clerical Workers (CPI-W) increased 2.9 percent over the last 12 months to an index level of 302.201 (1982-84=100). For January, the index increased 0.5 percent prior to seasonal adjustment.

For further details visit the CPI homepage online at <http://www.bls.gov/cpi/> or contact the CPI Information Office at (202) 691-7000.

Alabama January 2024 Preliminary
Current Employment Statistics
Statewide Employment by Industry Sector



Alabama January 2024 Preliminary Current Employment Statistics Statewide Employment by Geography



Estimates prepared by the U.S. Department of Labor, Bureau of Labor Statistics and adjusted to a 2023 benchmark, based on the North American Industry Classification System (NAICS), 2022.

**NONAGRICULTURAL WAGE AND SALARY EMPLOYMENT
FOR ALABAMA METROPOLITAN STATISTICAL AREAS (MSA'S)^{1/}**

<u>ANNISTON-OXFORD-JACKSONVILLE MSA</u>	Jan p 2024	Dec r 2023	Jan r 2023	Net Change From :	
				Dec r 2023	Jan r 2023
TOTAL NONAGRICULTURAL EMPLOYMENT	47,100	47,500	46,900	-400	200
GOODS PRODUCING	8,100	8,100	8,100	0	0
Mining, Logging, and Construction	1,300	1,300	1,200	0	100
Manufacturing	6,800	6,800	6,900	0	-100
SERVICE PROVIDING	39,000	39,400	38,800	-400	200
Trade, Transportation, and Utilities	9,400	9,600	9,200	-200	200
Wholesale Trade	1,800	1,800	1,800	0	0
Retail Trade	6,100	6,200	6,000	-100	100
Transportation, Warehousing and Utilities	1,500	1,600	1,400	-100	100
Information	300	300	300	0	0
Financial Activities	1,400	1,400	1,400	0	0
Professional and Business Services	3,800	3,800	4,100	0	-300
Private Education and Health Services	4,700	4,700	4,600	0	100
Leisure and Hospitality	4,800	4,900	4,900	-100	-100
Other Services	2,000	2,000	1,900	0	100
Government	12,600	12,700	12,400	-100	200
Federal	3,500	3,500	3,500	0	0
State and Local	9,100	9,200	8,900	-100	200

¹ Place of work basis. p Preliminary. r Revised.

NOTE: Estimates prepared by the U.S. Department of Labor, Bureau of Labor Statistics.

Estimates adjusted to a 2023 benchmark. Based on the North American Industry Classification System (NAICS), 2022.

<u>AUBURN-OPELIKA MSA</u>	Jan p 2024	Dec r 2023	Jan r 2023	Net Change From :	
				Dec r 2023	Jan r 2023
TOTAL NONAGRICULTURAL EMPLOYMENT	74,300	75,100	71,100	-800	3,200
GOODS PRODUCING	10,300	10,300	10,000	0	300
Mining, Logging, and Construction	3,300	3,300	3,200	0	100
Manufacturing	7,000	7,000	6,800	0	200
SERVICE PROVIDING	64,000	64,800	61,100	-800	2,900
Trade, Transportation, and Utilities	14,500	14,800	13,800	-300	700
Wholesale Trade	2,300	2,300	2,300	0	0
Retail Trade	8,300	8,500	7,700	-200	600
Transportation, Warehousing and Utilities	3,900	4,000	3,800	-100	100
Information	900	900	900	0	0
Financial Activities	2,300	2,300	2,300	0	0
Professional and Business Services	8,000	8,100	7,400	-100	600
Private Education and Health Services	5,800	5,900	5,400	-100	400
Leisure and Hospitality	9,400	9,600	9,100	-200	300
Other Services	2,700	2,700	2,600	0	100
Government	20,400	20,500	19,600	-100	800
Federal	400	400	300	0	100
State and Local	20,000	20,100	19,300	-100	700

¹ Place of work basis. p Preliminary. r Revised.

NOTE: Estimates prepared by the U.S. Department of Labor, Bureau of Labor Statistics.

Estimates adjusted to a 2023 benchmark. Based on the North American Industry Classification System (NAICS), 2022.

**NONAGRICULTURAL WAGE AND SALARY EMPLOYMENT
FOR ALABAMA METROPOLITAN STATISTICAL AREAS (MSA'S)^{1/}**

<u>BIRMINGHAM - HOOVER MSA</u>	Jan p 2024	Dec r 2023	Jan r 2023	Net Change From :	
				Dec r 2023	Jan r 2023
TOTAL NONAGRICULTURAL EMPLOYMENT	565,400	574,700	559,000	-9,300	6,400
GOODS PRODUCING	72,800	74,400	71,800	-1,600	1,000
Mining and Logging	2,400	2,400	2,600	0	-200
Construction	29,800	30,700	29,600	-900	200
Specialty Trade Contractors	17,600	18,300	17,400	-700	200
Manufacturing	40,600	41,300	39,600	-700	1,000
Durable Goods	28,600	29,200	27,900	-600	700
Primary Metal Manufacturing	5,200	5,300	5,400	-100	-200
Nondurable Goods	12,000	12,100	11,700	-100	300
Food Manufacturing	4,000	4,100	3,900	-100	100
SERVICE PROVIDING	492,600	500,300	487,200	-7,700	5,400
Trade, Transportation, and Utilities	114,900	118,400	114,300	-3,500	600
Wholesale Trade	27,800	28,200	28,000	-400	-200
Merchant Wholesalers	13,800	13,900	13,600	-100	200
Retail Trade	58,300	59,900	56,900	-1,600	1,400
General Merchandise Retailers	14,500	15,100	13,700	-600	800
Transportation, Warehousing and Utilities	28,800	30,300	29,400	-1,500	-600
Utilities	6,400	6,400	6,300	0	100
Transportation and Warehousing	22,400	23,900	23,100	-1,500	-700
Information	9,600	9,500	9,400	100	200
Telecommunication	3,200	3,200	3,200	0	0
Financial Activities	43,800	44,100	44,000	-300	-200
Finance and Insurance	35,200	35,400	35,700	-200	-500
Credit Intermediation and Related	14,000	14,100	15,000	-100	-1,000
Insurance Carriers and Related	18,600	18,700	18,200	-100	400
Professional and Business Services	76,100	76,400	77,000	-300	-900
Professional, Scientific and Technical Services	32,800	32,600	31,900	200	900
Management of Companies and Enterprises	9,100	9,100	9,100	0	0
Admin., Support and Waste Management	34,200	34,700	36,000	-500	-1,800
Private Education and Health Services	77,900	79,200	74,900	-1,300	3,000
Health Care and Social Assistance	70,100	70,800	67,000	-700	3,100
Ambulatory Healthcare	34,500	34,800	33,400	-300	1,100
Hospitals	16,700	17,100	16,500	-400	200
Leisure and Hospitality	48,200	49,700	48,500	-1,500	-300
Food Service and Drinking Places	38,400	39,400	39,200	-1,000	-800
Other Services	32,600	32,700	32,100	-100	500
Government	89,500	90,300	87,000	-800	2,500
Federal	9,900	10,000	9,600	-100	300
State	35,100	35,300	33,600	-200	1,500
Local	44,500	45,000	43,800	-500	700

¹ Place of work basis. p Preliminary. r Revised.

NOTE: Estimates prepared by the U.S. Department of Labor, Bureau of Labor Statistics.

Estimates adjusted to a 2023 benchmark. Based on the North American Industry Classification System (NAICS), 2022.

<u>DAPHNE-FAIRHOPE-FOLEY MSA</u>	Jan p 2024	Dec r 2023	Jan r 2023	Net Change From :	
				Dec r 2023	Jan r 2023
TOTAL NONAGRICULTURAL EMPLOYMENT	87,000	88,700	84,400	-1,700	2,600
GOODS PRODUCING	9,800	9,700	9,600	100	200
SERVICE PROVIDING	77,200	79,000	74,800	-1,800	2,400
Government	11,200	11,300	10,800	-100	400

¹ Place of work basis. p Preliminary. r Revised.

NOTE: Estimates prepared by the U.S. Department of Labor, Bureau of Labor Statistics.

Estimates adjusted to a 2023 benchmark. Based on the North American Industry Classification System (NAICS), 2022.

**NONAGRICULTURAL WAGE AND SALARY EMPLOYMENT
FOR ALABAMA METROPOLITAN STATISTICAL AREAS (MSA'S)^{1/}**

<u>DECATUR MSA</u>	Jan p 2024	Dec r 2023	Jan r 2023	Net Change From :	
				Dec r 2023	Jan r 2023
TOTAL NONAGRICULTURAL EMPLOYMENT	60,400	61,000	59,700	-600	700
GOODS PRODUCING	18,400	18,500	18,600	-100	-200
Mining, Logging, and Construction	4,400	4,500	4,400	-100	0
Manufacturing	14,000	14,000	14,200	0	-200
Durable Goods	7,700	7,700	7,800	0	-100
Nondurable Goods	6,300	6,300	6,400	0	-100
SERVICE PROVIDING	42,000	42,500	41,100	-500	900
Trade, Transportation, and Utilities	10,900	11,100	10,700	-200	200
Wholesale Trade	2,400	2,400	2,400	0	0
Retail Trade	6,500	6,600	6,300	-100	200
Transportation, Warehousing and Utilities	2,000	2,100	2,000	-100	0
Information	400	400	400	0	0
Financial Activities	2,400	2,400	2,200	0	200
Professional and Business Services	6,500	6,600	6,400	-100	100
Private Education and Health Services	5,000	5,100	4,900	-100	100
Leisure and Hospitality	5,000	5,100	5,000	-100	0
Other Services	2,700	2,700	2,600	0	100
Government	9,100	9,100	8,900	0	200
Federal	400	400	400	0	0
State and Local	8,700	8,700	8,500	0	200

1 Place of work basis. p Preliminary. r Revised.

NOTE: Estimates prepared by the U.S. Department of Labor, Bureau of Labor Statistics.

Estimates adjusted to a 2023 benchmark. Based on the North American Industry Classification System (NAICS), 2022.

<u>DOTHAN MSA</u>	Jan p 2024	Dec r 2023	Jan r 2023	Net Change From :	
				Dec r 2023	Jan r 2023
TOTAL NONAGRICULTURAL EMPLOYMENT	63,000	64,100	62,100	-1,100	900
GOODS PRODUCING	8,200	8,300	8,000	-100	200
Mining, Logging, and Construction	2,800	2,800	2,700	0	100
Manufacturing	5,400	5,500	5,300	-100	100
SERVICE PROVIDING	54,800	55,800	54,100	-1,000	700
Trade, Transportation, and Utilities	16,500	17,100	16,100	-600	400
Wholesale Trade	3,200	3,300	3,300	-100	-100
Retail Trade	9,800	10,100	9,200	-300	600
Transportation, Warehousing and Utilities	3,500	3,700	3,600	-200	-100
Information	400	400	500	0	-100
Financial Activities	2,200	2,300	2,200	-100	0
Professional and Business Services	5,800	5,800	6,000	0	-200
Private Education and Health Services	9,800	9,900	9,400	-100	400
Leisure and Hospitality	6,200	6,300	6,500	-100	-300
Other Services	3,000	3,000	3,000	0	0
Government	10,900	11,000	10,400	-100	500
Federal	400	400	400	0	0
State and Local	10,500	10,600	10,000	-100	500

1 Place of work basis. p Preliminary. r Revised.

NOTE: Estimates prepared by the U.S. Department of Labor, Bureau of Labor Statistics.

Estimates adjusted to a 2023 benchmark. Based on the North American Industry Classification System (NAICS), 2022.

**NONAGRICULTURAL WAGE AND SALARY EMPLOYMENT
FOR ALABAMA METROPOLITAN STATISTICAL AREAS (MSA'S)^{1/}**

<u>FLORENCE - MUSCLE SHOALS MSA</u>	Jan p 2024	Dec r 2023	Jan r 2023	Net Change From :	
				Dec r 2023	Jan r 2023
TOTAL NONAGRICULTURAL EMPLOYMENT	58,600	59,800	57,900	-1,200	700
GOODS PRODUCING	12,600	12,900	12,600	-300	0
Mining, Logging, and Construction	4,000	4,100	3,900	-100	100
Manufacturing	8,600	8,800	8,700	-200	-100
SERVICE PROVIDING	46,000	46,900	45,300	-900	700
Trade, Transportation, and Utilities	11,800	12,100	11,600	-300	200
Wholesale Trade	2,200	2,300	2,300	-100	-100
Retail Trade	8,400	8,500	8,100	-100	300
Transportation, Warehousing and Utilities	1,200	1,300	1,200	-100	0
Information	500	500	500	0	0
Financial Activities	2,500	2,500	2,500	0	0
Professional and Business Services	3,700	3,700	3,800	0	-100
Private Education and Health Services	8,100	8,200	7,800	-100	300
Leisure and Hospitality	6,500	6,700	6,200	-200	300
Other Services	2,500	2,500	2,500	0	0
Government	10,400	10,700	10,400	-300	0
Federal	1,000	1,000	1,000	0	0
State and Local	9,400	9,700	9,400	-300	0

¹ Place of work basis. p Preliminary. r Revised.

NOTE: Estimates prepared by the U.S. Department of Labor, Bureau of Labor Statistics.

Estimates adjusted to a 2023 benchmark. Based on the North American Industry Classification System (NAICS), 2022.

<u>GADSDEN MSA</u>	Jan p 2024	Dec r 2023	Jan r 2023	Net Change From :	
				Dec r 2023	Jan r 2023
TOTAL NONAGRICULTURAL EMPLOYMENT	34,600	35,200	34,200	-600	400
GOODS PRODUCING	5,600	5,700	5,400	-100	200
Mining, Logging, and Construction	1,100	1,100	1,000	0	100
Manufacturing	4,500	4,600	4,400	-100	100
SERVICE PROVIDING	29,000	29,500	28,800	-500	200
Trade, Transportation, and Utilities	7,000	7,100	6,900	-100	100
Wholesale Trade	1,100	1,100	1,100	0	0
Retail Trade	4,800	4,900	4,700	-100	100
Transportation, Warehousing and Utilities	1,100	1,100	1,100	0	0
Information	200	200	200	0	0
Financial Activities	1,300	1,300	1,300	0	0
Professional and Business Services	2,700	2,800	2,700	-100	0
Private Education and Health Services	7,300	7,300	7,100	0	200
Leisure and Hospitality	3,600	3,800	3,900	-200	-300
Other Services	1,700	1,700	1,600	0	100
Government	5,200	5,300	5,100	-100	100
Federal	300	300	300	0	0
State and Local	4,900	5,000	4,800	-100	100

¹ Place of work basis. p Preliminary. r Revised.

NOTE: Estimates prepared by the U.S. Department of Labor, Bureau of Labor Statistics.

Estimates adjusted to a 2023 benchmark. Based on the North American Industry Classification System (NAICS), 2022.

**NONAGRICULTURAL WAGE AND SALARY EMPLOYMENT
FOR ALABAMA METROPOLITAN STATISTICAL AREAS (MSA'S)^{1/}**

<u>HUNTSVILLE MSA</u>	Jan p 2024	Dec r 2023	Jan r 2023	Net Change From :	
				Dec r 2023	Jan r 2023
TOTAL NONAGRICULTURAL EMPLOYMENT	278,600	281,400	271,300	-2,800	7,300
GOODS PRODUCING	45,800	46,200	44,100	-400	1,700
Mining, Logging, and Construction	10,200	10,600	10,100	-400	100
Manufacturing	35,600	35,600	34,000	0	1,600
Durable Goods	31,300	31,400	29,600	-100	1,700
Computer and Electronic Prod. Manufacturing	3,900	3,900	4,100	0	-200
Transportation Equipment Manufacturing	19,200	19,300	17,600	-100	1,600
Nondurable Goods	4,300	4,200	4,400	100	-100
SERVICE PROVIDING	232,800	235,200	227,200	-2,400	5,600
Trade, Transportation, and Utilities	39,500	40,700	40,600	-1,200	-1,100
Wholesale Trade	6,500	6,600	6,500	-100	0
Retail Trade	27,000	27,700	27,100	-700	-100
General Merchandise Retailers	7,500	7,800	7,800	-300	-300
Transportation, Warehousing and Utilities	6,000	6,400	7,000	-400	-1,000
Information	2,700	2,700	2,600	0	100
Financial Activities	8,900	9,000	8,500	-100	400
Professional and Business Services	68,600	68,900	66,300	-300	2,300
Professional, Scientific and Technical Services	50,900	51,100	49,200	-200	1,700
Private Education and Health Services	24,100	24,400	23,500	-300	600
Leisure and Hospitality	22,700	22,800	22,000	-100	700
Food Services and Drinking Places	18,100	18,300	17,800	-200	300
Other Services	9,300	9,300	9,000	0	300
Government	57,000	57,400	54,700	-400	2,300
Federal	21,100	21,300	20,500	-200	600
State	6,700	7,000	6,600	-300	100
Local	29,200	29,100	27,600	100	1,600

¹ Place of work basis. p Preliminary. r Revised.

NOTE: Estimates prepared by the U.S. Department of Labor, Bureau of Labor Statistics.

Estimates adjusted to a 2023 benchmark. Based on the North American Industry Classification System (NAICS), 2022.

<u>MOBILE MSA</u>	Jan p 2024	Dec r 2023	Jan r 2023	Net Change From :	
				Dec r 2023	Jan r 2023
TOTAL NONAGRICULTURAL EMPLOYMENT	188,300	191,000	186,700	-2,700	1,600
GOODS PRODUCING	29,100	29,500	28,100	-400	1,000
Mining, Logging, and Construction	12,900	13,100	12,100	-200	800
Manufacturing	16,200	16,400	16,000	-200	200
SERVICE PROVIDING	159,200	161,500	158,600	-2,300	600
Trade, Transportation, and Utilities	39,700	40,900	39,500	-1,200	200
Wholesale Trade	8,400	8,400	8,300	0	100
Retail Trade	19,700	20,200	19,700	-500	0
General Merchandise Retailers	5,100	5,300	4,900	-200	200
Transportation, Warehousing and Utilities	11,600	12,300	11,500	-700	100
Information	2,300	2,300	2,300	0	0
Financial Activities	8,300	8,500	9,500	-200	-1,200
Professional and Business Services	23,600	23,800	23,300	-200	300
Private Education and Health Services	30,800	31,100	29,400	-300	1,400
Health Care and Social Assistance	27,100	27,300	25,800	-200	1,300
Leisure and Hospitality	16,600	16,800	17,300	-200	-700
Food Services and Drinking Places	13,500	13,700	14,300	-200	-800
Other Services	12,200	12,300	12,100	-100	100
Government	25,700	25,800	25,200	-100	500
Federal	2,900	2,900	2,800	0	100
State	7,900	8,000	7,800	-100	100
Local	14,900	14,900	14,600	0	300

¹ Place of work basis. p Preliminary. r Revised.

NOTE: Estimates prepared by the U.S. Department of Labor, Bureau of Labor Statistics.

Estimates adjusted to a 2023 benchmark. Based on the North American Industry Classification System (NAICS), 2022.

**NONAGRICULTURAL WAGE AND SALARY EMPLOYMENT
FOR ALABAMA METROPOLITAN STATISTICAL AREAS (MSA'S)1/**

<u>MONTGOMERY MSA</u>	Jan p 2024	Dec r 2023	Jan r 2023	Net Change From :	
				Dec r 2023	Jan r 2023
TOTAL NONAGRICULTURAL EMPLOYMENT	182,400	184,700	179,400	-2,300	3,000
GOODS PRODUCING	27,300	27,500	26,100	-200	1,200
Mining, Logging, and Construction	7,600	7,700	7,100	-100	500
Manufacturing	19,700	19,800	19,000	-100	700
SERVICE PROVIDING	155,100	157,200	153,300	-2,100	1,800
Trade, Transportation, and Utilities	30,400	31,400	30,500	-1,000	-100
Wholesale Trade	6,100	6,200	6,100	-100	0
Retail Trade	17,800	18,300	17,700	-500	100
General Merchandise Retailers	5,000	5,200	4,600	-200	400
Transportation, Warehousing and Utilities	6,500	6,900	6,700	-400	-200
Information	1,900	1,900	2,000	0	-100
Financial Activities	9,100	9,100	8,800	0	300
Finance and Insurance	6,600	6,600	6,500	0	100
Professional and Business Services	21,100	21,300	21,400	-200	-300
Private Education and Health Services	20,900	21,100	20,400	-200	500
Health Care and Social Assistance	16,200	16,300	15,800	-100	400
Leisure and Hospitality	16,400	16,500	16,300	-100	100
Food Services and Drinking Places	12,600	12,700	12,700	-100	-100
Other Services	10,100	10,100	9,900	0	200
Government	45,200	45,800	44,000	-600	1,200
Federal	7,800	7,900	7,300	-100	500
State	23,800	24,100	23,400	-300	400
Local	13,600	13,800	13,300	-200	300

1 Place of work basis. p Preliminary. r Revised.

NOTE: Estimates prepared by the U.S. Department of Labor, Bureau of Labor Statistics.

Estimates adjusted to a 2023 benchmark. Based on the North American Industry Classification System (NAICS), 2022.

<u>TUSCALOOSA MSA</u>	Jan p 2024	Dec r 2023	Jan r 2023	Net Change From :	
				Dec r 2023	Jan r 2023
TOTAL NONAGRICULTURAL EMPLOYMENT	114,900	116,900	112,600	-2,000	2,300
GOODS PRODUCING	26,300	26,700	25,700	-400	600
Mining, Logging, and Construction	6,800	7,000	6,300	-200	500
Manufacturing	19,500	19,700	19,400	-200	100
SERVICE PROVIDING	88,600	90,200	86,900	-1,600	1,700
Trade, Transportation, and Utilities	17,400	18,100	17,200	-700	200
Wholesale Trade	2,300	2,300	2,200	0	100
Retail Trade	11,300	11,900	11,300	-600	0
Transportation, Warehousing and Utilities	3,800	3,900	3,700	-100	100
Information	1,000	900	900	100	100
Financial Activities	4,000	4,100	4,000	-100	0
Professional and Business Services	10,900	11,000	10,600	-100	300
Private Education and Health Services	10,000	10,100	9,700	-100	300
Leisure and Hospitality	11,300	11,600	11,400	-300	-100
Other Services	4,900	4,900	4,600	0	300
Government	29,100	29,500	28,500	-400	600
Federal	2,200	2,200	2,100	0	100
State and Local	26,900	27,300	26,400	-400	500

1 Place of work basis. p Preliminary. r Revised.

NOTE: Estimates prepared by the U.S. Department of Labor, Bureau of Labor Statistics.

Estimates adjusted to a 2023 benchmark. Based on the North American Industry Classification System (NAICS), 2022.

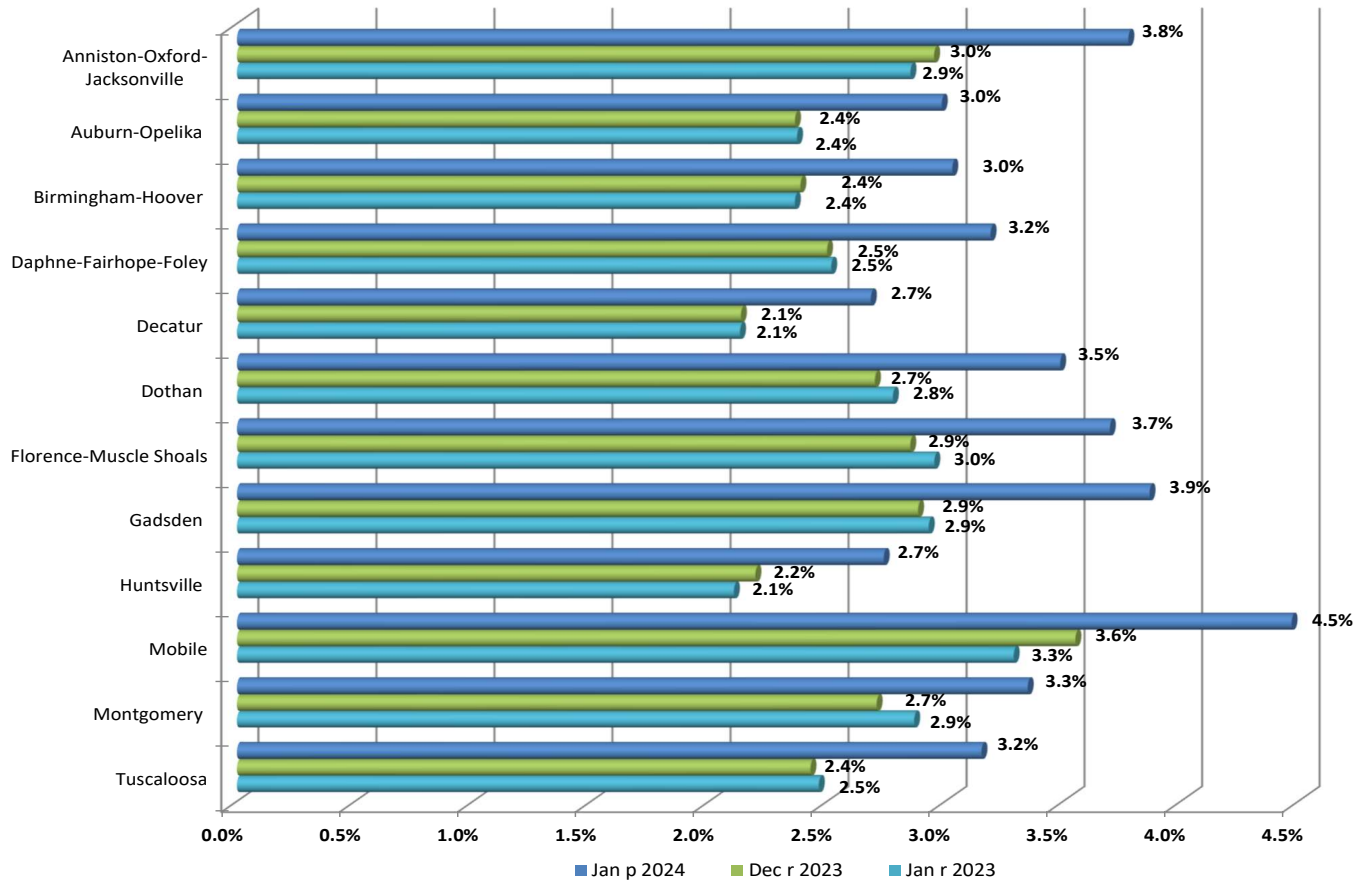
ALABAMA, U.S., & COUNTY AREA CIVILIAN LABOR FORCE DATA

Area	Civilian Labor Force			Employment			Unemployment			Unemployment Rate		
	Jan p	Dec r	Jan r	Jan p	Dec r	Jan r	Jan p	Dec r	Jan r	Jan p	Dec r	Jan r
	2024	2023	2023	2024	2023	2023	2024	2023	2023	2024	2023	2023
Alabama (Seasonally Adjusted)	2,327,861	2,325,305	2,284,000	2,261,270	2,261,204	2,230,113	66,591	64,101	53,887	2.9%	2.8%	2.4%
Alabama (Not Seasonally Adjusted)	2,312,952	2,324,381	2,270,889	2,235,236	2,262,732	2,210,999	77,716	61,649	59,890	3.4%	2.7%	2.6%
Autauga	26,983	27,111	26,537	26,244	26,505	25,917	739	606	620	2.7%	2.2%	2.3%
Baldwin	103,652	104,572	100,742	100,343	101,958	98,206	3,309	2,614	2,536	3.2%	2.5%	2.5%
Barbour	7,836	7,930	8,005	7,410	7,568	7,629	426	362	376	5.4%	4.6%	4.7%
Bibb	8,777	8,839	8,649	8,501	8,621	8,429	276	218	220	3.1%	2.5%	2.5%
Blount	25,927	26,147	25,481	25,143	25,550	24,927	784	597	554	3.0%	2.3%	2.2%
Bullock	4,602	4,711	4,458	4,465	4,602	4,322	137	109	136	3.0%	2.3%	3.1%
Butler	8,975	8,968	8,870	8,624	8,713	8,588	351	255	282	3.9%	2.8%	3.2%
Calhoun	45,506	45,544	45,109	43,787	44,199	43,822	1,719	1,345	1,287	3.8%	3.0%	2.9%
Chambers	16,572	16,570	15,881	15,975	16,136	15,471	597	434	410	3.6%	2.6%	2.6%
Cherokee	11,959	11,969	11,723	11,560	11,664	11,437	399	305	286	3.3%	2.5%	2.4%
Chilton	20,332	20,564	20,040	19,764	20,108	19,583	568	456	457	2.8%	2.2%	2.3%
Choclaw	4,325	4,407	4,250	4,103	4,226	4,060	222	181	190	5.1%	4.1%	4.5%
Clarke	7,686	7,655	7,650	7,137	7,247	7,197	549	408	453	7.1%	5.3%	5.9%
Clay	5,972	6,000	5,941	5,793	5,860	5,793	179	140	148	3.0%	2.3%	2.5%
Cleburne	6,304	6,379	6,099	6,117	6,226	5,944	187	153	155	3.0%	2.4%	2.5%
Coffee	21,798	21,964	21,614	21,086	21,360	21,035	712	604	579	3.3%	2.7%	2.7%
Colbert	24,043	24,273	23,643	23,058	23,490	22,855	985	783	788	4.1%	3.2%	3.3%
Conecuh	4,243	4,311	4,199	4,056	4,150	4,048	187	161	151	4.4%	3.7%	3.6%
Coosa	4,505	4,558	4,470	4,334	4,429	4,349	171	129	121	3.8%	2.8%	2.7%
Covington	14,815	14,971	14,952	14,234	14,522	14,530	581	449	422	3.9%	3.0%	2.8%
Crenshaw	6,222	6,354	5,915	6,005	6,167	5,729	217	187	186	3.5%	2.9%	3.1%
Cullman	39,645	39,991	39,384	38,569	39,150	38,573	1,076	841	811	2.7%	2.1%	2.1%
Dale	21,270	21,319	20,948	20,512	20,717	20,395	758	602	553	3.6%	2.8%	2.6%
Dallas	13,531	13,629	13,276	12,607	12,844	12,552	924	785	724	6.8%	5.8%	5.5%
DeKalb	31,206	31,535	30,547	30,272	30,816	29,803	934	719	744	3.0%	2.3%	2.4%
Elmore	38,605	38,677	37,909	37,505	37,829	37,049	1,100	848	860	2.8%	2.2%	2.3%
Escambia	14,534	14,521	14,178	13,902	14,033	13,672	632	488	506	4.3%	3.4%	3.6%
Etowah	39,380	39,509	38,797	37,857	38,369	37,660	1,523	1,140	1,137	3.9%	2.9%	2.9%
Fayette	6,502	6,539	6,551	6,224	6,301	6,358	278	238	193	4.3%	3.6%	2.9%
Franklin	14,093	14,226	13,948	13,665	13,884	13,563	428	342	385	3.0%	2.4%	2.8%
Geneva	11,304	11,509	11,051	10,945	11,210	10,777	359	299	274	3.2%	2.6%	2.5%
Greene	2,932	2,929	2,773	2,718	2,750	2,647	214	179	126	7.3%	6.1%	4.5%
Hale	6,067	6,203	5,927	5,805	5,987	5,702	262	216	225	4.3%	3.5%	3.8%
Henry	7,088	7,169	6,947	6,844	6,964	6,749	244	205	198	3.4%	2.9%	2.9%
Houston	48,561	48,777	47,538	46,829	47,458	46,189	1,732	1,319	1,349	3.6%	2.7%	2.8%
Jackson	23,551	23,774	23,145	22,761	23,124	22,520	790	650	625	3.4%	2.7%	2.7%
Jefferson	325,489	327,139	320,659	314,964	318,740	312,478	10,525	8,399	8,181	3.2%	2.6%	2.6%
Lamar	5,830	5,788	5,705	5,597	5,618	5,552	233	170	153	4.0%	2.9%	2.7%
Lauderdale	43,116	43,533	42,433	41,617	42,382	41,269	1,499	1,151	1,164	3.5%	2.6%	2.7%
Lawrence	14,995	15,050	14,734	14,540	14,699	14,376	455	351	358	3.0%	2.3%	2.4%
Lee	82,157	82,448	78,859	79,704	80,499	76,988	2,453	1,949	1,871	3.0%	2.4%	2.4%
Limestone	50,364	50,487	48,936	49,028	49,399	47,886	1,336	1,088	1,050	2.7%	2.2%	2.1%
Lowndes	3,544	3,567	3,469	3,332	3,380	3,286	212	187	183	6.0%	5.2%	5.3%
Macon	8,005	8,014	7,908	7,681	7,761	7,643	324	253	265	4.0%	3.2%	3.4%
Madison	208,007	208,010	201,829	202,264	203,421	197,600	5,743	4,589	4,229	2.8%	2.2%	2.1%
Marengo	7,619	7,648	7,517	7,311	7,389	7,240	308	259	277	4.0%	3.4%	3.7%
Marion	13,184	13,300	13,931	12,659	12,901	13,442	525	399	489	4.0%	3.0%	3.5%
Marshall	46,288	46,568	45,440	45,051	45,589	44,506	1,237	979	934	2.7%	2.1%	2.1%
Mobile	191,115	191,516	188,040	182,569	184,713	181,853	8,546	6,803	6,187	4.5%	3.6%	3.3%
Monroe	7,089	7,138	6,885	6,682	6,809	6,559	407	329	326	5.7%	4.6%	4.7%
Montgomery	108,226	108,398	106,374	104,336	105,222	103,037	3,890	3,176	3,337	3.6%	2.9%	3.1%
Morgan	61,979	62,143	60,954	60,367	60,846	59,699	1,612	1,297	1,255	2.6%	2.1%	2.1%
Perry	3,014	3,047	2,968	2,808	2,892	2,820	206	155	148	6.8%	5.1%	5.0%
Pickens	7,890	7,992	7,682	7,561	7,728	7,442	329	264	240	4.2%	3.3%	3.1%
Pike	16,229	16,356	15,822	15,659	15,826	15,385	570	530	437	3.5%	3.2%	2.8%
Randolph	9,697	9,719	9,505	9,368	9,470	9,256	329	249	249	3.4%	2.6%	2.6%
Russell	23,819	23,790	23,165	22,847	23,042	22,476	972	748	689	4.1%	3.1%	3.0%
Shelby	122,111	122,895	120,379	119,096	120,534	118,162	3,015	2,361	2,217	2.5%	1.9%	1.8%
St. Clair	42,468	42,758	41,844	41,244	41,775	40,915	1,224	983	929	2.9%	2.3%	2.2%
Sumter	4,559	4,603	4,619	4,334	4,416	4,470	225	187	149	4.9%	4.1%	3.2%
Talladega	36,453	36,762	36,317	35,109	35,718	35,235	1,344	1,044	1,082	3.7%	2.8%	3.0%
Tallapoosa	16,995	17,241	16,856	16,425	16,803	16,359	570	438	497	3.4%	2.5%	2.9%
Tuscaloosa	106,247	107,027	104,005	103,407	104,562	101,571	3,200	2,465	2,434	3.0%	2.3%	2.3%
Walker	25,712	25,824	25,350	24,807	25,133	24,616	905	691	734	3.5%	2.7%	2.9%
Washington	9,112	9,168	9,273	8,772	8,885	9,009	340	283	264	3.7%	3.1%	2.8%
Wilcox	2,564	2,571	2,571	2,296	2,329	2,346	268	242	225	10.5%	9.4%	8.8%
Winston	9,765	9,775	9,720	9,404	9,509	9,445	361	266	275	3.7%	2.7%	2.8%
United States (Seasonally Adjusted)	167,276,000	167,451,000	165,871,000	161,152,000	161,183,000	160,152,000	6,124,000	6,268,000	5,719,000	3.7%	3.7%	3.4%
United States (Not Seasonally Adj.)	166,428,000	166,661,000	165,070,000	159,650,000	160,754,000	158,692,000	6,778,000	5,907,000	6,378,000	4.1%	3.5%	3.9%

Counties and Metropolitan Areas are comparable to the not seasonally adjusted labor force data.

Estimates prepared by the Alabama Department of Labor in cooperation with the Bureau of Labor Statistics, based on a 2023 benchmark.

ALABAMA METROPOLITAN STATISTICAL AREA UNEMPLOYMENT RATES



Estimates prepared by the Alabama Department of Labor in Cooperation with the Bureau of Labor Statistics, based on 2023 benchmark.

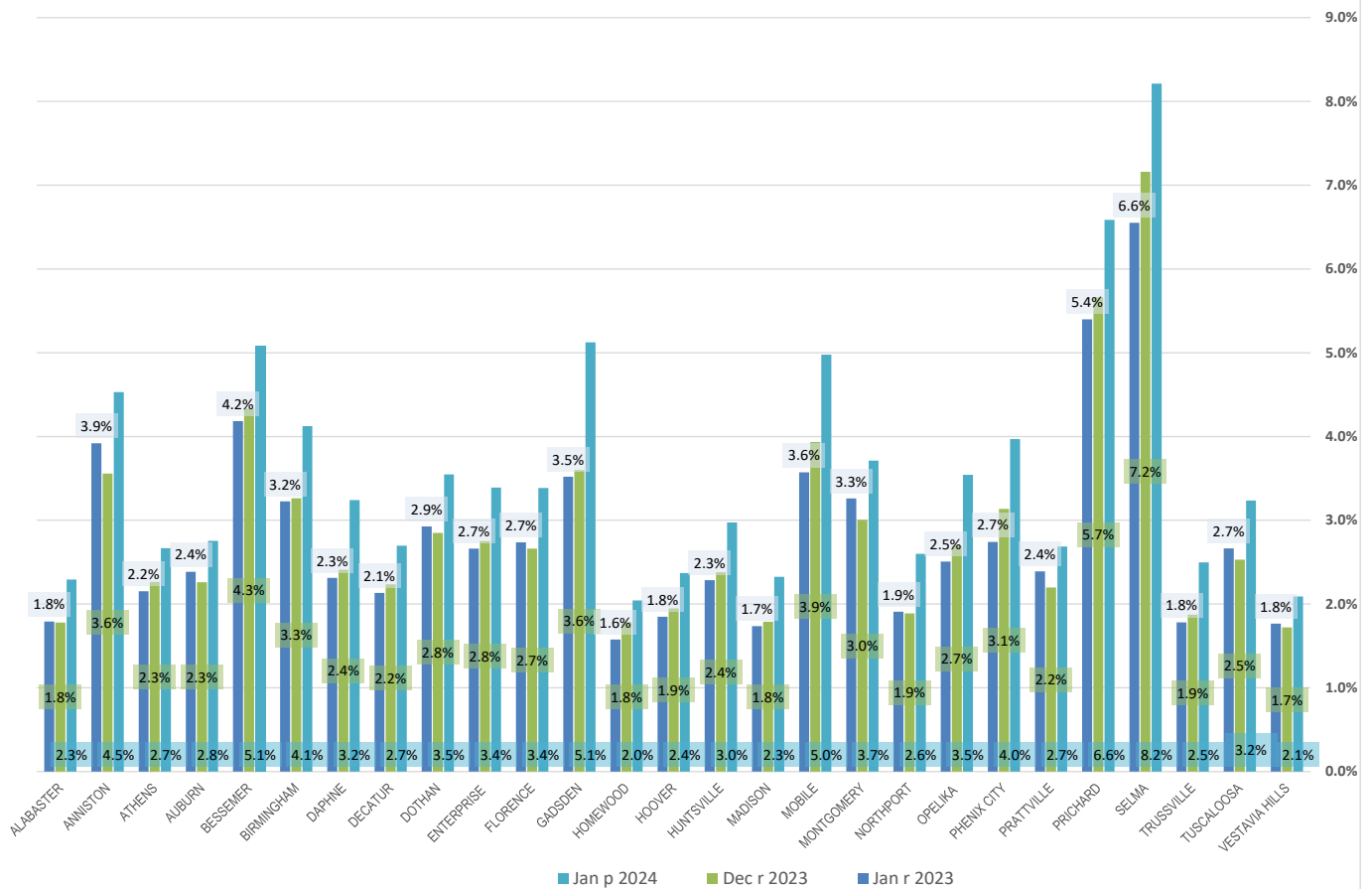
METROPOLITAN STATISTICAL AREAS
CIVILIAN LABOR FORCE DATA

Area	Civilian Labor Force			Employment			Unemployment			Unemployment Rate		
	Jan p 2024	Dec r 2023	Jan r 2023	Jan p 2024	Dec r 2023	Jan r 2023	Jan p 2024	Dec r 2023	Jan r 2023	Jan p 2024	Dec r 2023	Jan r 2023
Anniston-Oxford-Jacksonville MA	45,506	45,544	45,109	43,787	44,199	43,822	1,719	1,345	1,287	3.8%	3.0%	2.9%
Auburn-Opelika MA	82,157	82,448	78,859	79,704	80,499	76,988	2,453	1,949	1,871	3.0%	2.4%	2.4%
Birmingham-Hoover MA	570,816	574,166	562,402	553,519	560,461	549,110	17,297	13,705	13,292	3.0%	2.4%	2.4%
Daphne-Fairhope-Foley MA	103,652	104,572	100,742	100,343	101,958	98,206	3,309	2,614	2,536	3.2%	2.5%	2.5%
Decatur MA	76,974	77,193	75,688	74,907	75,545	74,075	2,067	1,648	1,613	2.7%	2.1%	2.1%
Dothan MA	66,953	67,455	65,536	64,618	65,632	63,715	2,335	1,823	1,821	3.5%	2.7%	2.8%
Florence-Muscle Shoals MA	67,159	67,806	66,076	64,675	65,872	64,124	2,484	1,934	1,952	3.7%	2.9%	3.0%
Gadsden MA	39,380	39,509	38,797	37,857	38,369	37,660	1,523	1,140	1,137	3.9%	2.9%	2.9%
Huntsville MA	258,371	258,497	250,765	251,292	252,820	245,486	7,079	5,677	5,279	2.7%	2.2%	2.1%
Mobile MA	191,115	191,516	188,040	182,569	184,713	181,853	8,546	6,803	6,187	4.5%	3.6%	3.3%
Montgomery MA	177,358	177,753	174,289	171,417	172,936	169,289	5,941	4,817	5,000	3.3%	2.7%	2.9%
Tuscaloosa MA	120,204	121,222	117,614	116,413	118,277	114,715	3,791	2,945	2,899	3.2%	2.4%	2.5%

Counties and Metropolitan Areas are comparable to the not seasonally adjusted labor force data.

Estimates prepared by the Alabama Department of Labor in cooperation with the Bureau of Labor Statistics, based on a 2023 benchmark.

SELECTED CITY UNEMPLOYMENT RATES

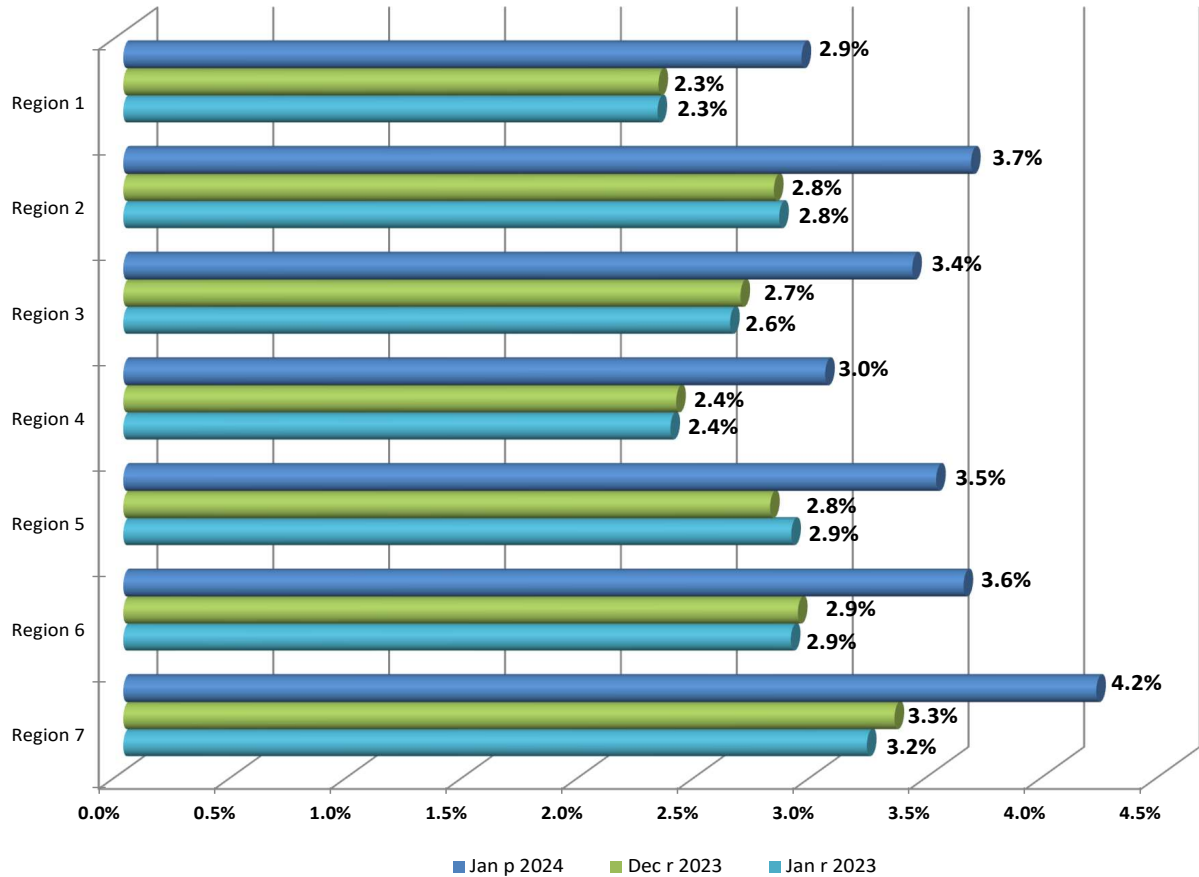
CITY AREAS
CIVILIAN LABOR FORCE DATA

Area	Civilian Labor Force			Employment			Unemployment			Unemployment Rate		
	Jan p 2024	Dec r 2023	Jan r 2023	Jan p 2024	Dec r 2023	Jan r 2023	Jan p 2024	Dec r 2023	Jan r 2023	Jan p 2024	Dec r 2023	Jan r 2023
ALABASTER CITY	19,053	19,182	18,807	18,616	18,841	18,470	437	341	337	2.3%	1.8%	1.8%
ANNISTON CITY	7,904	7,898	7,860	7,546	7,617	7,552	358	281	308	4.5%	3.6%	3.9%
ATHENS CITY	14,253	14,302	13,848	13,873	13,978	13,550	380	324	298	2.7%	2.3%	2.2%
AUBURN CITY	33,730	33,894	32,457	32,801	33,128	31,683	929	766	774	2.8%	2.3%	2.4%
BESSEMER CITY	10,065	10,107	9,893	9,554	9,669	9,479	511	438	414	5.1%	4.3%	4.2%
BIRMINGHAM CITY	94,591	94,875	92,973	90,690	91,778	89,975	3,901	3,097	2,998	4.1%	3.3%	3.2%
DAPHNE CITY	13,426	13,526	13,015	12,991	13,200	12,714	435	326	301	3.2%	2.4%	2.3%
DECATUR CITY	28,851	28,943	28,367	28,073	28,296	27,762	778	647	605	2.7%	2.2%	2.1%
DOTHAN CITY	31,541	31,733	30,917	30,422	30,829	30,012	1,119	904	905	3.5%	2.8%	2.9%
ENTERPRISE CITY	11,416	11,488	11,303	11,029	11,172	11,002	387	316	301	3.4%	2.8%	2.7%
FLORENCE CITY	18,960	19,165	18,676	18,318	18,655	18,165	642	510	511	3.4%	2.7%	2.7%
GADSDEN CITY	12,199	12,168	11,934	11,574	11,730	11,514	625	438	420	5.1%	3.6%	3.5%
HOMERWOOD CITY	14,528	14,663	14,344	14,231	14,401	14,118	297	262	226	2.0%	1.8%	1.6%
HOOVER CITY	47,535	47,899	46,910	46,409	46,966	46,043	1,126	933	867	2.4%	1.9%	1.8%
HUNTSVILLE CITY	110,582	110,541	107,271	107,293	107,909	104,819	3,289	2,632	2,452	3.0%	2.4%	2.3%
MADISON CITY	29,941	29,952	29,075	29,245	29,416	28,570	696	536	505	2.3%	1.8%	1.7%
MOBILE CITY	86,788	86,854	85,188	82,469	83,437	82,145	4,319	3,417	3,043	5.0%	3.9%	3.6%
MONTGOMERY CITY	93,823	93,929	92,220	90,339	91,106	89,214	3,484	2,823	3,006	3.7%	3.0%	3.3%
NORTHPORT CITY	14,086	14,189	13,786	13,720	13,921	13,523	366	268	263	2.6%	1.9%	1.9%
OPELIKA CITY	15,526	15,544	14,838	14,976	15,125	14,466	550	419	372	3.5%	2.7%	2.5%
PHENIX CITY	15,247	15,249	14,770	14,642	14,771	14,365	605	478	405	4.0%	3.1%	2.7%
PRATTVILLE CITY	18,015	18,102	17,736	17,531	17,704	17,312	484	398	424	2.7%	2.2%	2.4%
PRICHARD CITY	7,986	8,000	7,854	7,460	7,547	7,430	526	453	424	6.6%	5.7%	5.4%
SELMA CITY	5,588	5,629	5,465	5,129	5,226	5,107	459	403	358	8.2%	7.2%	6.6%
TRUSSVILLE CITY	12,255	12,323	12,069	11,949	12,092	11,854	306	231	215	2.5%	1.9%	1.8%
TUSCALOOSA CITY	49,075	49,435	48,088	47,487	48,185	46,807	1,588	1,250	1,281	3.2%	2.5%	2.7%
VESTAVIA HILLS CITY	18,561	18,713	18,354	18,173	18,391	18,030	388	322	324	2.1%	1.7%	1.8%

City Areas are comparable to the not seasonally adjusted labor force data.

Estimates prepared by the Alabama Department of Labor in cooperation with the Bureau of Labor Statistics, based on a 2023 benchmark.

Alabama Workforce Regions Unemployment Rates



Areas are comparable to the not seasonally adjusted labor force data.

WORKFORCE REGIONS CIVILIAN LABOR FORCE DATA

Area	Civilian Labor Force			Employment			Unemployment			Unemployment Rate		
	Jan p 2024	Dec r 2023	Jan r 2023	Jan p 2024	Dec r 2023	Jan r 2023	Jan p 2024	Dec r 2023	Jan r 2023	Jan p 2024	Dec r 2023	Jan r 2023
Region 1	580,236	582,665	568,644	563,255	569,210	555,537	16,981	13,455	13,107	2.9%	2.3%	2.3%
Region 2	155,271	155,882	153,491	149,591	151,506	149,147	5,680	4,376	4,344	3.7%	2.8%	2.8%
Region 3	156,423	157,568	153,428	151,098	153,372	149,411	5,325	4,196	4,017	3.4%	2.7%	2.6%
Region 4	562,039	565,327	553,753	545,018	551,840	540,681	17,021	13,487	13,072	3.0%	2.4%	2.4%
Region 5	350,558	351,761	342,130	338,263	341,944	332,269	12,295	9,817	9,861	3.5%	2.8%	2.9%
Region 6	164,098	165,317	161,662	158,148	160,505	157,006	5,950	4,812	4,656	3.6%	2.9%	2.9%
Region 7	344,320	345,859	337,788	329,860	334,350	326,950	14,460	11,509	10,838	4.2%	3.3%	3.2%

Areas are comparable to the not seasonally adjusted labor force data.

Estimates prepared by the Alabama Department of Labor in cooperation with the Bureau of Labor Statistics, based on a 2023 benchmark.

For information about the Workforce Region geography, please visit <http://www2.labor.alabama.gov/Information/WorkforceRegionsMap.pdf>.

Alabama Counties Ranked in Descending Order

Current January 2024

2023 Annual Average

Rank	Area	Rate
1	Wilcox County, AL	10.5%
2	Greene County, AL	7.3%
3	Clarke County, AL	7.1%
4	Dallas County, AL	6.8%
4	Perry County, AL	6.8%
6	Lowndes County, AL	6.0%
7	Monroe County, AL	5.7%
8	Barbour County, AL	5.4%
9	Choctaw County, AL	5.1%
10	Sumter County, AL	4.9%
11	Mobile County, AL	4.5%
12	Conecuh County, AL	4.4%
13	Escambia County, AL	4.3%
13	Fayette County, AL	4.3%
13	Hale County, AL	4.3%
16	Pickens County, AL	4.2%
17	Colbert County, AL	4.1%
17	Russell County, AL	4.1%
19	Lamar County, AL	4.0%
19	Macon County, AL	4.0%
19	Marengo County, AL	4.0%
19	Marion County, AL	4.0%
23	Butler County, AL	3.9%
23	Covington County, AL	3.9%
23	Etowah County, AL	3.9%
26	Calhoun County, AL	3.8%
26	Coosa County, AL	3.8%
28	Talladega County, AL	3.7%
28	Washington County, AL	3.7%
28	Winston County, AL	3.7%
31	Chambers County, AL	3.6%
31	Dale County, AL	3.6%
31	Houston County, AL	3.6%
31	Montgomery County, AL	3.6%
35	Crenshaw County, AL	3.5%
35	Lauderdale County, AL	3.5%
35	Pike County, AL	3.5%
35	Walker County, AL	3.5%
39	Henry County, AL	3.4%
39	Jackson County, AL	3.4%
39	Randolph County, AL	3.4%
39	Tallapoosa County, AL	3.4%
43	Cherokee County, AL	3.3%
43	Coffee County, AL	3.3%
45	Baldwin County, AL	3.2%
45	Geneva County, AL	3.2%
45	Jefferson County, AL	3.2%
48	Bibb County, AL	3.1%
49	Blount County, AL	3.0%
49	Bullock County, AL	3.0%
49	Clay County, AL	3.0%
49	Cleburne County, AL	3.0%
49	DeKalb County, AL	3.0%
49	Franklin County, AL	3.0%
49	Lawrence County, AL	3.0%
49	Lee County, AL	3.0%
49	Tuscaloosa County, AL	3.0%
58	St. Clair County, AL	2.9%
59	Chilton County, AL	2.8%
59	Elmore County, AL	2.8%
59	Madison County, AL	2.8%
62	Autauga County, AL	2.7%
62	Cullman County, AL	2.7%
62	Limestone County, AL	2.7%
62	Marshall County, AL	2.7%
66	Morgan County, AL	2.6%
67	Shelby County, AL	2.5%

Rank	Area	Rate
1	Wilcox County, AL	8.0%
2	Dallas County, AL	5.4%
3	Clarke County, AL	5.0%
3	Perry County, AL	5.0%
5	Greene County, AL	4.8%
6	Lowndes County, AL	4.6%
7	Barbour County, AL	4.4%
8	Monroe County, AL	4.3%
9	Choctaw County, AL	4.0%
10	Sumter County, AL	3.7%
11	Conecuh County, AL	3.5%
12	Hale County, AL	3.3%
12	Marengo County, AL	3.3%
14	Macon County, AL	3.2%
15	Escambia County, AL	3.1%
15	Mobile County, AL	3.1%
17	Pickens County, AL	3.0%
18	Butler County, AL	2.9%
18	Colbert County, AL	2.9%
18	Fayette County, AL	2.9%
18	Marion County, AL	2.9%
22	Calhoun County, AL	2.8%
22	Etowah County, AL	2.8%
22	Lamar County, AL	2.8%
22	Montgomery County, AL	2.8%
22	Russell County, AL	2.8%
22	Talladega County, AL	2.8%
28	Covington County, AL	2.7%
28	Crenshaw County, AL	2.7%
28	Pike County, AL	2.7%
28	Winston County, AL	2.7%
32	Coosa County, AL	2.6%
32	Franklin County, AL	2.6%
32	Henry County, AL	2.6%
32	Houston County, AL	2.6%
32	Walker County, AL	2.6%
32	Washington County, AL	2.6%
38	Bibb County, AL	2.5%
38	Coffee County, AL	2.5%
38	Dale County, AL	2.5%
38	Jackson County, AL	2.5%
38	Jefferson County, AL	2.5%
38	Lauderdale County, AL	2.5%
38	Tallapoosa County, AL	2.5%
45	Bullock County, AL	2.4%
45	Chambers County, AL	2.4%
45	Cherokee County, AL	2.4%
45	Clay County, AL	2.4%
45	Geneva County, AL	2.4%
45	Randolph County, AL	2.4%
51	Baldwin County, AL	2.3%
51	Cleburne County, AL	2.3%
51	DeKalb County, AL	2.3%
51	Lawrence County, AL	2.3%
51	Lee County, AL	2.3%
51	Tuscaloosa County, AL	2.3%
57	Autauga County, AL	2.2%
57	Chilton County, AL	2.2%
59	Blount County, AL	2.1%
59	Elmore County, AL	2.1%
59	Limestone County, AL	2.1%
59	Marshall County, AL	2.1%
59	St. Clair County, AL	2.1%
64	Cullman County, AL	2.0%
64	Madison County, AL	2.0%
64	Morgan County, AL	2.0%
67	Shelby County, AL	1.8%

Release Schedule

Local Area Unemployment Statistics & Current Employment Statistics 2024 Publication Schedule	
Reference Month	Publication Date
January	Monday, 3/11/2024, 8:00AM
February	Friday, 3/22/2024, 8:00AM
March	Friday, 4/19/2024, 8:00AM
April	Friday, 5/17/2024, 8:00AM
May	Friday, 6/21/2024, 8:00AM <i>Southeastern States Map available Tuesday, 6/25/2024</i>
June	Friday, 7/19/2024, 8:00AM
July	Friday, 8/16/2024, 8:00AM
August	Friday, 9/20/2024, 8:00AM
September	Friday, 10/18/2024, 8:00AM <i>Southeastern States Map available Tuesday, 10/22/2024</i>
October	Friday, 11/15/2024, 8:00AM <i>Southeastern States Map available Tuesday, 11/19/2024</i>
November	Friday, 12/20/2024, 8:00AM
December	Friday, 1/24/2025, 8:00AM <i>Southeastern States Map available Tuesday, 1/28/2025</i>



Technical Support

Local Area Unemployment Statistics
Labor Market Information Division
Alabama Department of Labor
649 Monroe St, Room 4427
Montgomery, AL 36131-2280

334-956-7485 phone/fax

<http://www2.labor.alabama.gov/Laus/Default.aspx> website

An Equal Opportunity Employer / Program
Auxiliary aids and services available upon request to individuals with disabilities.
Dial 711 for TTY accessibility.